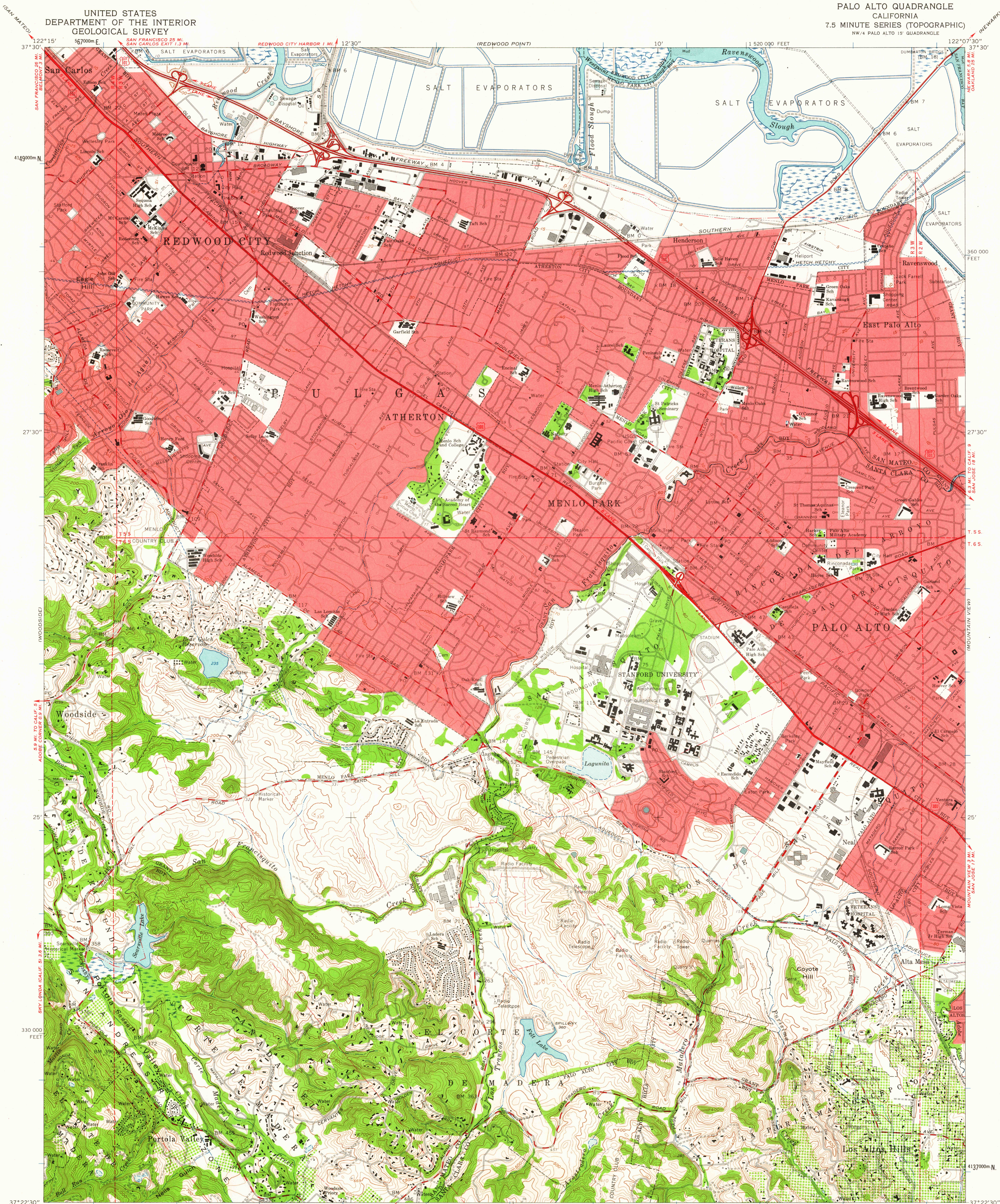


UNITED STATES
DEPARTMENT OF THE INTERIOR
GEOLOGICAL SURVEY

PALO ALTO QUADRANGLE
CALIFORNIA
7.5 MINUTE SERIES (TOPOGRAPHIC)
NW 1/4 PALO ALTO 15' QUADRANGLE



Mapped, edited, and published by the Geological Survey
with cooperation by the California Department of Water Resources
Control by USGS, USC&GS, and USCE
Topography from aerial photographs by photogrammetric methods
and by planetable surveys 1953. Aerial photographs taken 1948.
Revised from aerial photographs taken 1960. Field checked 1961
Polyconic projection. 1927 North American datum
10,000-foot grid based on California coordinate system, zone 3
1000-meter Universal Transverse Mercator grid ticks,
zone 10, shown in blue
Red tint indicates area in which only landmark buildings are shown
Dashed land lines indicate approximate locations
Fine red dashed lines indicate selected fence lines
A portion of this map lies within a subsidence area

SCALE 1:24,000
1 000 0 1000 2000 3000 4000 5000 6000 7000 FEET
1 5 0 5 1 KILOMETER
CONTOUR INTERVAL 20 FEET
DOTTED LINES REPRESENT 5-FOOT CONTOURS
DATUM IS MEAN SEA LEVEL
SHORELINE SHOWN REPRESENTS THE APPROXIMATE LINE OF MEAN HIGH WATER
THE MEAN RANGE OF TIDE IS APPROXIMATELY 7 FEET
THIS MAP COMPLIES WITH NATIONAL MAP ACCURACY STANDARDS
FOR SALE BY U.S. GEOLOGICAL SURVEY, DENVER 25, COLORADO OR WASHINGTON 25, D. C.
A FOLDER DESCRIBING TOPOGRAPHIC MAPS AND SYMBOLS IS AVAILABLE ON REQUEST

USGS
Historical File
Topographic Division

ROAD CLASSIFICATION
Heavy-duty ——— Light-duty ———
Medium-duty ——— Unimproved dirt ———
U.S. Route



PALO ALTO, CALIF.
NW 1/4 PALO ALTO 15' QUADRANGLE
N3722.5 - W12207.5/7.5
1961

AUG - 9 1962

4055