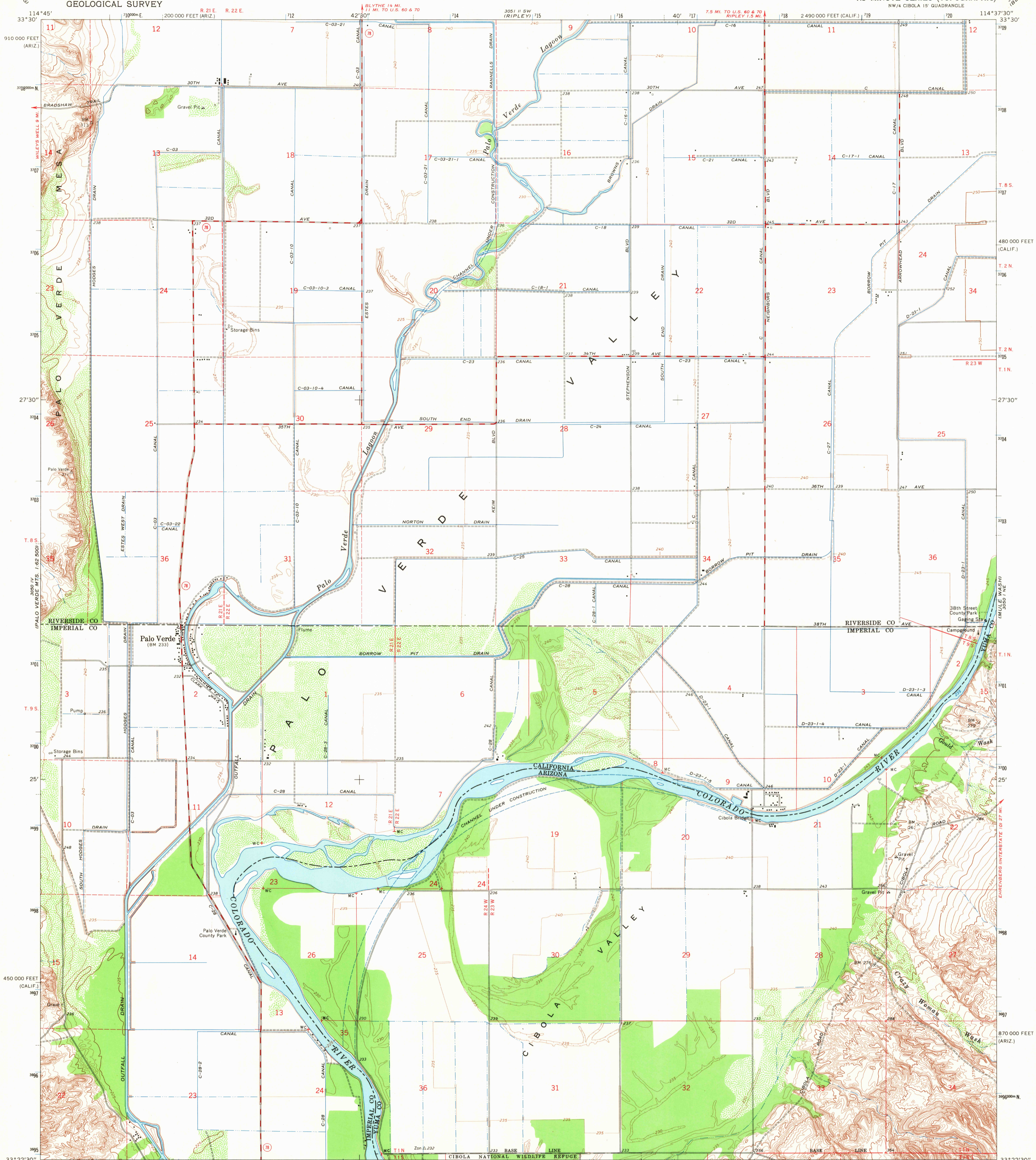
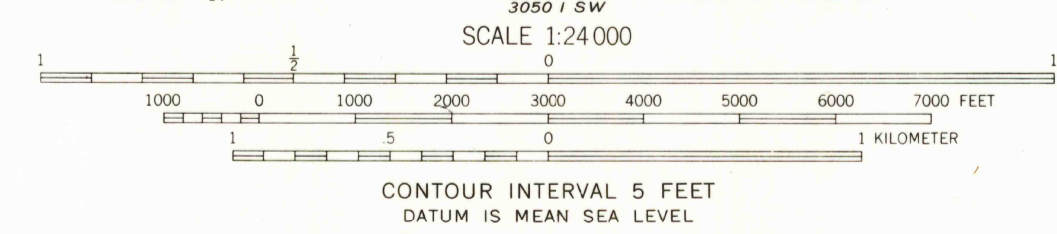
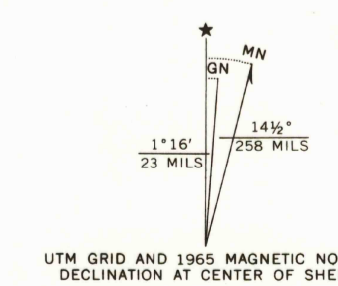


UNITED STATES  
DEPARTMENT OF THE INTERIOR  
GEOLOGICAL SURVEY

PALO VERDE QUADRANGLE  
CALIFORNIA-ARIZONA  
7.5 MINUTE SERIES (TOPOGRAPHIC)  
NW/4 CIBOLA 15' QUADRANGLE



Mapped, edited, and published by the Geological Survey in cooperation with the State of California  
Control by USGS and USC&GS  
Planimetry by photogrammetric methods from aerial photographs taken 1948. Revised from aerial photographs taken 1961  
Topography by planetable surveys 1952. Revised 1965  
Polyconic projection. 1927 North American datum  
10,000-foot grids based on California coordinate system, zone 6, and Arizona coordinate system, west zone  
1000-meter Universal Transverse Mercator grid ticks, zone 11, shown in blue



USGS  
Historical Topographic Division

ROAD CLASSIFICATION  
Medium-duty — Light-duty  
Unimproved dirt — State Route

THIS MAP COMPLIES WITH NATIONAL MAP ACCURACY STANDARDS  
FOR SALE BY U.S. GEOLOGICAL SURVEY, DENVER, COLORADO 80225, OR WASHINGTON, D.C. 20242  
A FOLDER DESCRIBING TOPOGRAPHIC MAPS AND SYMBOLS IS AVAILABLE ON REQUEST

U.S.G.S. PALO VERDE, CALIF.-ARIZ.  
NW/4 CIBOLA 15' QUADRANGLE  
N3322.5-W11437.5/7.5  
1965  
AMS 3650 1 NW-SERIES V895