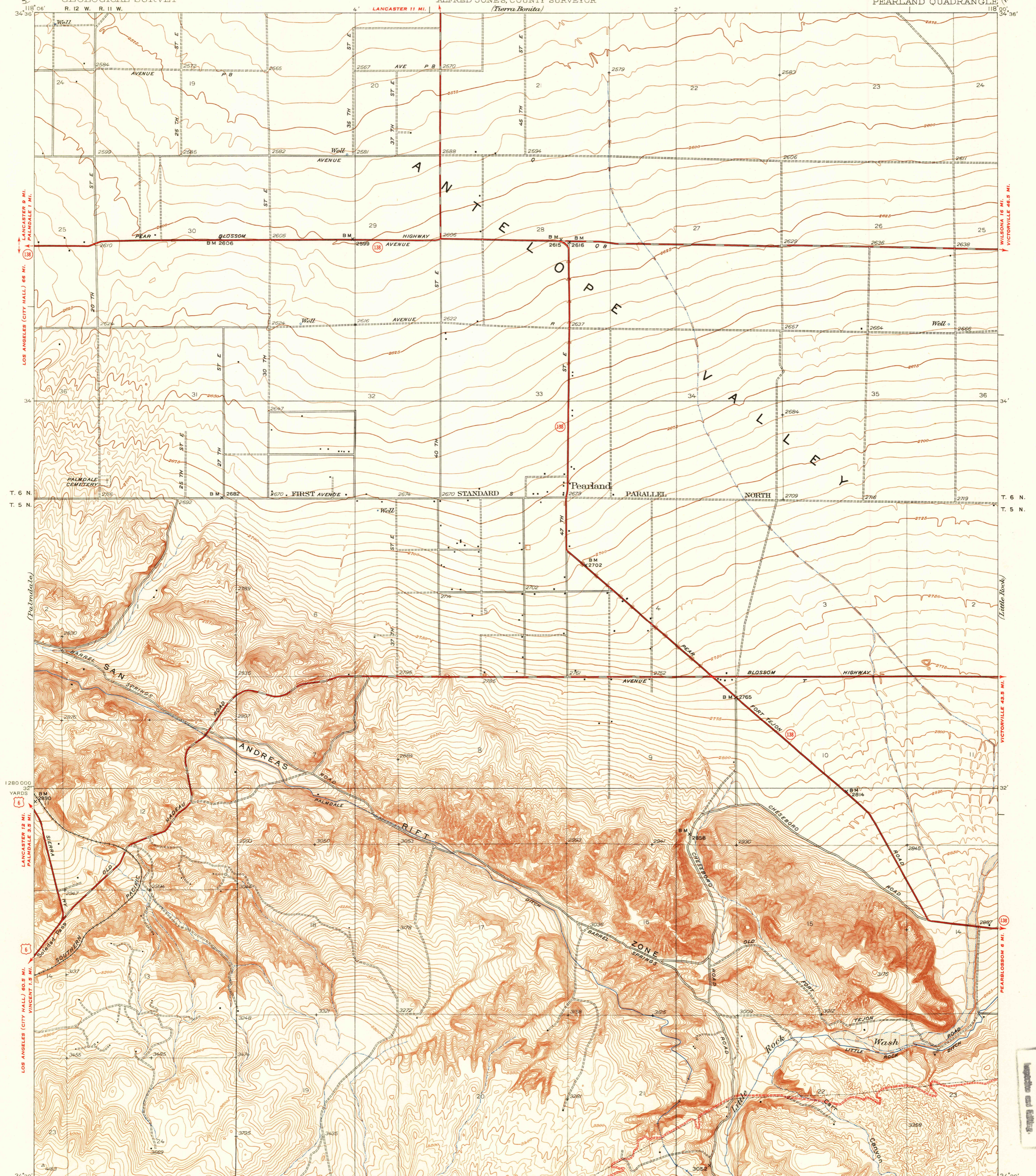


U.S.G.S. FILE COPY Inspection and Editing

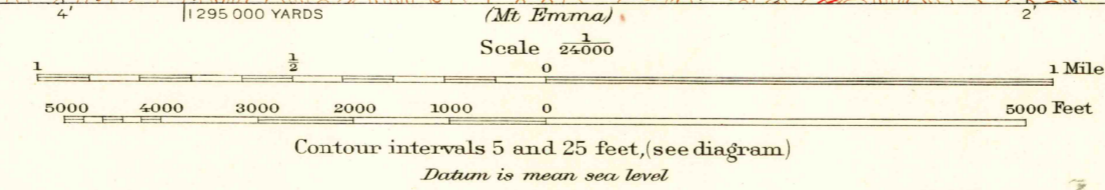
UNITED STATES DEPARTMENT OF THE INTERIOR GEOLOGICAL SURVEY

LOS ANGELES COUNTY CALIFORNIA BOARD OF SUPERVISORS ROGER W. JESSUP, CHAIRMAN ALFRED JONES, COUNTY SURVEYOR (Tierra Bonita)

CALIFORNIA (LOS ANGELES COUNTY) PEARLAND QUADRANGLE



Topography by C.W.H. Nessler, Surveyed in 1930, Culture revised in 1941 by Los Angeles County (T.H. Moncure)



Polyconic projection, North American datum, 5000 yard grid based upon U.S. zone system, 6

USGS Historical File Topographic Division

PEARLAND, CALIF. Edition of 1934, reprinted 1943, N9400-11800/6

JAN 26 1954 1105