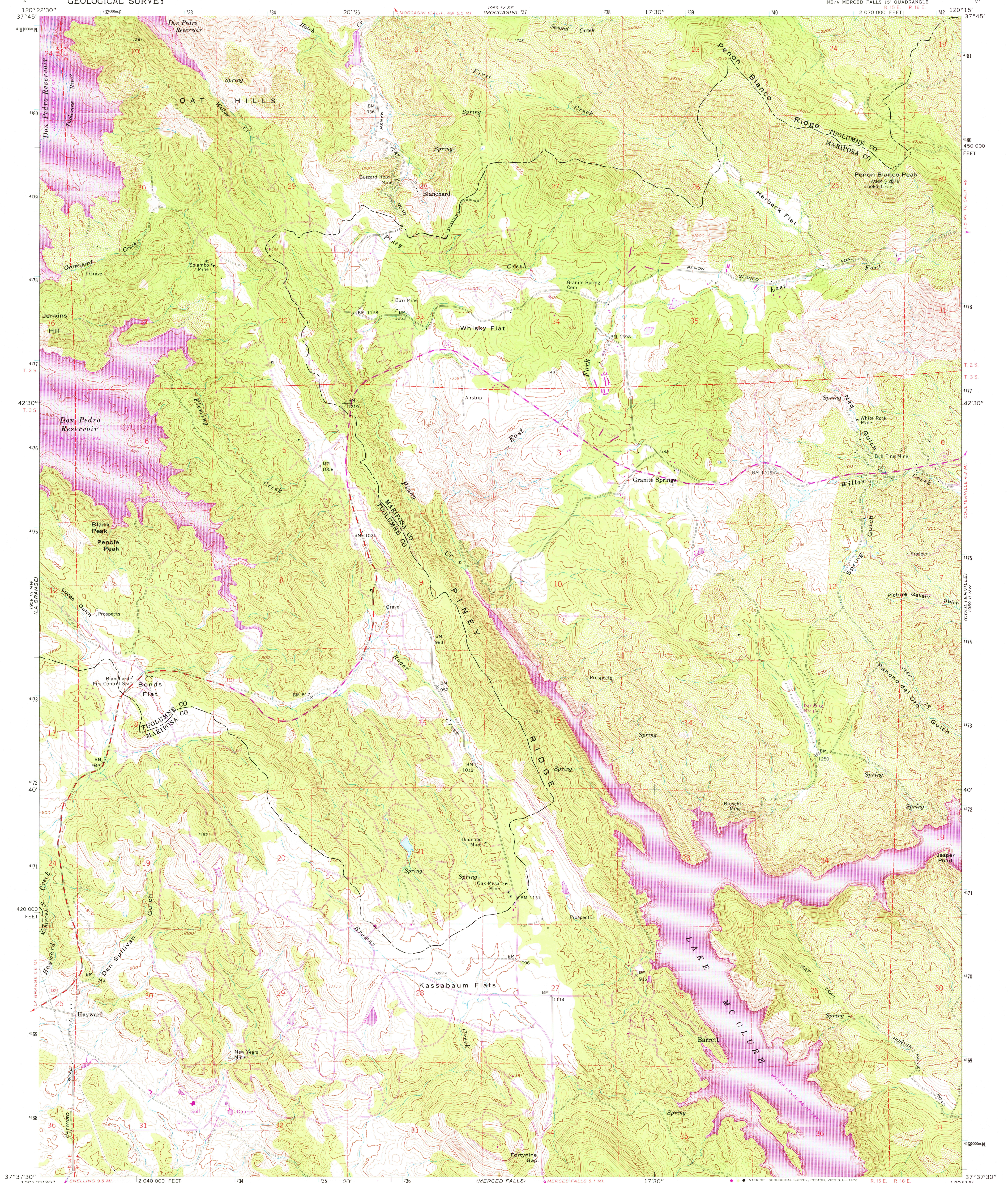
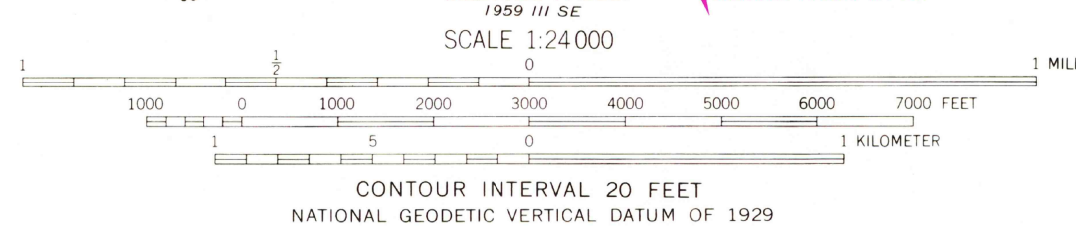
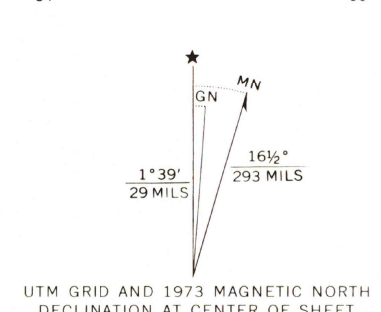


UNITED STATES
DEPARTMENT OF THE INTERIOR
GEOLOGICAL SURVEY

PENON BLANCO PEAK QUADRANGLE
CALIFORNIA
7.5 MINUTE SERIES (TOPOGRAPHIC)



Mapped, edited, and published by the Geological Survey in cooperation with California Department of Water Resources Control by USGS and USC&GS
Topography by photogrammetric methods from aerial photographs taken 1959. Field checked 1962
Underwater contours by Turlock Irrigation District
Polyconic projection. 1927 North American datum
10,000-foot grid based on California coordinate system, zone 3
1000-meter Universal Transverse Mercator grid ticks, zone 10, shown in blue
Fine red dashed lines indicate selected fence lines
Revisions shown in purple compiled from aerial photographs taken 1973. This information not field checked



ROAD CLASSIFICATION
Medium-duty ——— Light-duty ———
Unimproved dirt ———
State Route ———

PENON BLANCO PEAK, CALIF.
NE/4 MERCER FALLS 15' QUADRANGLE
N3737.5—W12015.7/5

USGS
Historical File
Topographic Division

1962
PHOTOREVISED 1973
AMS 1959 III NE—SERIES V895

NOV 23 1976