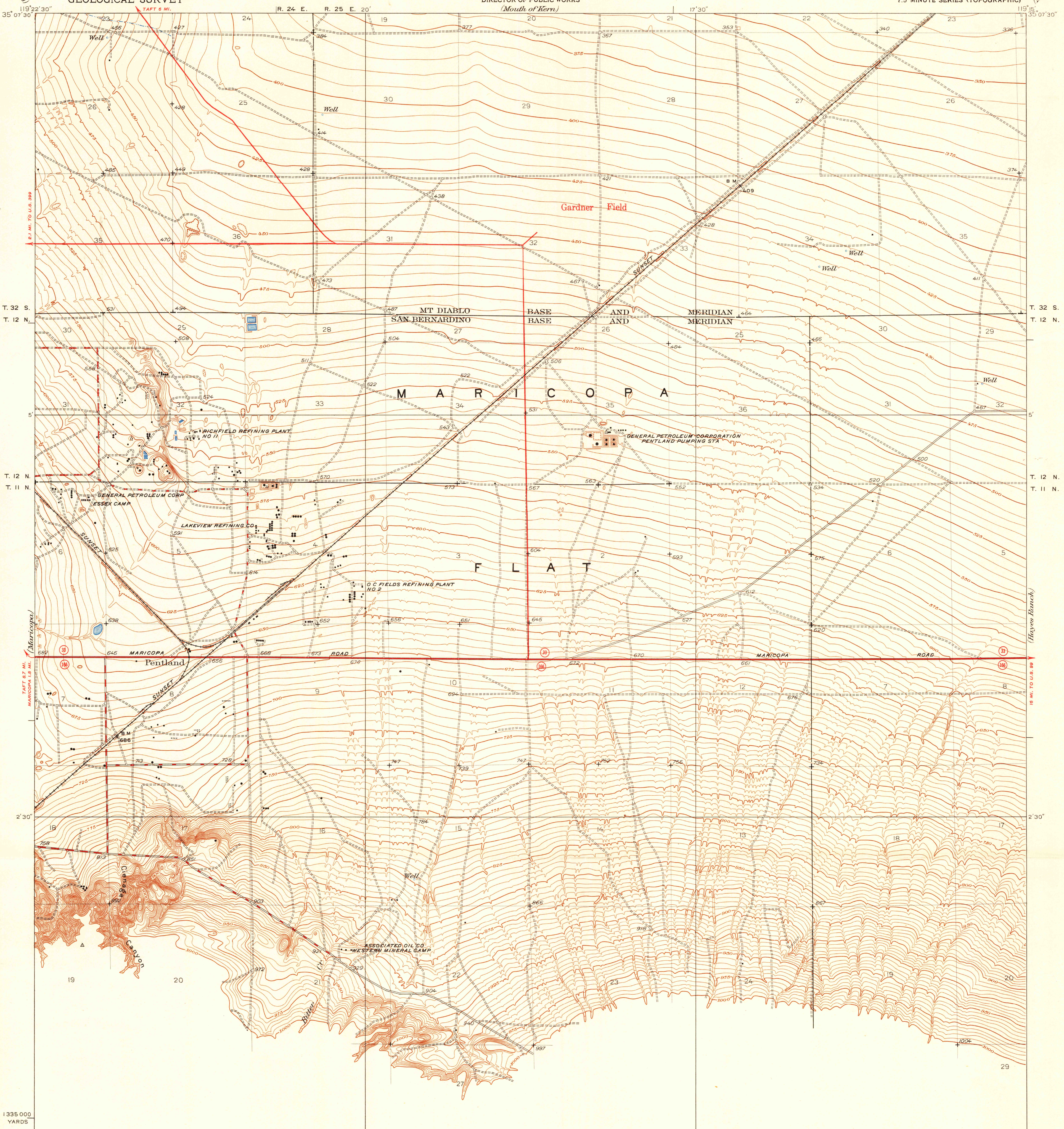


U. S. G. S.
FILE COPY
Inspection and Mapping.

UNITED STATES
DEPARTMENT OF THE INTERIOR
GEOLOGICAL SURVEY

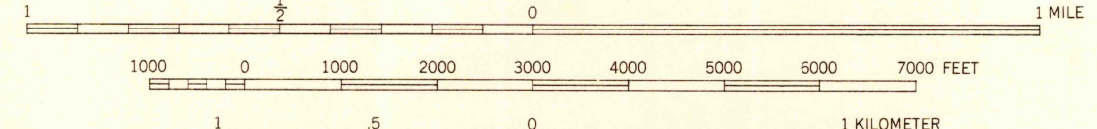
STATE OF CALIFORNIA
REPRESENTED BY THE
DIRECTOR OF PUBLIC WORKS
(Mouth of Kern)

PENTLAND QUADRANGLE
CALIFORNIA
(KERN COUNTY)
7.5 MINUTE SERIES (TOPOGRAPHIC)



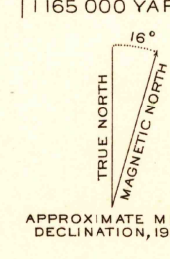
THIS AREA IS SHOWN ON THE MAP OF BUENA VISTA LAKE
QUADRANGLE, SURVEYED IN 1907-1910, SCALE 1:125,000

(Santiago Creek)
SCALE 1:24,000



Topography by H.L. McDonald, S.C. Kain,
and F.H. Purdy
Control by U.S. Geological Survey
Surveyed in 1930-1931

ROAD CLASSIFICATION
HARD-SURFACE ALL WEATHER ROADS DRY WEATHER ROADS
Heavy-duty ———— 4 LANE LANE Improved dirt ————
Medium-duty ———— 4 LANE LANE Unimproved dirt ————
Loose-surface, graded, or narrow hard-surface - - - - -
U. S. Route State Route



CONTOUR INTERVAL 5 FEET
DATUM IS MEAN SEA LEVEL

FOR SALE BY U. S. GEOLOGICAL SURVEY, FEDERAL CENTER, DENVER, COLORADO, OR WASHINGTON 25, D. C.
A FOLDER DESCRIBING TOPOGRAPHIC MAPS AND SYMBOLS IS AVAILABLE ON REQUEST

R. 23 W. R. 22 W.
USGS
Historical File
Topographic Division

INTERIOR-GEOLOGICAL SURVEY, WASHINGTON, D. C.
Polyconic projection, 1927 North American datum
5000 yard grid based upon U.S. zone system, G

U. S. G. S.
FILE COPY
Inspection and Mapping.

PENTLAND, CALIF.
Edition of 1950

First published in 1934
at scale of 1:31680
N 3500-W11915/7.5