

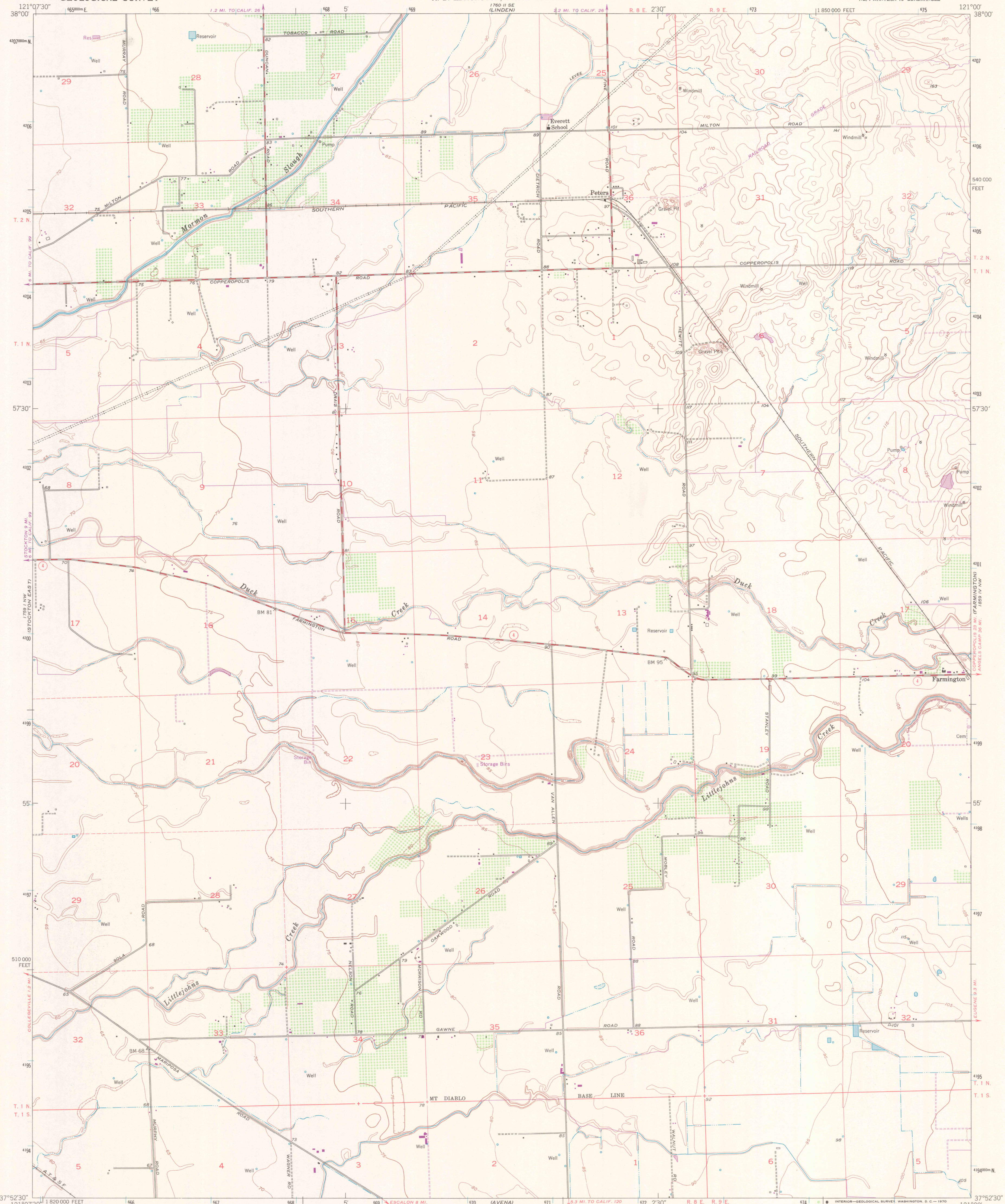
1790 1/2 MI. SW WATERLOO

UNITED STATES DEPARTMENT OF THE INTERIOR GEOLOGICAL SURVEY

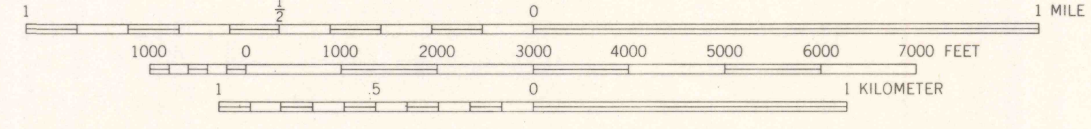
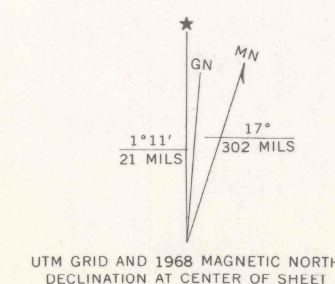
STATE OF CALIFORNIA EARL WARREN, GOVERNOR FRANK B. DURKEE, DIRECTOR OF PUBLIC WORKS A. D. EDMONSTON, STATE ENGINEER

PETERS QUADRANGLE CALIFORNIA—SAN JOAQUIN CO. 7.5 MINUTE SERIES (TOPOGRAPHIC) NE/4 MANTECA 15' QUADRANGLE

1890 1/2 MI. SW VALLEY SPRINGS SW



Mapped, edited, and published by the Geological Survey Control by USGS and USC&GS Mapped 1912, remapped 1952 Culture and drainage by multiplex methods from aerial photographs taken 1949 Topography by plane-table surveys 1952 Polyconic projection. 1927 North American datum 10,000-foot grid based on California coordinate system, zone 3 1000-meter Universal Transverse Mercator grid ticks, zone 10, shown in blue Data shown in purple compiled from aerial photographs taken 1968. This information not field checked



CONTOUR INTERVAL 5 FEET DATUM IS MEAN SEA LEVEL



ROAD CLASSIFICATION Medium-duty Light-duty Unimproved dirt State Route

THIS MAP COMPLIES WITH NATIONAL MAP ACCURACY STANDARDS FOR SALE BY U. S. GEOLOGICAL SURVEY, DENVER, COLORADO 80225, OR WASHINGTON, D. C. 20242 A FOLDER DESCRIBING TOPOGRAPHIC MAPS AND SYMBOLS IS AVAILABLE ON REQUEST

PETERS, CALIF. NE/4 MANTECA 15' QUADRANGLE N3752.5-W12100/7.5 1952 PHOTOREVISED 1968 AMS 1759 I NE—SERIES V895

FILE COPY NOV 2 1970 MAP INFORMATION OFFICE GEOLOGICAL SURVEY