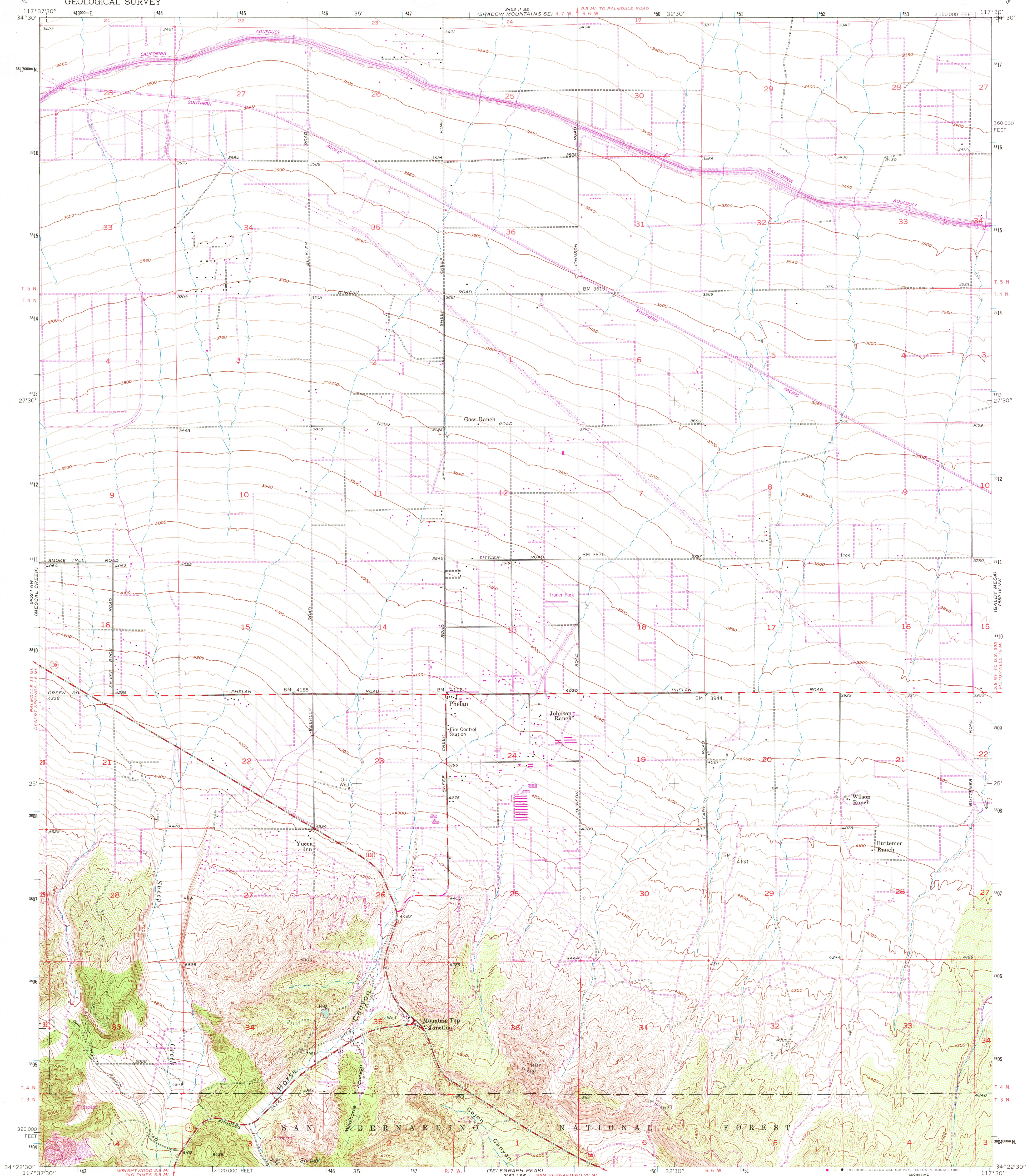


UNITED STATES  
DEPARTMENT OF THE INTERIOR  
GEOLOGICAL SURVEY

PHELAN QUADRANGLE  
CALIFORNIA—SAN BERNARDINO CO.  
7.5 MINUTE SERIES (TOPOGRAPHIC)



Mapped, edited, and published by the Geological Survey  
Control by USGS and USC&GS  
Topography from aerial photographs by Kelsh plotter  
Aerial photographs taken 1952. Field check 1956  
Polyconic projection  
10,000-foot grid based on California coordinate system, zone 5  
1000-meter Universal Transverse Mercator grid ticks,  
zone 11, shown in blue. 1927 North American Datum  
To place on the predicted North American Datum 1983  
move the projection lines 3 meters north and  
83 meters east as shown by dashed corner ticks  
Dashed land lines indicate approximate locations  
There may be private inholdings within the boundaries  
of the National or State reservations shown on this map

Revisions shown in purple and woodland compiled from  
aerial photographs taken 1978 and other source data  
This information not field checked. Map edited 1980

THIS MAP COMPLIES WITH NATIONAL MAP ACCURACY STANDARDS  
FOR SALE BY U. S. GEOLOGICAL SURVEY, DENVER, COLORADO 80225, OR RESTON, VIRGINIA 22092  
A FOLDER DESCRIBING TOPOGRAPHIC MAPS AND SYMBOLS IS AVAILABLE ON REQUEST

USGS  
Historical File  
Topographic Division

PHELAN, CALIF.  
N3422.5—W11730/7.5  
1956  
PHOTOREVISED 1980  
DMA 2452 1 NE—SERIES V895

DEC 22 1980  
2950