

2157 IV NW  
(HUGHES CREEK  
STATION)

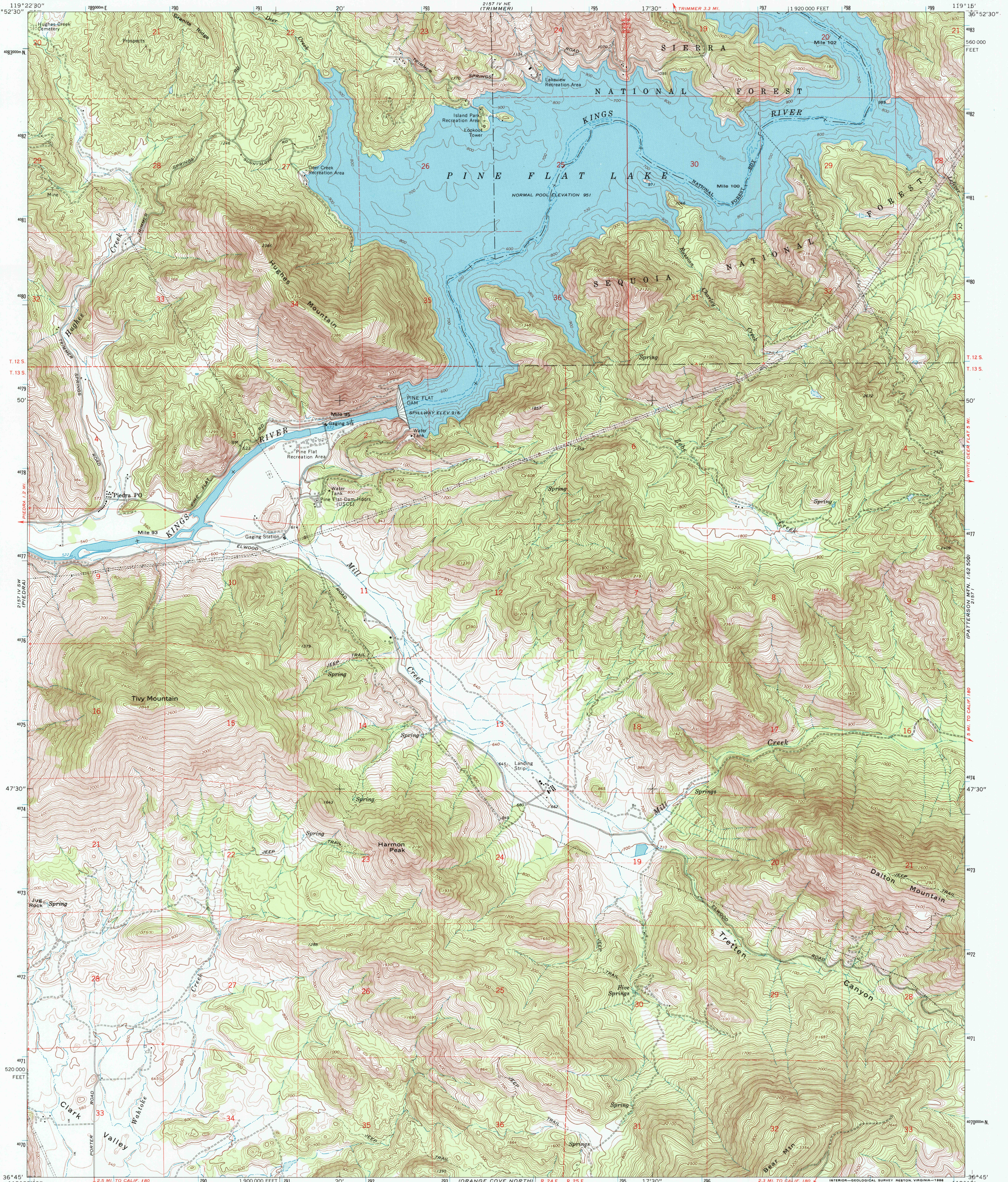


U.S. DEPARTMENT OF THE INTERIOR  
U.S. GEOLOGICAL SURVEY

STATE OF CALIFORNIA  
DEPARTMENT OF WATER RESOURCES

PINE FLAT DAM QUADRANGLE  
CALIFORNIA-FRESNO CO.  
7.5 MINUTE SERIES (TOPOGRAPHIC)

2157 IV SE  
(PATTERSON MTN.)  
162 000



Mapped, edited, and published by the Geological Survey

Control by USGS and USC&GS

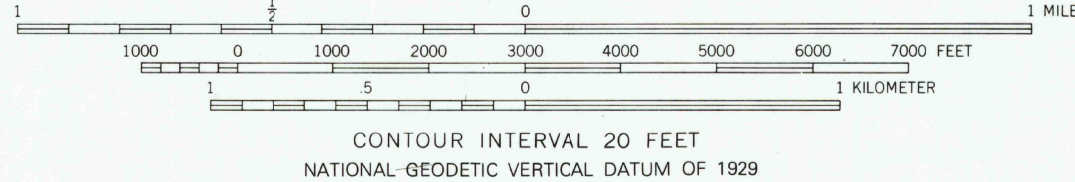
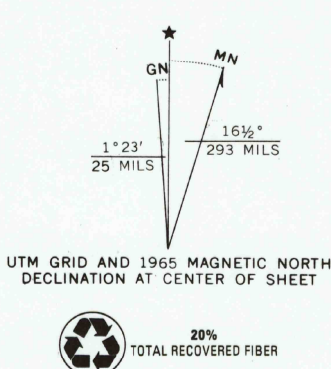
Topography by photogrammetric methods from aerial  
photographs taken 1963. Field checked 1965

100-foot underwater contours from aerial photographs  
taken 1948, prior to inundation

Polyconic projection. 1927 North American datum  
10,000-foot grid based on California coordinate system, zone 4  
1000-meter Universal Transverse Mercator grid ticks,  
zone 11, shown in blue

To place on the predicted North American Datum, 1983  
move the projection lines 9 meters north and  
86 meters east as shown by dashed corner ticks

Where omitted, land lines have not been established  
There may be private inholdings within the boundaries of  
the National or State reservations shown on this map



THIS MAP COMPLIES WITH MAP ACCURACY STANDARDS  
FOR SALE BY U.S. GEOLOGICAL SURVEY  
P.O. BOX 25286, DENVER, COLORADO 80225  
A FOLDER DESCRIBING TOPOGRAPHIC MAPS AND SYMBOLS IS AVAILABLE ON REQUEST



Map photoinspected 1978  
No major culture or drainage changes observed

ROAD CLASSIFICATION  
Light-duty ..... Unimproved dirt =

PINE FLAT DAM, CALIF.  
36119-G3-TF-024  
PHOTOINSPECTED 1978  
1965

DMA 2157 IV SE-SERIES V895

