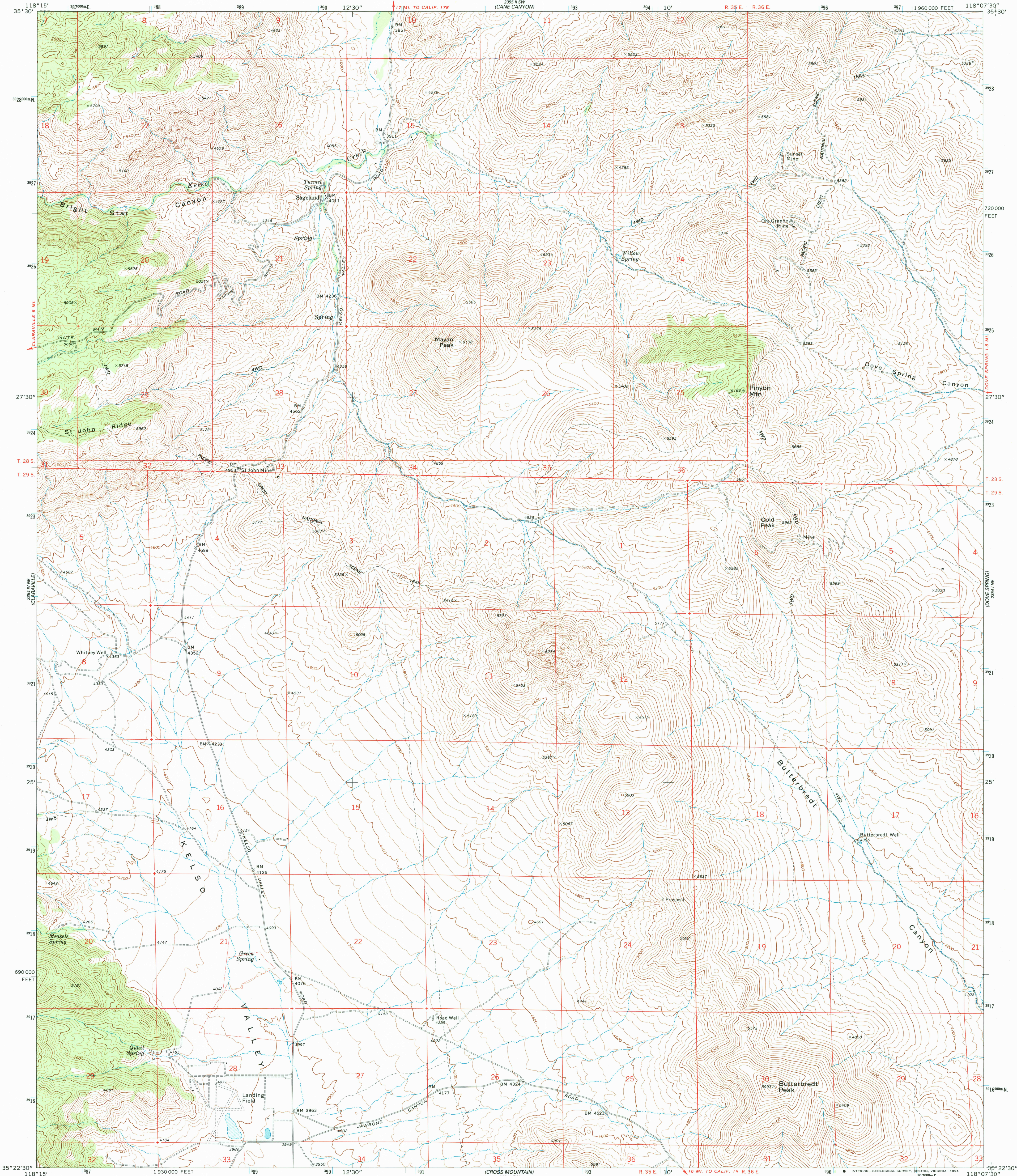
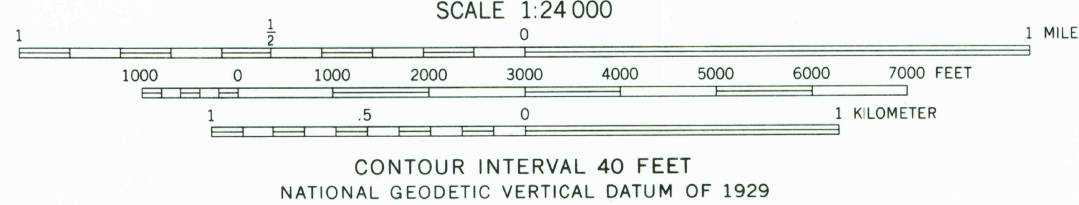
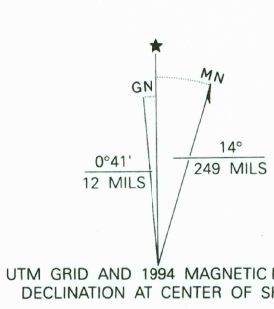


UNITED STATES
DEPARTMENT OF THE INTERIOR
GEOLOGICAL SURVEY

PINYON MTN. QUADRANGLE
CALIFORNIA-KERN CO.
7.5 MINUTE SERIES (TOPOGRAPHIC)



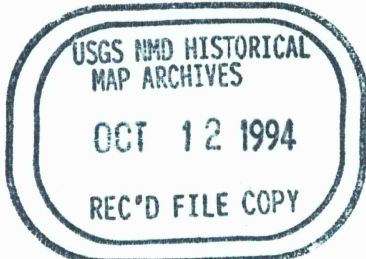
Produced by the United States Geological Survey
Control by USGS and NOS/NOAA
Compiled from aerial photographs taken 1971. Field checked 1972
North American Datum of 1927 (NAD 27). Projection and
10,000-foot ticks: California Coordinate System, zone 5
(Lambert Conformal Conic)
Blue 1000-meter Universal Transverse Mercator ticks, zone 11
North American Datum of 1983 (NAD 83) is shown by dashed
corner ticks. The values of the shift between NAD 27 and NAD 83
for 7.5-minute intersections are obtainable from National Geodetic
Survey NADCON software
Fine red dashed lines indicate selected fence lines
Certain land lines are omitted because of insufficient data
Photinspected from 1989 source; no major culture
or drainage changes observed. Names revised 1994



THIS MAP COMPLIES WITH NATIONAL MAP ACCURACY STANDARDS
FOR SALE BY U. S. GEOLOGICAL SURVEY, DENVER, COLORADO 80225, OR RESTON, VIRGINIA 22092
A FOLDER DESCRIBING TOPOGRAPHIC MAPS AND SYMBOLS IS AVAILABLE ON REQUEST



ROAD CLASSIFICATION
Primary highway, hard surface
Secondary highway, hard surface
Interstate Route
U. S. Route
State Route
Light-duty road, hard or improved surface
Unimproved road
Interstate Route
U. S. Route
State Route



PINYON MTN., CA
35118-D2-TF-024
1972
MINOR REVISION 1994
DMA 2354 1 NW SERIES V895