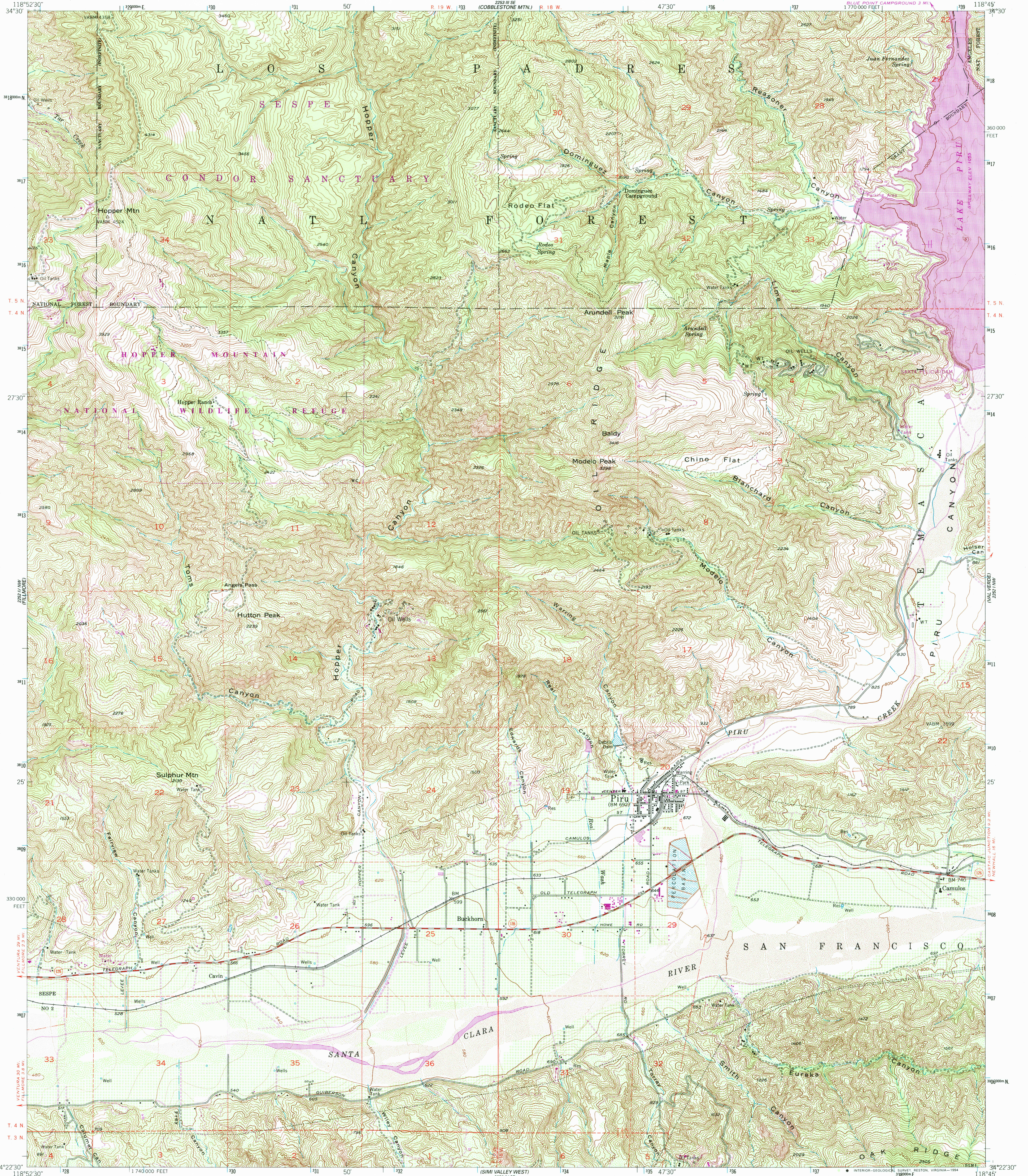


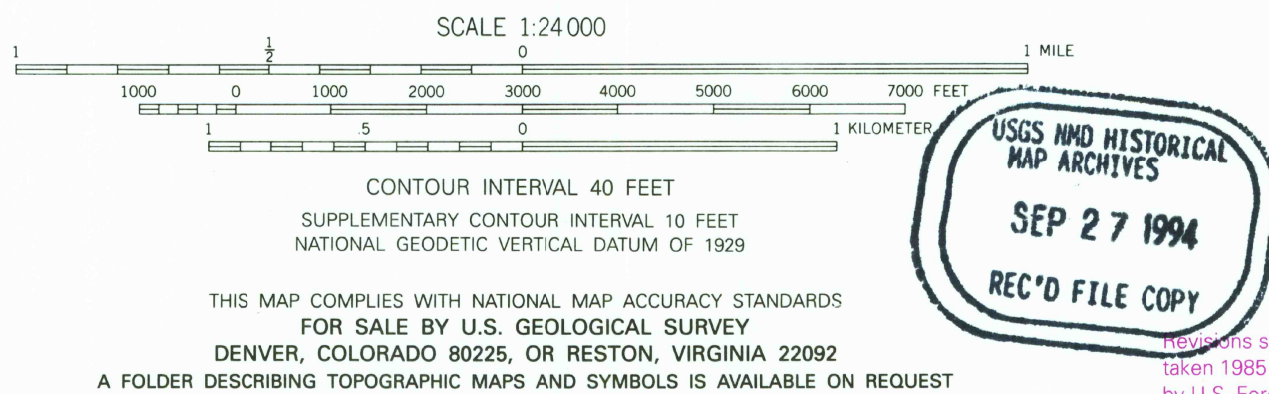
UNITED STATES
DEPARTMENT OF THE INTERIOR
GEOLOGICAL SURVEY

PIRU QUADRANGLE
CALIFORNIA-VENTURA CO.
7.5 MINUTE SERIES (TOPOGRAPHIC)



Produced by the United States Geological Survey
Control by USGS and NOS/NOAA
Compiled from aerial photographs taken 1947
Topography by plane-table surveys 1952
North American Datum of 1927 (NAD 27). Projection and
10000-foot ticks: California Coordinate System, zone 5
(Lambert Conformal Conic)
Blue 1000-meter Universal Transverse Mercator ticks, zone 11
North American Datum of 1983 (NAD 83) is shown by dashed
corner ticks. The values of the shift between NAD 27 and NAD 83
for 7.5-minute intersections are obtainable from National Geodetic
Survey NADCON software
There may be private inholdings within the boundaries of the
National or State reservations shown on this map
Where omitted, land lines have not been established

Photorevised from 1991 source; no major culture or
drainage changes observed. Boundaries and names
revised 1994



ROAD CLASSIFICATION
Primary highway, hard surface
Secondary highway, hard surface
Interstate Route
U. S. Route
State Route
Light duty road, hard or improved surface
Unimproved road
PIRU, CA
34118-D7-TF-024
1952
PHOTOREVISED 1988
MINOR REVISION 1994
DMA 2252 IV NE-SERIES V895