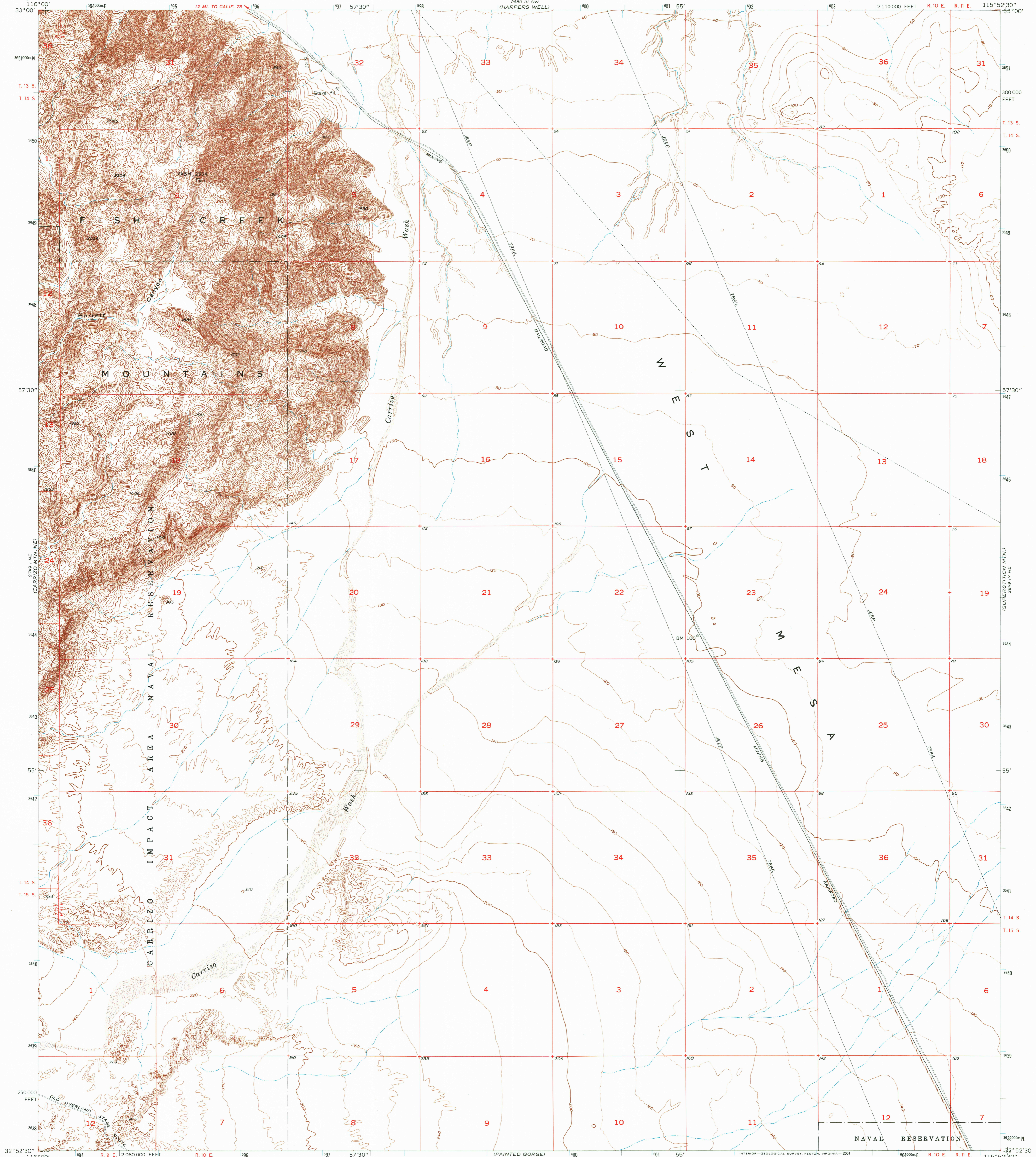




U.S. DEPARTMENT OF THE INTERIOR
U.S. GEOLOGICAL SURVEY

STATE OF CALIFORNIA
DEPARTMENT OF WATER RESOURCES

PLASTER CITY NW QUADRANGLE
CALIFORNIA-IMPERIAL CO.
7.5 MINUTE SERIES (TOPOGRAPHIC)
NW/4 PLASTER CITY 15' QUADRANGLE



Mapped, edited and published by the Geological Survey
Control by USGS, USC&GS, and USCE

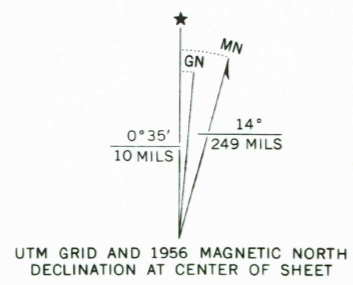
Topography from planetable surveys by USBR 1940-41
and from aerial photographs by Kelsh plotter
Aerial photographs taken 1953. Field check 1956

Polyconic projection. 1927 North American datum
10,000-foot grid based on California coordinate system,
zone 6

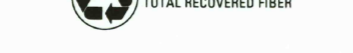
1000-meter Universal Transverse Mercator grid ticks,
zone 11, shown in blue

To place on the predicted North American Datum 1983
move the projection lines 3 meters south and
77 meters east as shown by dashed corner ticks

Dashed land lines indicate approximate locations
There may be private inholdings within the boundaries of
the National or State reservations shown on this map

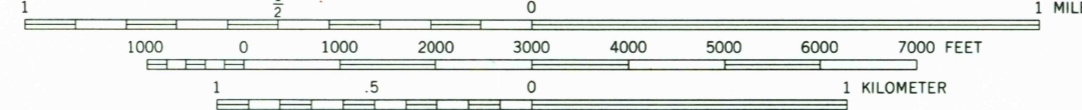


UTM GRID AND 1956 MAGNETIC NORTH
DECLINATION AT CENTER OF SHEET



Sand and levees added 2001

SCALE 1:24 000



CONTOUR INTERVAL 20 FEET
DOTTED LINES REPRESENT 10-FOOT CONTOURS
NATIONAL GEODETIC VERTICAL DATUM OF 1929

THIS MAP COMPLIES WITH NATIONAL MAP ACCURACY STANDARDS
FOR SALE BY U.S. GEOLOGICAL SURVEY, P.O. BOX 25286, DENVER, COLORADO 80225
A FOLDER DESCRIBING TOPOGRAPHIC MAPS AND SYMBOLS IS AVAILABLE ON REQUEST

RECEIVED
MAR 3 2002

ROAD CLASSIFICATION
Unimproved dirt -----



QUADRANGLE LOCATION

HISTORICAL MAP ARCHIVES

PLASTER CITY NW, CALIF.

NW/4 PLASTER CITY 15' QUADRANGLE
32115-H8-TF-024

Map photoinspected 1976
No major culture or drainage changes observed

1956
PHOTOINSPECTED 1976
DMA 2849 IV NW-SERIES V895



ISBN 0-607-09496-6
9 780607 094966