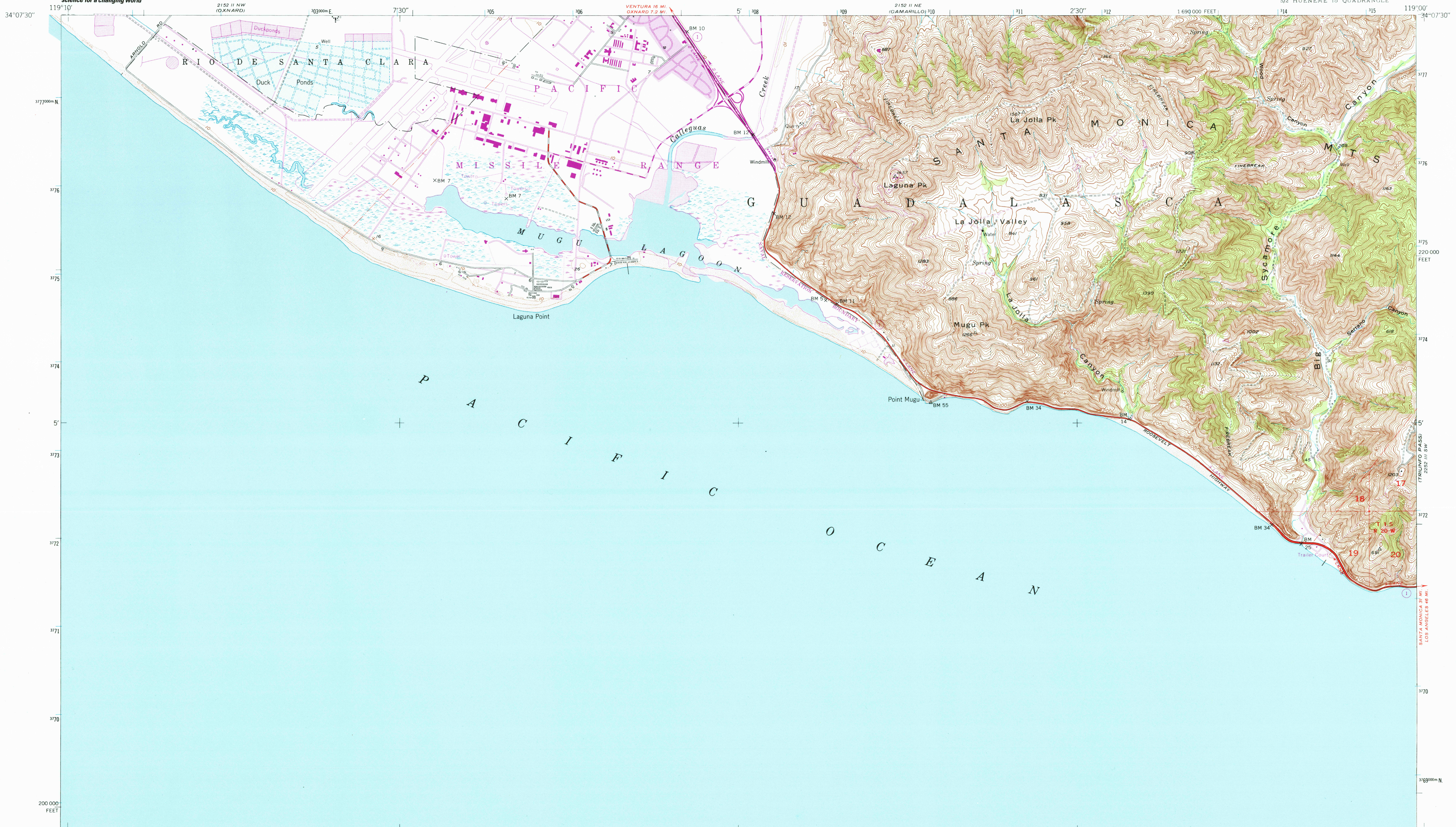


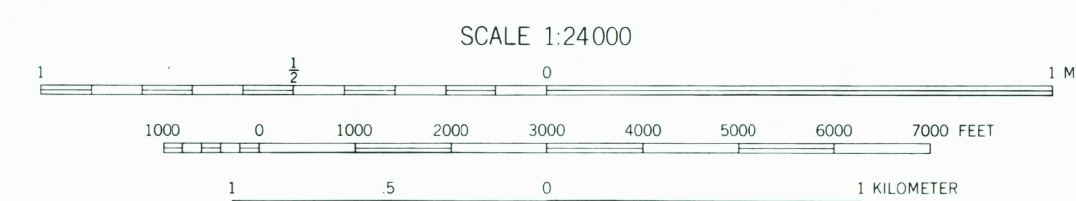
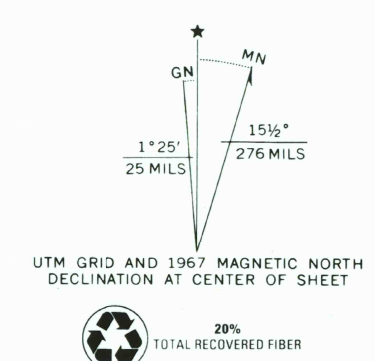


U.S. DEPARTMENT OF THE INTERIOR  
U.S. GEOLOGICAL SURVEY

POINT MUGU QUADRANGLE  
CALIFORNIA-VENTURA CO.  
5X10 MINUTES (TOPOGRAPHIC)  
S/2 HUENEME 15' QUADRANGLE



Mapped, edited, and published by the Geological Survey  
Control by USC&GS  
Topography from aerial photographs by multiplex methods  
Aerial photographs taken 1947. Field check 1949  
Polyconic projection. 1927 North American datum  
10,000-foot grid based on California coordinate system,  
zone 5  
1000-meter Universal Transverse Mercator grid ticks,  
zone 11, shown in blue  
To place on the predicted North American Datum 1983  
move the projection lines 2 meters north and  
85 meters east as shown by dashed corner ticks  
Data shown in purple compiled from aerial photographs  
taken 1967. This information not field checked  
Purple tint indicates extension of urban areas



CONTOUR INTERVAL 20 FEET  
DOTTED LINES REPRESENT HALF-INTERVAL CONTOURS  
NATIONAL GEODETIC VERTICAL DATUM OF 1929  
SHORELINE SHOWN REPRESENTS THE APPROXIMATE LINE OF MEAN HIGH WATER  
THE AVERAGE RANGE OF TIDE IS APPROXIMATELY 4 FEET

THIS MAP COMPLIES WITH NATIONAL MAP ACCURACY STANDARDS  
FOR SALE BY U.S. GEOLOGICAL SURVEY, P.O. BOX 25286, DENVER, COLORADO 80225  
A FOLDER DESCRIBING TOPOGRAPHIC MAPS AND SYMBOLS IS AVAILABLE ON REQUEST



QUADRANGLE LOCATION  
Map photoinspected 1974  
No major culture or drainage changes observed

ROAD CLASSIFICATION  
Heavy-duty ——— Light-duty ———  
Medium-duty ——— Unimproved dirt ———  
○ State Route

POINT MUGU, CALIF.  
S/2 HUENEME 15' QUADRANGLE  
34119-A1-TF-024  
PHOTOINSPECTED 1974  
1949  
DMA 2152 II SE—SERIES V895

RECEIVED  
DEC 31 2000  
USGS/IMH  
HISTORICAL MAP ARCHIVES

