

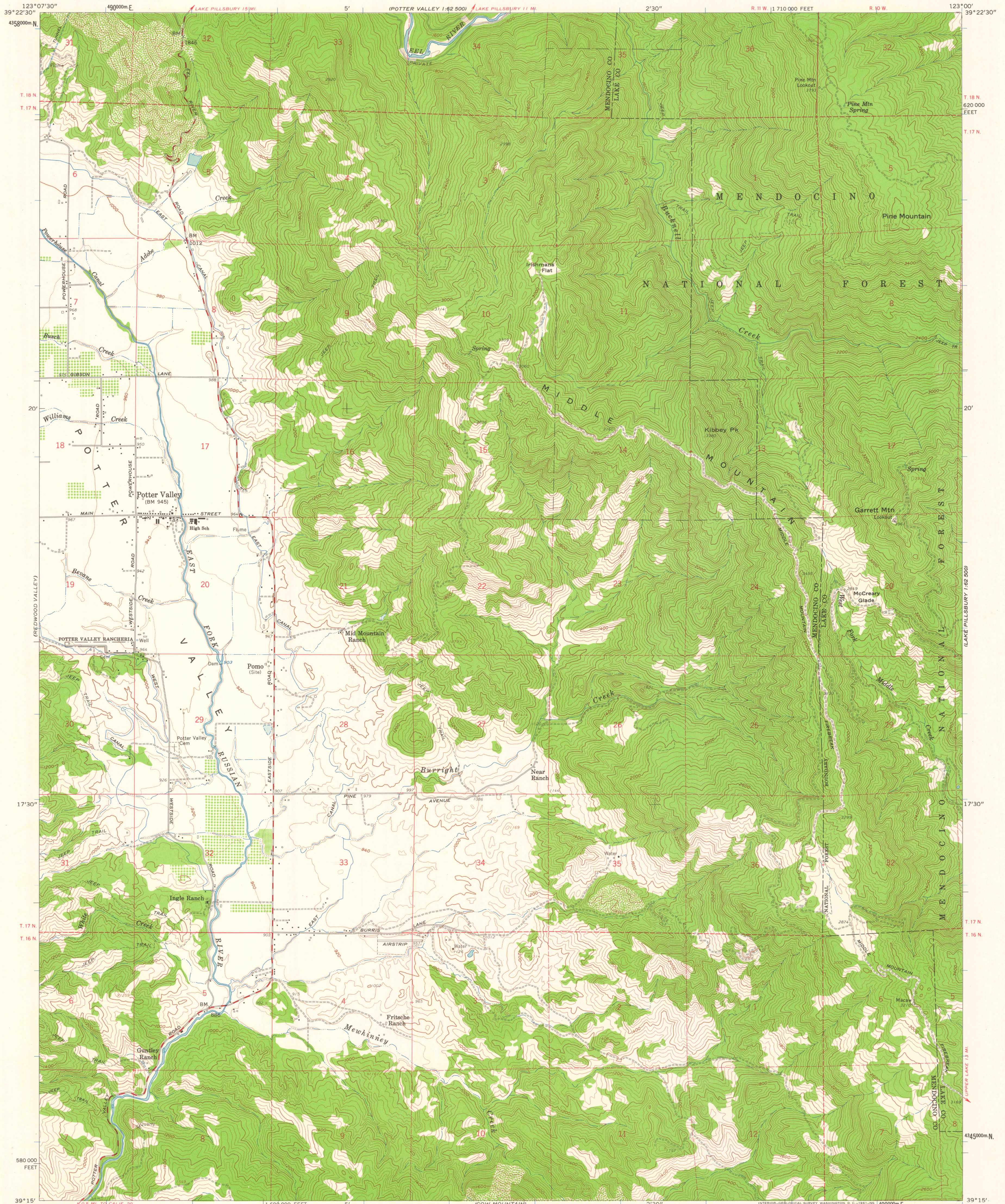
POTTER VALLEY
1:62,500

LAKE PILLSBURY
1:62,500

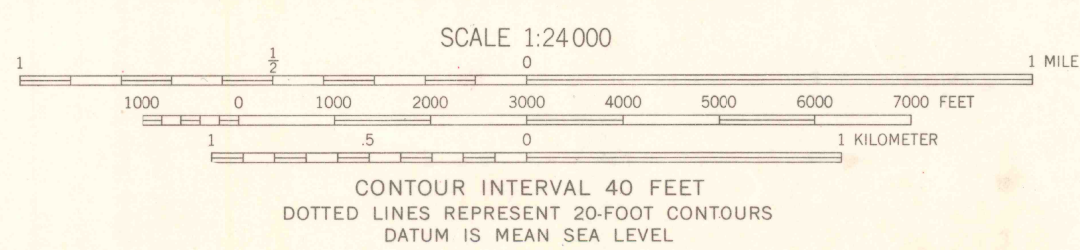
UNITED STATES
DEPARTMENT OF THE INTERIOR
GEOLOGICAL SURVEY

STATE OF CALIFORNIA
DEPARTMENT OF WATER RESOURCES

POTTER VALLEY QUADRANGLE
CALIFORNIA
7.5 MINUTE SERIES (TOPOGRAPHIC)
SE/4 POTTER VALLEY 15' QUADRANGLE



Mapped, edited, and published by the Geological Survey
Control by USGS, USC&GS, and USCE
Topography from aerial photographs by photogrammetric methods
Aerial photographs taken 1957. Field check 1960
Polyconic projection. 1927 North American datum
10,000-foot grid based on California coordinate system, zone 2
1000-meter Universal Transverse Mercator grid ticks,
zone 10, shown in blue
Dashed land lines indicate approximate locations



USGS
Historical File
Topographic Division
ROAD CLASSIFICATION
Medium-duty — Light-duty
Unimproved dirt - - - - -



U.S.G.S.
FILE COPY
TOPOGRAPHIC DIVISION

POTTER VALLEY, CALIF.
SE/4 POTTER VALLEY 15' QUADRANGLE
N3915-W12300/7.5
1960

THIS MAP COMPLIES WITH NATIONAL MAP ACCURACY STANDARDS
FOR SALE BY U.S. GEOLOGICAL SURVEY, DENVER 25, COLORADO OR WASHINGTON 25, D.C.
A FOLDER DESCRIBING TOPOGRAPHIC MAPS AND SYMBOLS IS AVAILABLE ON REQUEST

NOV 17 1961
NOV 17 1961

3110