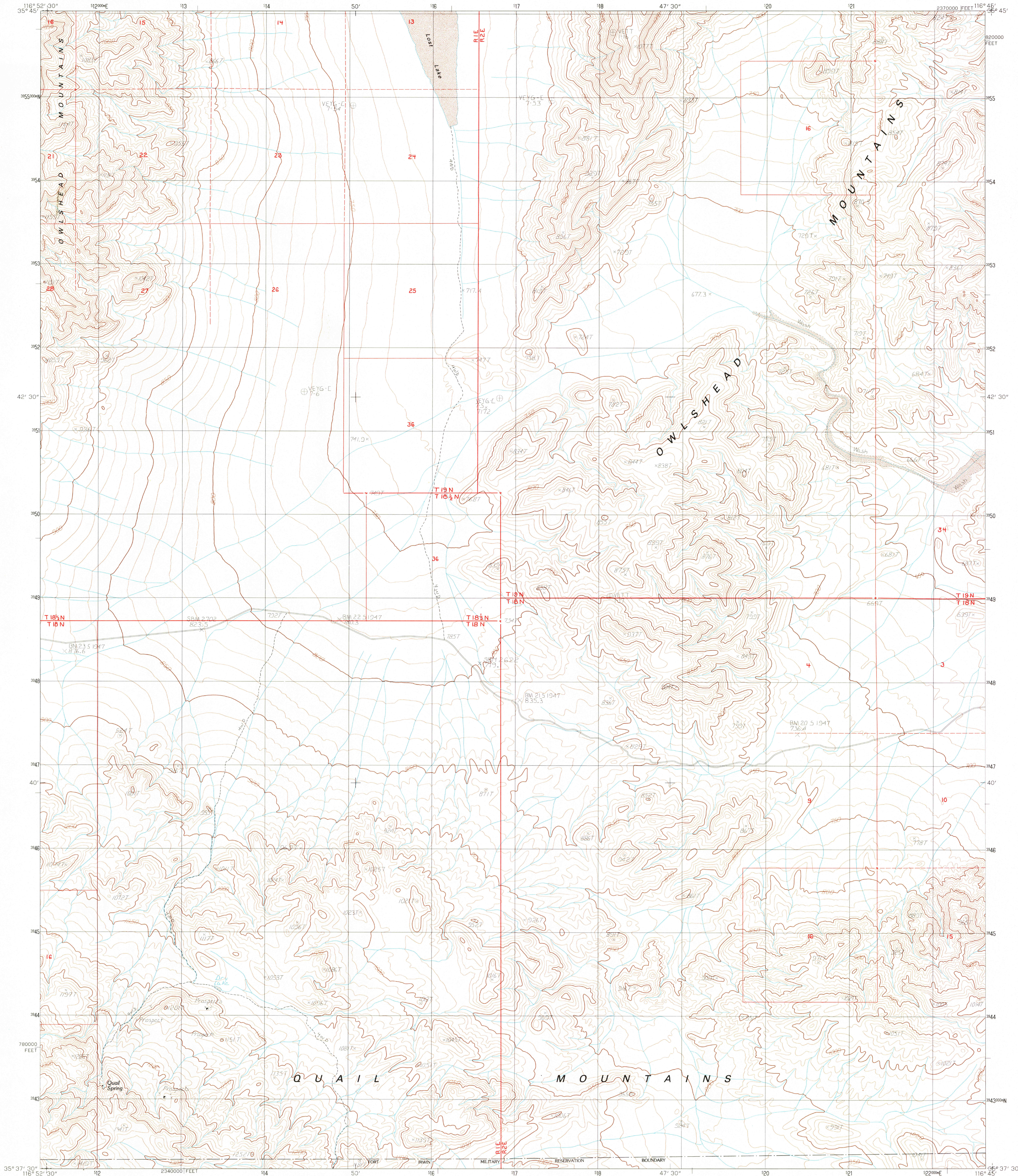


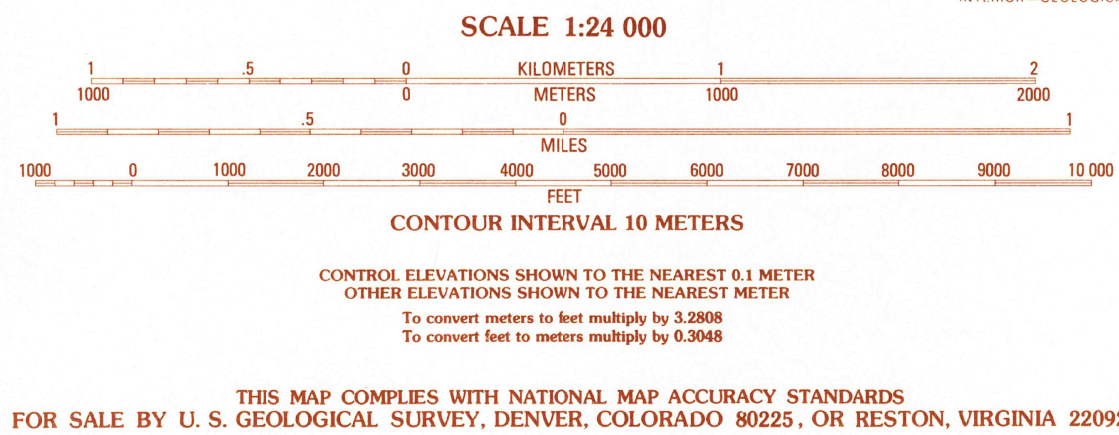
UNITED STATES
DEPARTMENT OF THE INTERIOR
GEOLOGICAL SURVEY

QUAIL SPRING QUADRANGLE
CALIFORNIA—SAN BERNARDINO CO.
7.5 MINUTE SERIES (TOPOGRAPHIC)



PRODUCED BY THE UNITED STATES GEOLOGICAL SURVEY
CONTROL BY USGS, NOS/NOAA
COMPILED FROM AERIAL PHOTOGRAPHS TAKEN 1976 AND 1980
FIELD CHECKED 1981. MAP EDITED 1984
PROJECTION UNIVERSAL TRANSVERSE MERCATOR
GRID: 1000-METER UNIVERSAL TRANSVERSE MERCATOR, ZONE 11
10,000-FOOT STATE GRID TICS, CALIFORNIA, ZONE 5
UTM GRID DECLINATION 1907 EAST
1980 MAGNETIC NORTH DECLINATION 14°30' EAST
VERTICAL DATUM NATIONAL GEODETIC VERTICAL DATUM OF 1929
HORIZONTAL DATUM 1927 NORTH AMERICAN DATUM
To place on the predicted North American Datum of 1983,
move the projection lines as shown by dashed corner ticks
(5 meters north / 80 meters east)
There may be private inholdings within the boundaries of any
Federal and State Reservations shown on this map
Where omitted, land lines have not been established

PROVISIONAL MAP
Produced from original
manuscript drawings. Infor-
mation shown as of date of
field check. 2



QUADRANGLE LOCATION

1	2	3	1 Wingate Wash West
4	5	2 Wingate Wash East	3 Confidence Hills West
6	7	4 Hidden Spring	5 Owl Lake
		6 West of Leach Spring	7 Leach Spring
		8 Leach Lake	

ADJOINING 7.5' QUADRANGLE NAMES

CONTOURS AND ELEVATIONS IN METERS
ROAD LEGEND

Improved Road.....
Unimproved Road.....
Trail.....
Interstate Route U.S. Route State Route

QUAIL SPRING, CALIF.
PROVISIONAL EDITION 1984

RETURN TO:
NHD HISTORICAL MAP ARCHIVES
USGS NATIONAL CENTER, MS-522
RESTON, VA 22092

35116-F7-TM-024