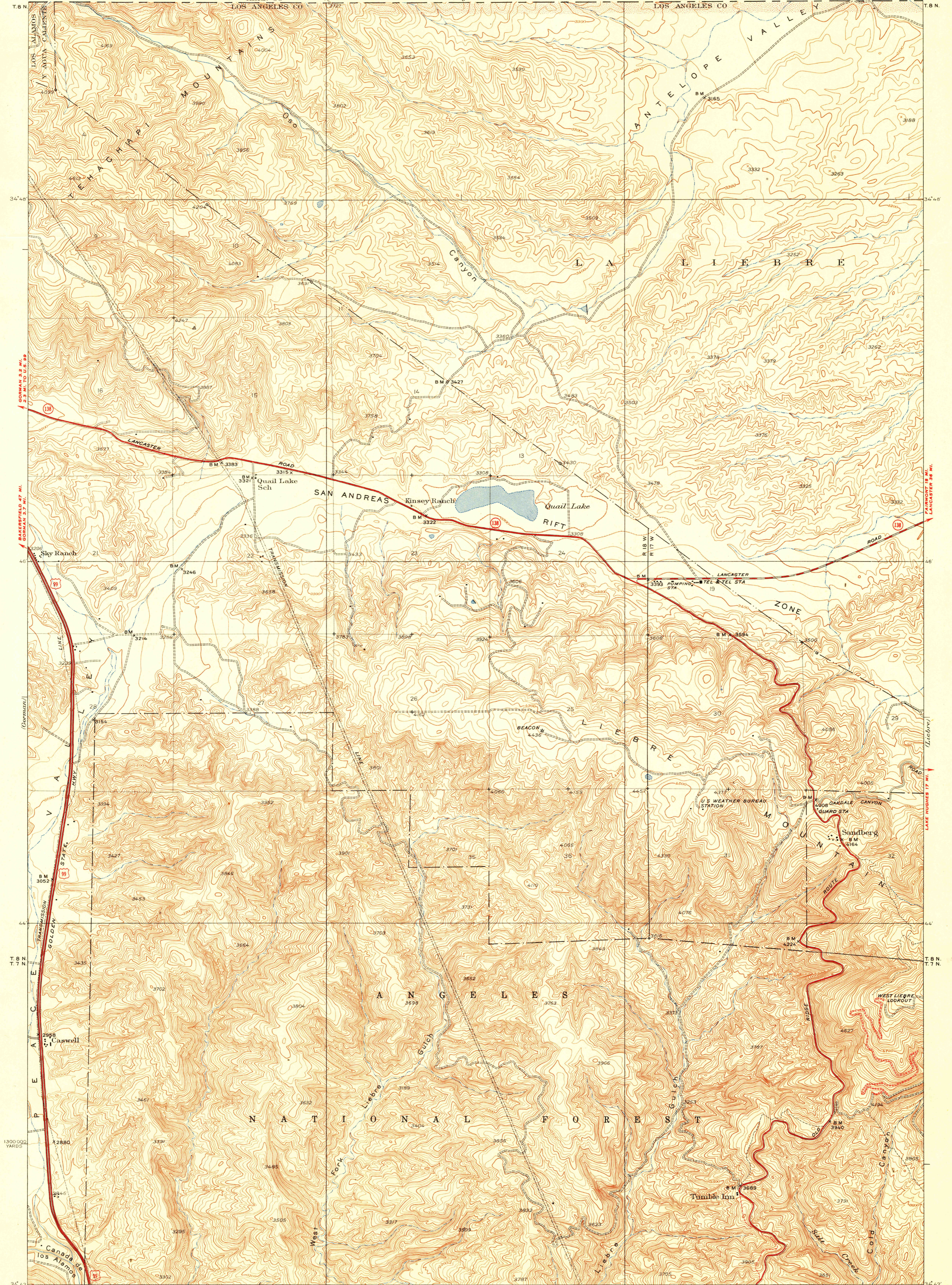


U. S. G. S.
FILE COPY
Inspection and Editing.

UNITED STATES
DEPARTMENT OF THE INTERIOR
GEOLOGICAL SURVEY

STATE OF CALIFORNIA
COUNTY OF LOS ANGELES
C. E. ARNOLD COUNTY ENGINEER AND SURVEYOR

CALIFORNIA
LOS ANGELES COUNTY
QUAIL QUADRANGLE

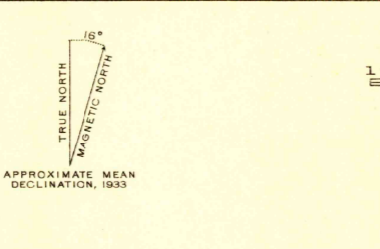


Topography by F. K. Van Zandt and A. Fankhauser
Surveyed in 1932-33
Culture revised in 1947 and 1950 by Los Angeles County (T.H. Moncure)

ROAD CLASSIFICATION

HARD-SURFACE ALL WEATHER ROADS DRY WEATHER ROADS
Heavy-duty ——— 4 LANE 16 LANE Improved dirt ———
Medium-duty ——— 4 LANE 16 LANE Unimproved dirt ———
Loose-surface, graded, or narrow hard-surface - - - - -

U. S. Route State Route



FOR SALE BY U.S. GEOLOGICAL SURVEY, FEDERAL CENTER, DENVER, COLORADO OR WASHINGTON 25, D.C.
A FOLDER DESCRIBING TOPOGRAPHIC MAPS AND SYMBOLS IS AVAILABLE ON REQUEST

USGS
Historical File
Topographic Division

U. S. G. S.
FILE COPY
Inspection and Editing.

Polyconic projection. North American datum
5000 yard grid based upon U.S. zone system. G
Land lines pertaining to parts of
T. 7 and B. N. R. 18 W. and T. 7 N.
R. 17 W. are omitted because land
plats and topography cannot
be reconciled

QUAIL CALIF
Edition of 1938
reprinted 1951
with corrections
N3442 - W11842/72X6