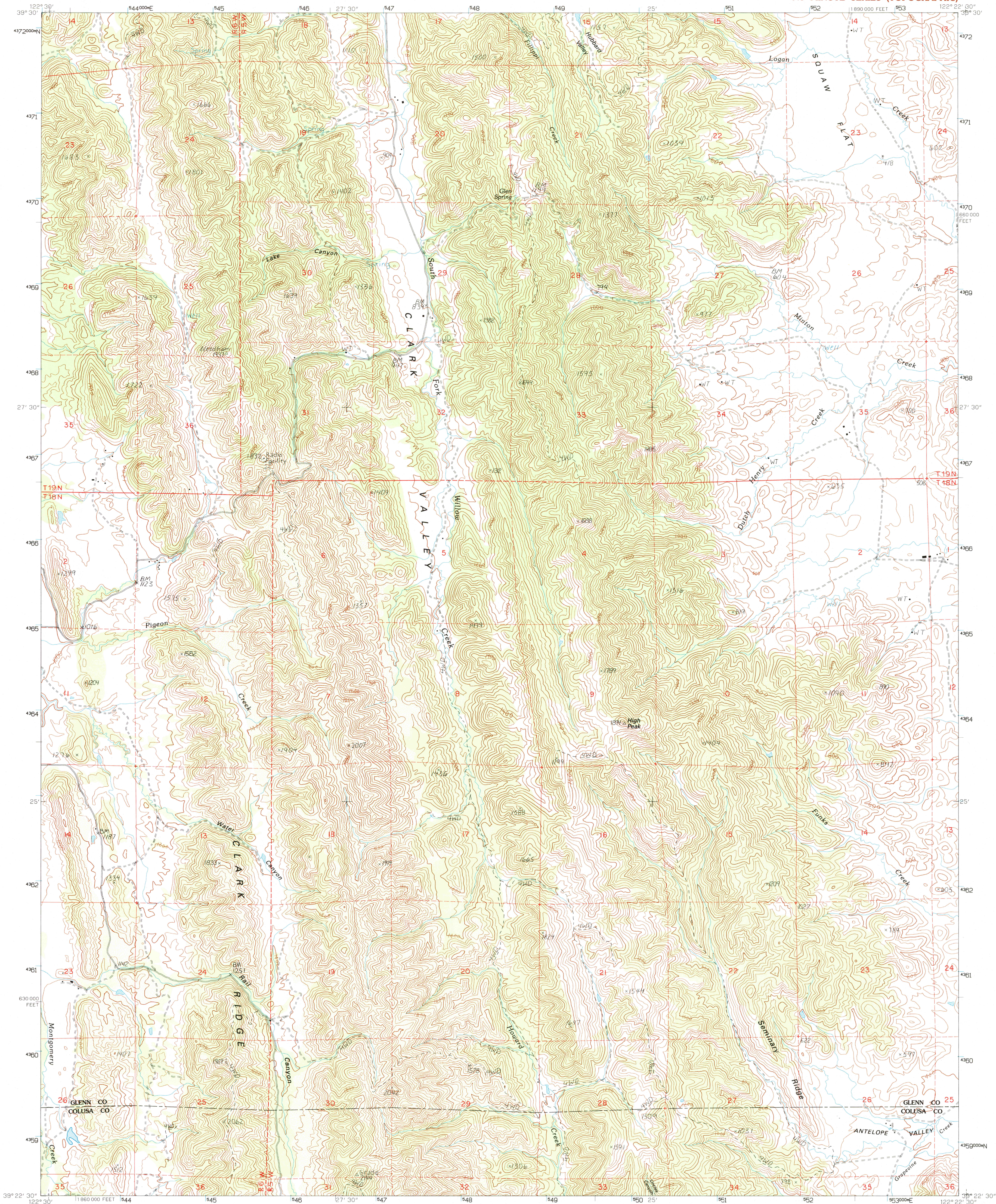


UNITED STATES
DEPARTMENT OF THE INTERIOR
GEOLOGICAL SURVEY

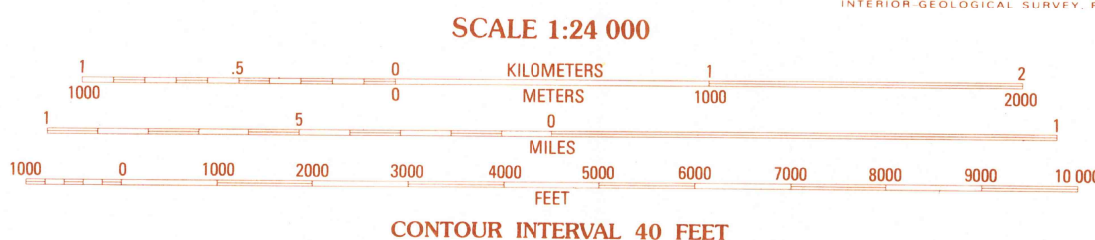
RAIL CANYON QUADRANGLE
CALIFORNIA
7.5 MINUTE SERIES (TOPOGRAPHIC)



PRODUCED BY THE UNITED STATES GEOLOGICAL SURVEY
CONTROL BY THE UNITED STATES GEOLOGICAL SURVEY
COMPILED FROM AERIAL PHOTOGRAPHS TAKEN 1957
FIELD CHECKED 1960
LIMITED REVISION FROM AERIAL PHOTOGRAPHS TAKEN 1985
FIELD CHECKED 1986
PROJECTION LAMBERT CONFORMAL CONIC
BLUE 1000-METER UNIVERSAL TRANSVERSE MERCATOR TICS ZONE 10
10 000-FOOT STATE GRID TICS NORTH AMERICAN DATUM OF 1927 (NAD 27)
UTM GRID DECLINATION 0°21' EAST
1994 MAGNETIC NORTH DECLINATION 16° EAST
VERTICAL DATUM NATIONAL GEODETIC VERTICAL DATUM OF 1929
HORIZONTAL DATUM NORTH AMERICAN DATUM OF 1927 (NAD 27)
North American Datum of 1983 (NAD 83) is shown by dashed corner ticks. The values of the shift between NAD 27 and NAD 83 for 7.5-minute intersections are obtainable from National Geodetic Survey NADCON software.
There may be private inholdings within the boundaries of any Federal and State reservations shown on this map.
Public Land Survey System is shown as published in 1960 and verified or supplemented in 1986.
No distinction made between houses, barns, and other buildings.

PROVISIONAL MAP
Produced from original
manuscript drawings. Information
shown as of date of
field check.

Photinspected from 1991 source; no major culture or drainage changes observed.
Boundaries verified and names revised 1994.



THIS MAP COMPLIES WITH NATIONAL MAP ACCURACY STANDARDS
FOR SALE BY U.S. GEOLOGICAL SURVEY, DENVER, COLORADO 80225
OR RESTON, VIRGINIA 22092

| QUADRANGLE LOCATION | | | |
|---------------------|---|---|----------------|
| 1 | 2 | 3 | 1 Elk Creek |
| 4 | 5 | 6 | 2 Stone Valley |
| 7 | 8 | 9 | 3 Stonyford |
| | | | 4 Logan Ridge |
| | | | 5 Glendon Peak |
| | | | 6 Lodiaga |
| | | | 7 Sites |

ADJOINING 7.5' QUADRANGLE NAMES

ROAD LEGEND
Improved Road
Unimproved Road
Trail
Interstate Route
U.S. Route
State Route

RAIL CANYON, CA
PROVISIONAL EDITION 1989

39122-D4-TF-024
MINOR REVISION 1994

