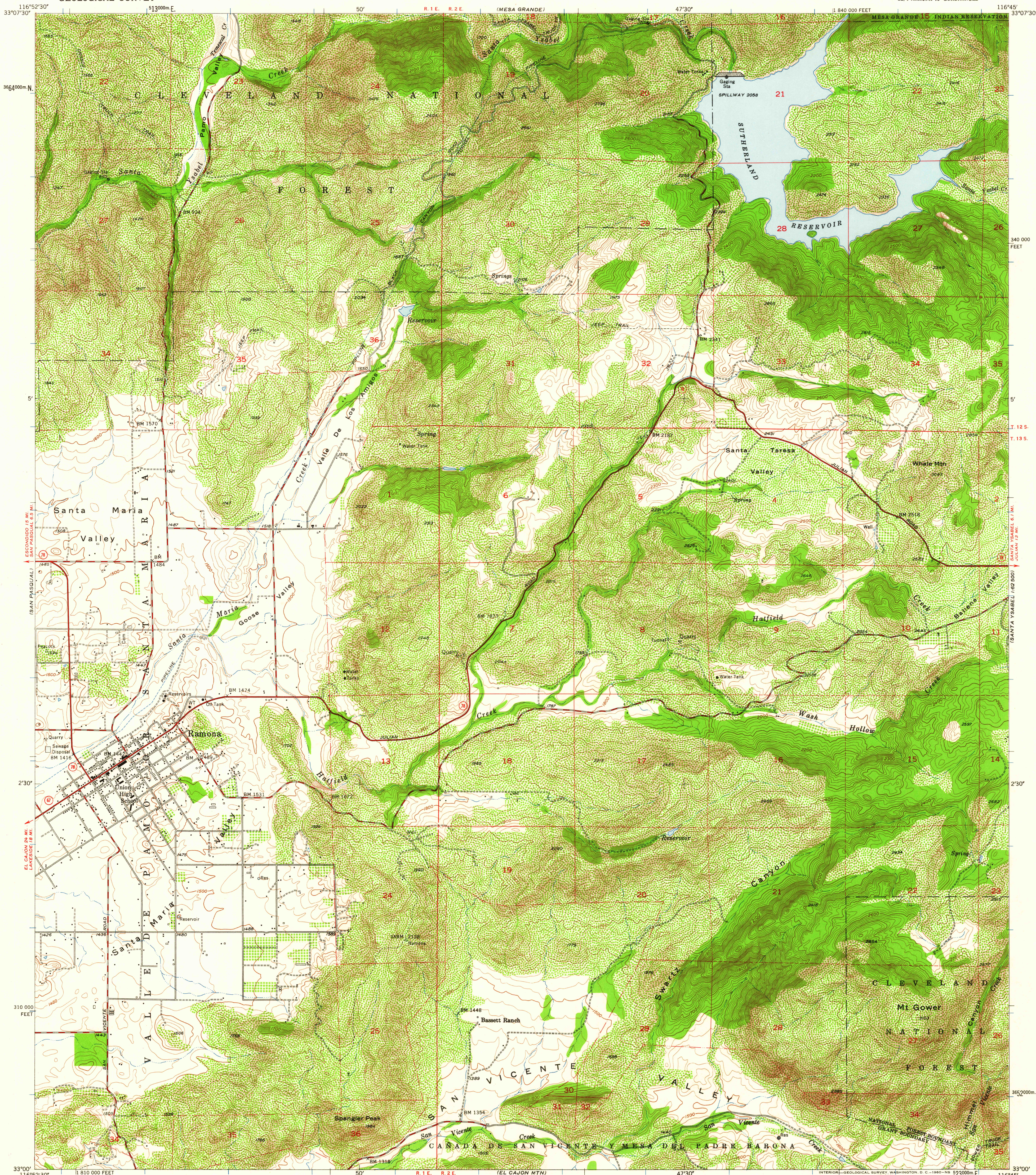
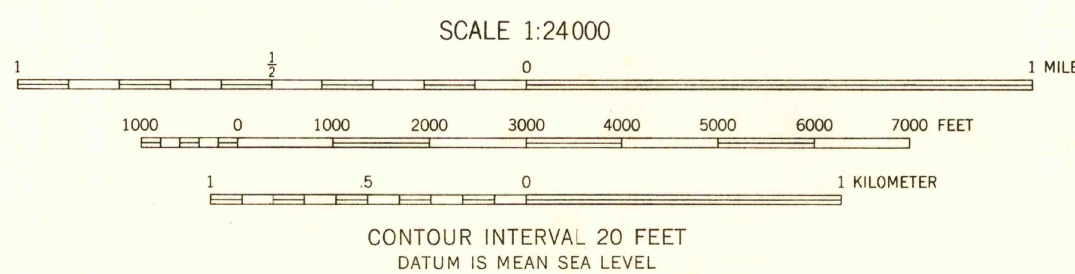
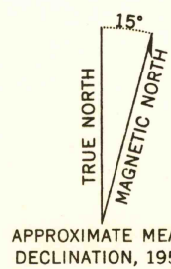


UNITED STATES
DEPARTMENT OF THE INTERIOR
GEOLOGICAL SURVEY

RAMONA QUADRANGLE
CALIFORNIA-SAN DIEGO CO.
7.5 MINUTE SERIES (TOPOGRAPHIC)
SE/4 RAMONA 15' QUADRANGLE



Mapped, edited, and published by the Geological Survey
Control by USGS, USC&GS, and USCE
Topography from aerial photographs by multiplex methods
Aerial photographs taken 1949. Field check 1955
Polyconic projection. 1927 North American datum
10,000-foot grid based on California coordinate system, zone 6
1000-meter Universal Transverse Mercator grid ticks,
zone 11, shown in blue
Dashed land lines indicate approximate locations



USGS
Historical File
Topographic Division



ROAD CLASSIFICATION
Heavy-duty ——— Light-duty ———
Medium-duty ——— Unimproved dirt ———
State Route —○—

RAMONA, CALIF.
SE/4 RAMONA 15' QUADRANGLE
N3300-W11645/7.5

1955

THIS MAP COMPLIES WITH NATIONAL MAP ACCURACY STANDARDS
FOR SALE BY U. S. GEOLOGICAL SURVEY, DENVER 25, COLORADO OR WASHINGTON 25, D. C.
A FOLDER DESCRIBING TOPOGRAPHIC MAPS AND SYMBOLS IS AVAILABLE ON REQUEST

5715