

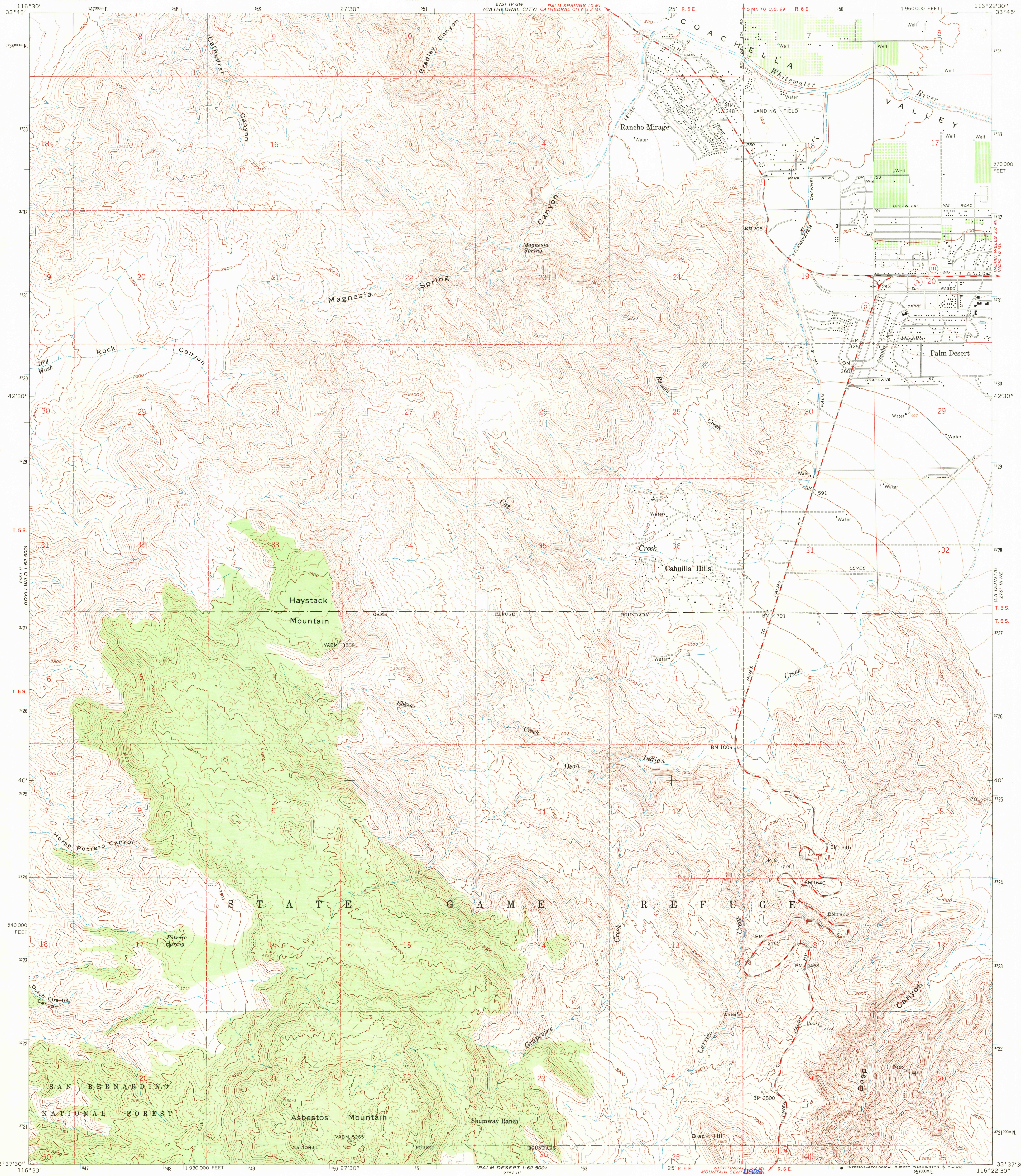
269 1 SE  
(PALM SPRINGS)

UNITED STATES  
DEPARTMENT OF THE INTERIOR  
GEOLOGICAL SURVEY

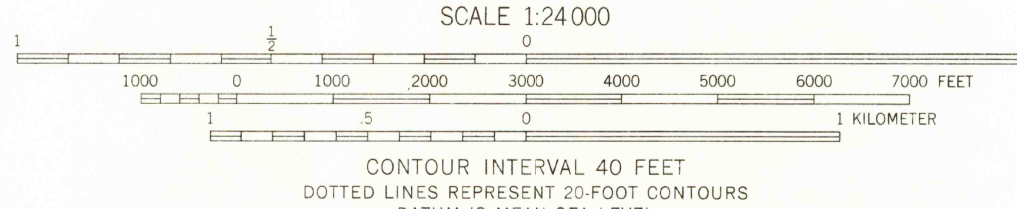
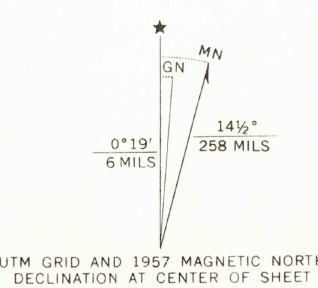
STATE OF CALIFORNIA  
EDMUND G. BROWN, GOVERNOR  
HARVEY O. BANKS, DIRECTOR OF WATER RESOURCES  
2751 IV SW  
(CATHEDRAL CITY) CATHEDRAL CITY 3.3 MI

RANCHO MIRAGE QUADRANGLE  
CALIFORNIA—RIVERSIDE CO.  
7.5 MINUTE SERIES (TOPOGRAPHIC)  
NW 4 PALM DESERT 15' QUADRANGLE  
1960 000 FEET

270 1 SE  
(MONTANA)



Mapped, edited, and published by the Geological Survey  
Control by USGS, USC&GS, and USCE  
Topography from aerial photographs by photogrammetric methods  
Aerial photographs taken 1954. Advance field check 1957  
Polyconic projection. 1927 North American datum  
10,000-foot grid based on California coordinate system, zone 6  
1000-meter Universal Transverse Mercator grid ticks,  
zone 11, shown in blue  
Dashed land lines indicate approximate locations  
Unchecked elevations are shown in brown



THIS MAP COMPLIES WITH NATIONAL MAP ACCURACY STANDARDS  
FOR SALE BY U.S. GEOLOGICAL SURVEY, DENVER, COLORADO 80225, OR WASHINGTON, D.C. 20242  
A FOLDER DESCRIBING TOPOGRAPHIC MAPS AND SYMBOLS IS AVAILABLE ON REQUEST

Historical File  
Topographic Division



U.S.G.S.  
FILE COPY  
TOPOGRAPHIC DIVISION

ROAD CLASSIFICATION  
Medium-duty ——— Light-duty ———  
Unimproved dirt ———  
State Route

RANCHO MIRAGE, CALIF.  
NW 4 PALM DESERT 15' QUADRANGLE  
N3337.5—W11622.5/7.5  
1957  
AMS 2751 III NW—SERIES V895

3670  
OCT 1 1970