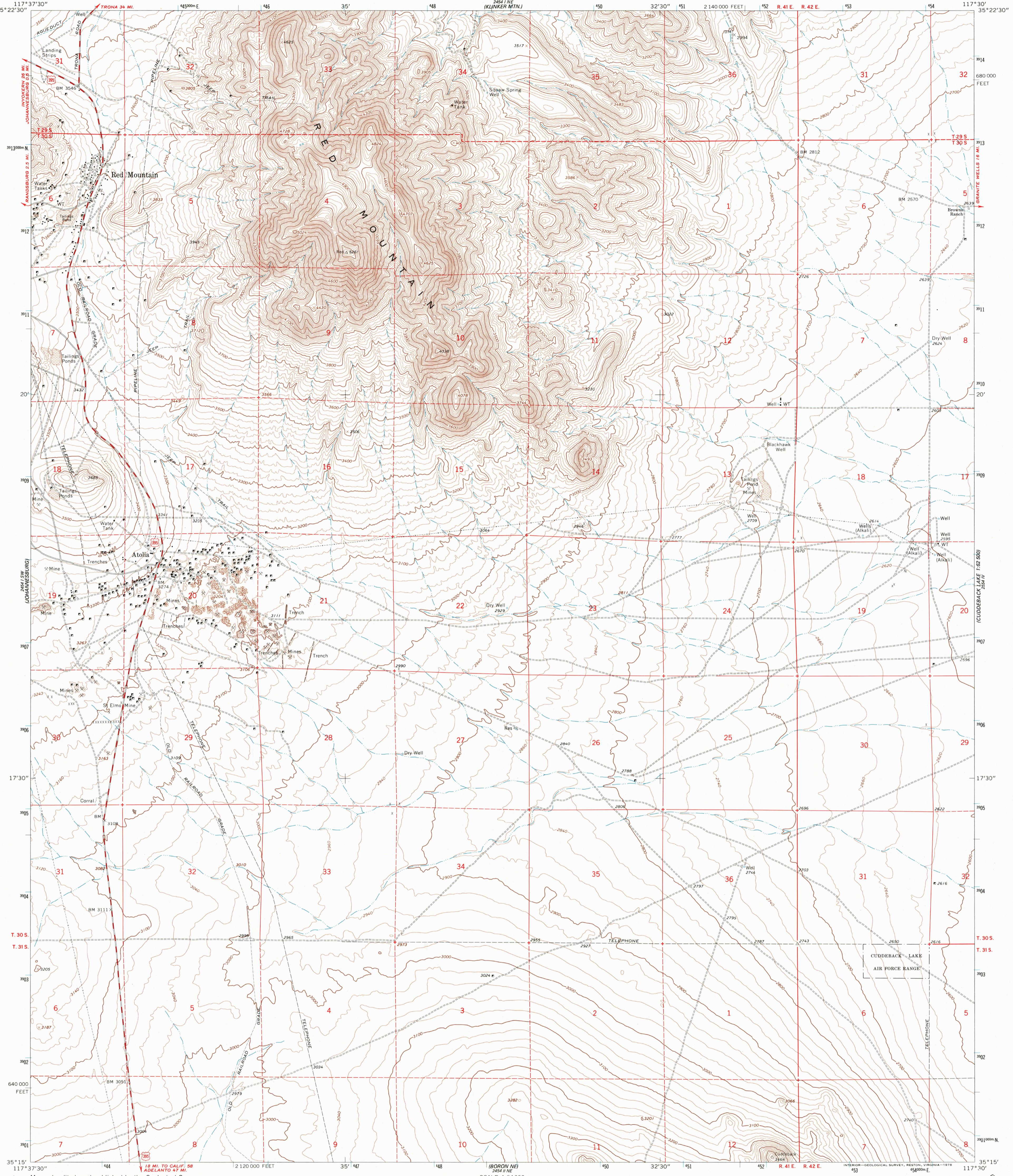
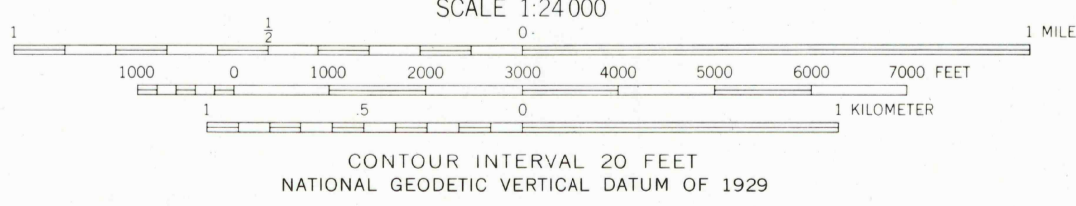
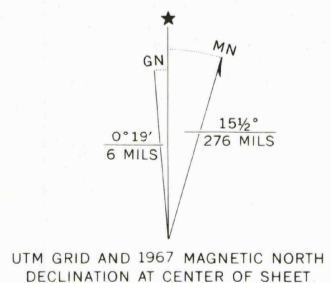


EL 2550 FEET  
117° 37' 30" W

2550 FT  
117° 37' 30" W  
CUDEBACK LAKE  
117° 30' W



Mapped, edited, and published by the Geological Survey  
Control by USGS and USC&GS  
Topography by photogrammetric methods from aerial  
photographs taken 1965. Field checked 1967  
Polyconic projection. 1927 North American datum  
10,000-foot grid based on California coordinate system, zone 5  
1000-meter Universal Transverse Mercator grid ticks,  
zone 11, shown in blue  
**Map photoinspected 1973**  
No major culture or drainage changes observed



CONTOUR INTERVAL 20 FEET  
NATIONAL GEODETIC VERTICAL DATUM OF 1929



ROAD CLASSIFICATION

Medium-duty	Light-duty
Unimproved dirt	U.S. Route

RED MOUNTAIN, CALIF.  
N3515-W11730/7.5

THIS MAP COMPLIES WITH MAP ACCURACY STANDARDS  
FOR SALE BY U.S. GEOLOGICAL SURVEY, P.O. BOX 25286, DENVER, COLORADO 80225  
A FOLDER DESCRIBING TOPOGRAPHIC MAPS AND SYMBOLS IS AVAILABLE ON REQUEST

1967  
PHOTOINSPECTED 1973  
AMS 2454 I SE—SERIES V895

2550 FT  
117° 37' 30" W  
CUDEBACK LAKE  
117° 30' W  
ISBN 0-607-09547-4  
917806071095678