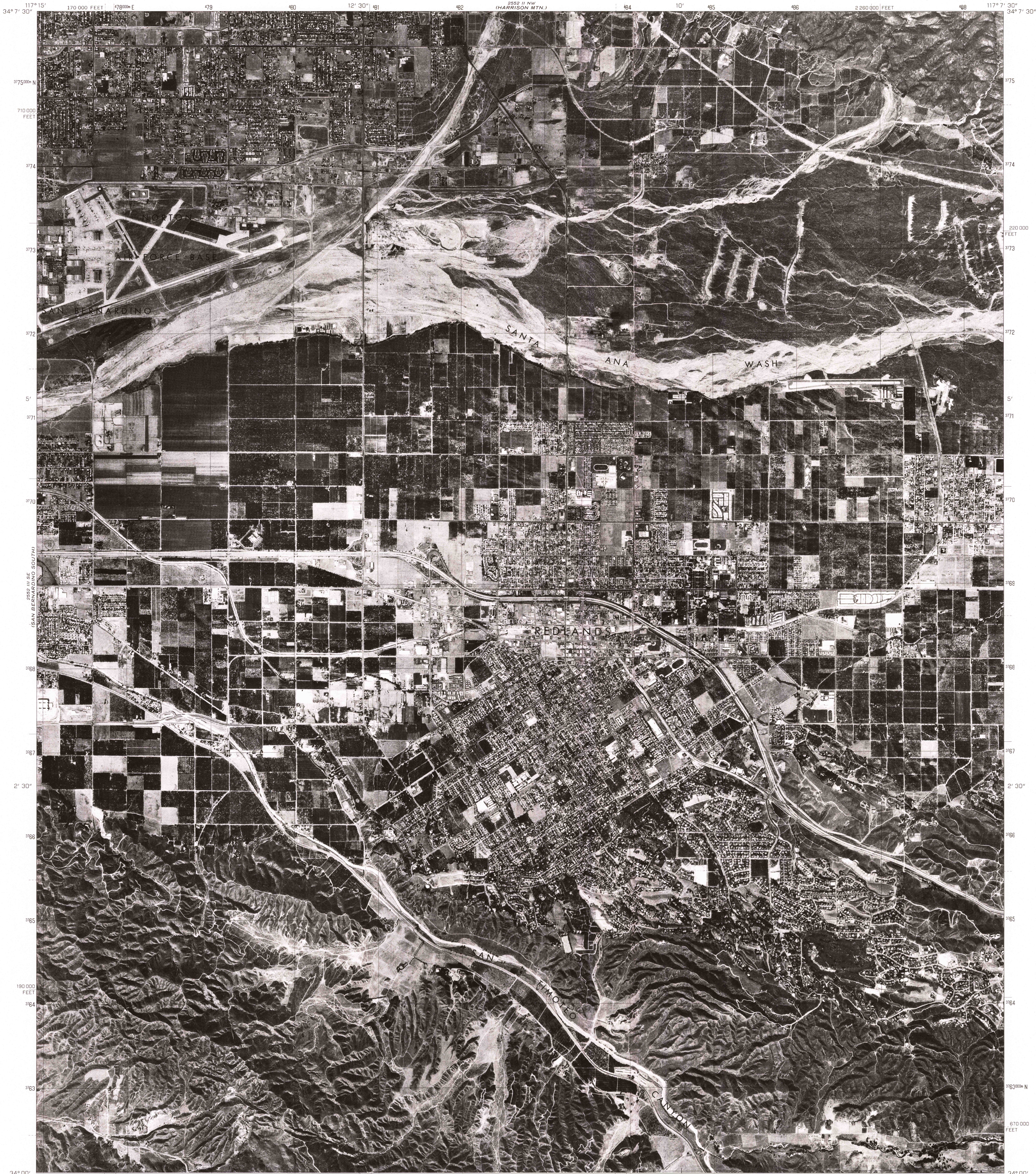


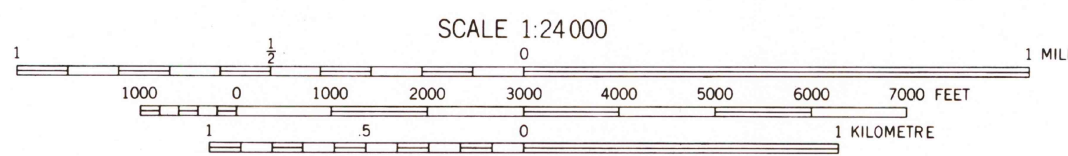
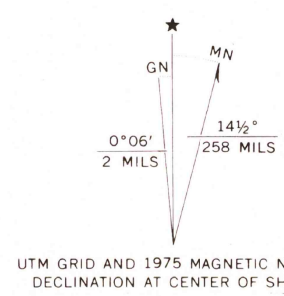
DEPENDING ON NORTH
2552 II NE

UNITED STATES
DEPARTMENT OF THE INTERIOR
GEOLOGICAL SURVEY

REDLANDS QUADRANGLE
CALIFORNIA
7.5 MINUTE SERIES (ORTHOPHOTOQUAD)



Produced and published by the Geological Survey
in cooperation with the Soil Conservation Service
Orthophotograph prepared from 1:75,000-scale
aerial photographs taken Sept. 18, 1975
Projection: California coordinate system, zone 5
(Lambert conformal conic)
10,000-foot grids based on California coordinate system,
zones 5 and 6
1000-metre Universal Transverse Mercator grid,
zone 11. 1927 North American datum
Photo imagery transformed by scanning techniques
which may produce double or mismatched images;
use the mean of image positions for map point



THIS MAP COMPLIES WITH NATIONAL MAP ACCURACY STANDARDS
FOR SALE BY U. S. GEOLOGICAL SURVEY, DENVER, COLORADO 80225, OR RESTON, VIRGINIA 22092



PRINCIPAL NUMBERED HIGHWAYS
Interstate Route U. S. Route State Route

USGS
Historical File
Topographic Division

This quadrangle area also covered by 1:24,000-scale
topographic map

REDLANDS, CALIF.
N3400-W11707.5/7.5

1975

AMS 2552 II SW—SERIES V095

1600
OCT 20 1977