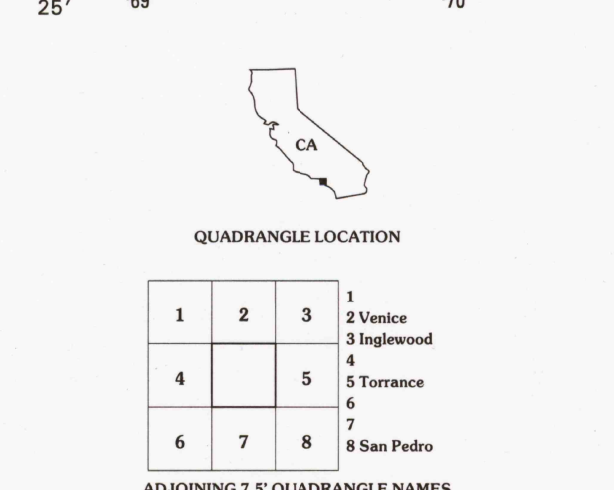
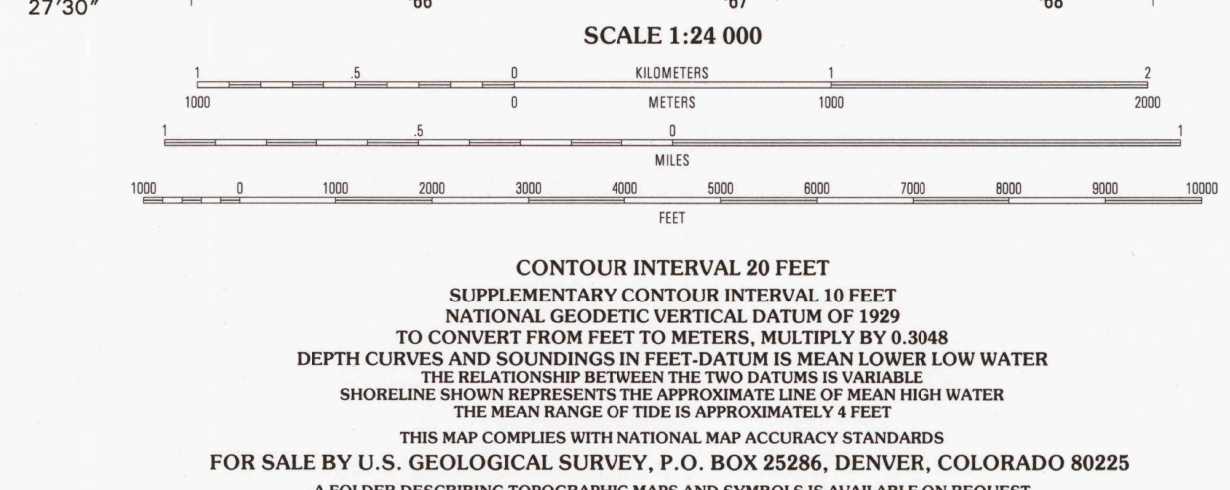
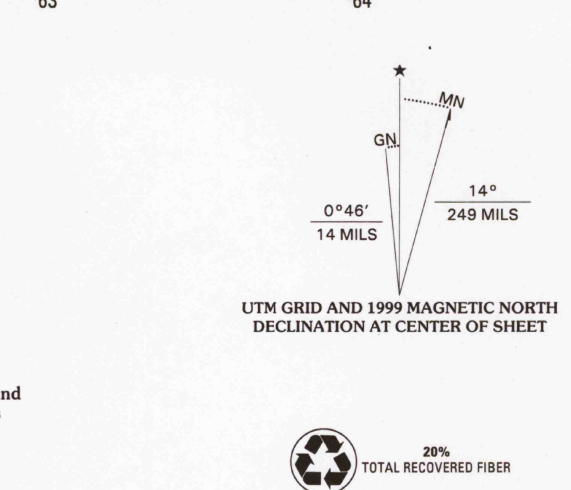




Produced by the United States Geological Survey  
Topography compiled 1963. Planimetry derived from imagery taken 1978 and other sources. Photoinspected using imagery taken 1996; no major culture or drainage changes observed. P.S.S. and survey control current as of 1963. Boundaries, other than corporate, verified 1999.  
Information shown in purple may not meet USGS content standards and may conflict with previously mapped contours.  
North American Datum of 1927 (NAD 27). Projection and 1000-meter grid: Universal Transverse Mercator, zone 11. 10 000-foot ticks: California Coordinate System of 1927 (zone 7).  
North American Datum of 1983 (NAD 83) is shown by dashed corner ticks. The values of the shift between NAD 27 and NAD 83 for 7.5-minute intersections are obtainable from National Geodetic Survey NADCON software.  
Selected hydrographic data compiled from NOS Charts 5144 (1964) and 5142 (1962). This information is not intended for navigational purposes.  
There may be private inholdings within the boundaries of the National or State reservations shown on this map.



REDONDO BEACH, CA  
1996  
NIMA 2351 IV SW-SERIES V895  
ISBN 0-607-92747-4  
9 780607 927474