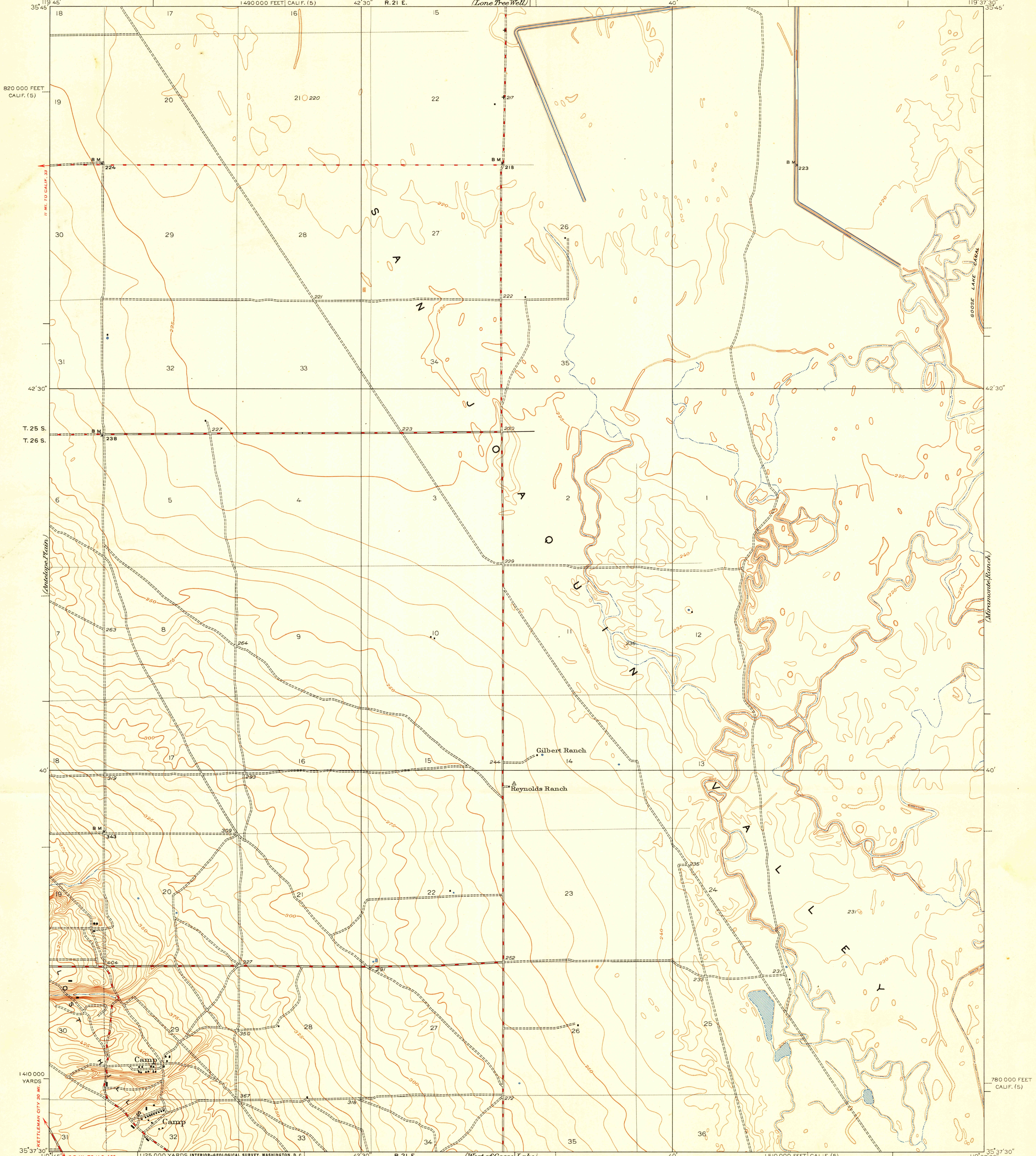
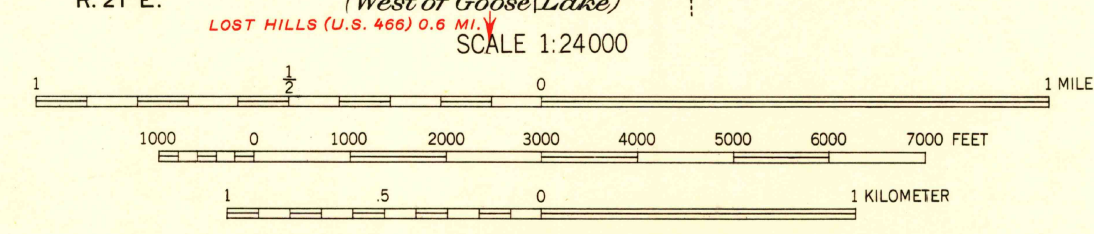
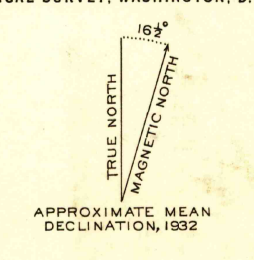


U.S.G.S.
FILE COPY
Inspection and Marking.



ROAD CLASSIFICATION
HARD-SURFACE ALL WEATHER ROADS DRY WEATHER ROADS
Heavy-duty LANE'S LANE Improved dirt
Medium-duty LANE'S LANE Unimproved dirt
Loose-surface, graded, or narrow hard-surface
U. S. Route State Route



USGS
Historical File
Topographic Division

Polyconic projection, North American datum
5000 yard grid based on U.S. zone system, G
10000 foot grid based on California (5)
rectangular coordinate system

CONTOUR INTERVAL 5 FEET
DATUM IS MEAN SEA LEVEL
FOR SALE BY U. S. GEOLOGICAL SURVEY, FEDERAL CENTER, DENVER, COLORADO, OR WASHINGTON 25, D. C.
A FOLDER DESCRIBING TOPOGRAPHIC MAPS AND SYMBOLS IS AVAILABLE ON REQUEST

U.S.G.S.
FILE COPY
Inspection and Marking.

REYNOLDS RANCH, CALIF.
Edition of 1950

First published in 1940
at scale of 1:31680
N 3537.5-W11937.5/7.5

NAME CHANGED TO LOST HILLS NW JAN 3 1951 3180