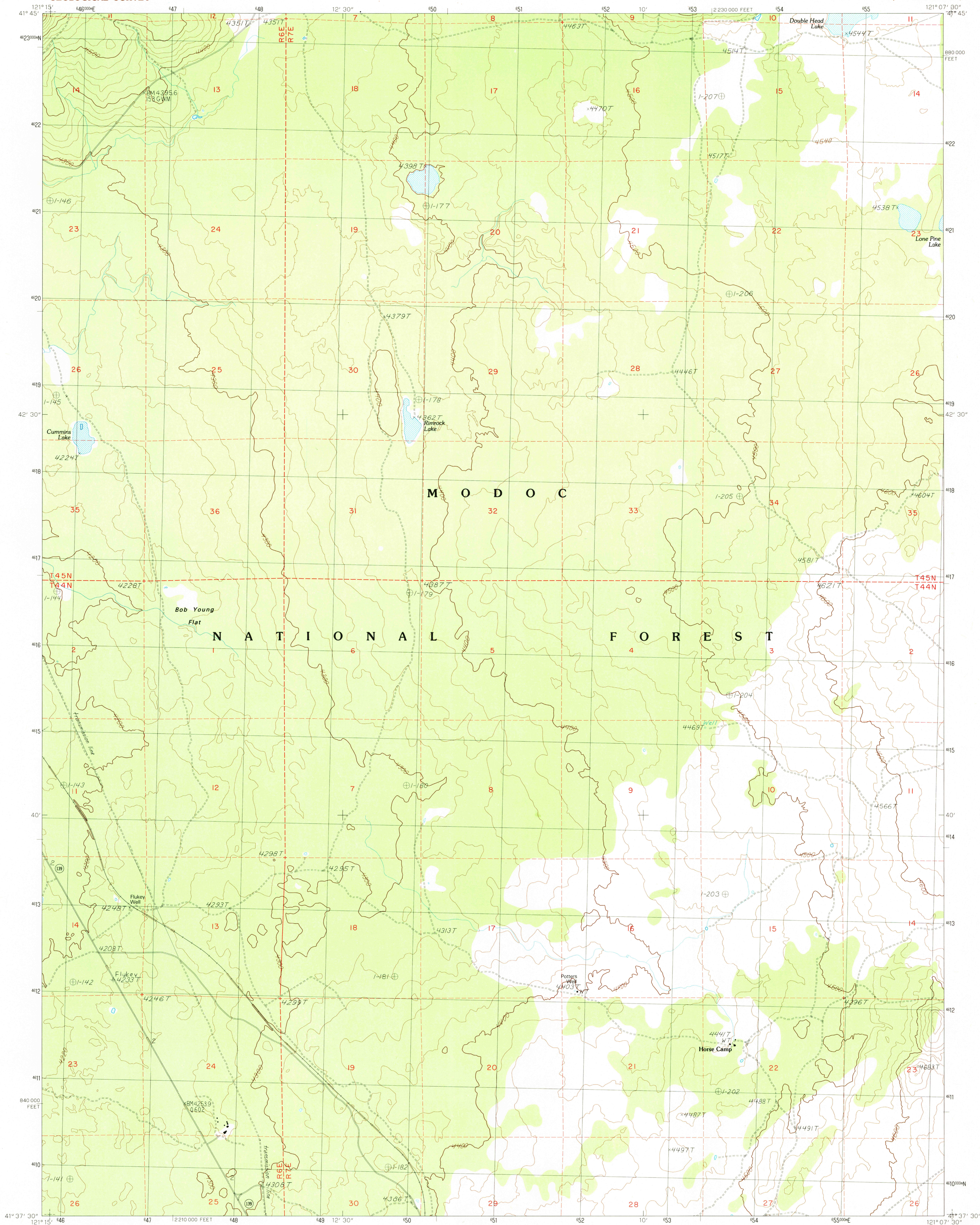


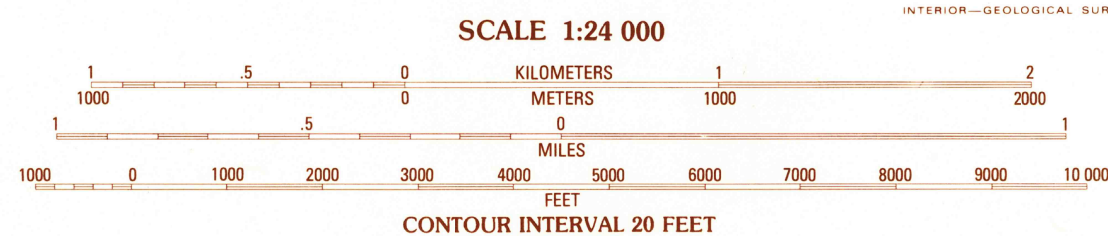
UNITED STATES
DEPARTMENT OF THE INTERIOR
GEOLOGICAL SURVEY

RIMROCK LAKE QUADRANGLE
CALIFORNIA—MODOC CO.
7.5 MINUTE SERIES (TOPOGRAPHIC)



PRODUCED BY THE UNITED STATES GEOLOGICAL SURVEY
CONTROL BY USGS, NOS/NOAA
COMPILED FROM AERIAL PHOTOGRAPHS TAKEN 1984
FIELD CHECKED 1986. MAP EDITED 1988
PROJECTION LAMBERT CONFORMAL CONIC
GRID: 1000-METER UNIVERSAL TRANSVERSE MERCATOR ZONE 10
1000-FOOT STATE GRID TICS CALIFORNIA, ZONE 1
UTM GRID DECLINATION 112° EAST
1980 MAGNETIC NORTH DECLINATION 1730° EAST
VERTICAL DATUM NATIONAL GEODETIC VERTICAL DATUM OF 1929
HORIZONTAL DATUM 1927 NORTH AMERICAN DATUM
To place on the predicted North American Datum of 1983,
move the projection lines as shown by dashed corner ticks
(18 meters north / 91 meters east)
There may be private inholdings within the boundaries of any
Federal and State Reservations shown on this map
No distinction made between houses, barns, and other buildings

PROVISIONAL MAP
Produced from original
manuscript drawings. Infor-
mation shown as of date of
photography.



THIS MAP COMPLIES WITH NATIONAL MAP ACCURACY STANDARDS
FOR SALE BY U.S. GEOLOGICAL SURVEY, DENVER, COLORADO 80225, OR RESTON, VIRGINIA 22092

ROAD LEGEND

Improved Road
Unimproved Road
Trail
Interstate Route
U.S. Route
State Route

QUADRANGLE LOCATION

ADJOINING 7.5' QUADRANGLE NAMES

1	2	3	4	5	6	7	8
1	2	3	4	5	6	7	8

RIMROCK LAKE, CALIF.
PROVISIONAL EDITION 1988
41121-F2-TF-024

USGS MIND HISTORICAL MAP
SEP 15 1988
REC'D FILE COPY