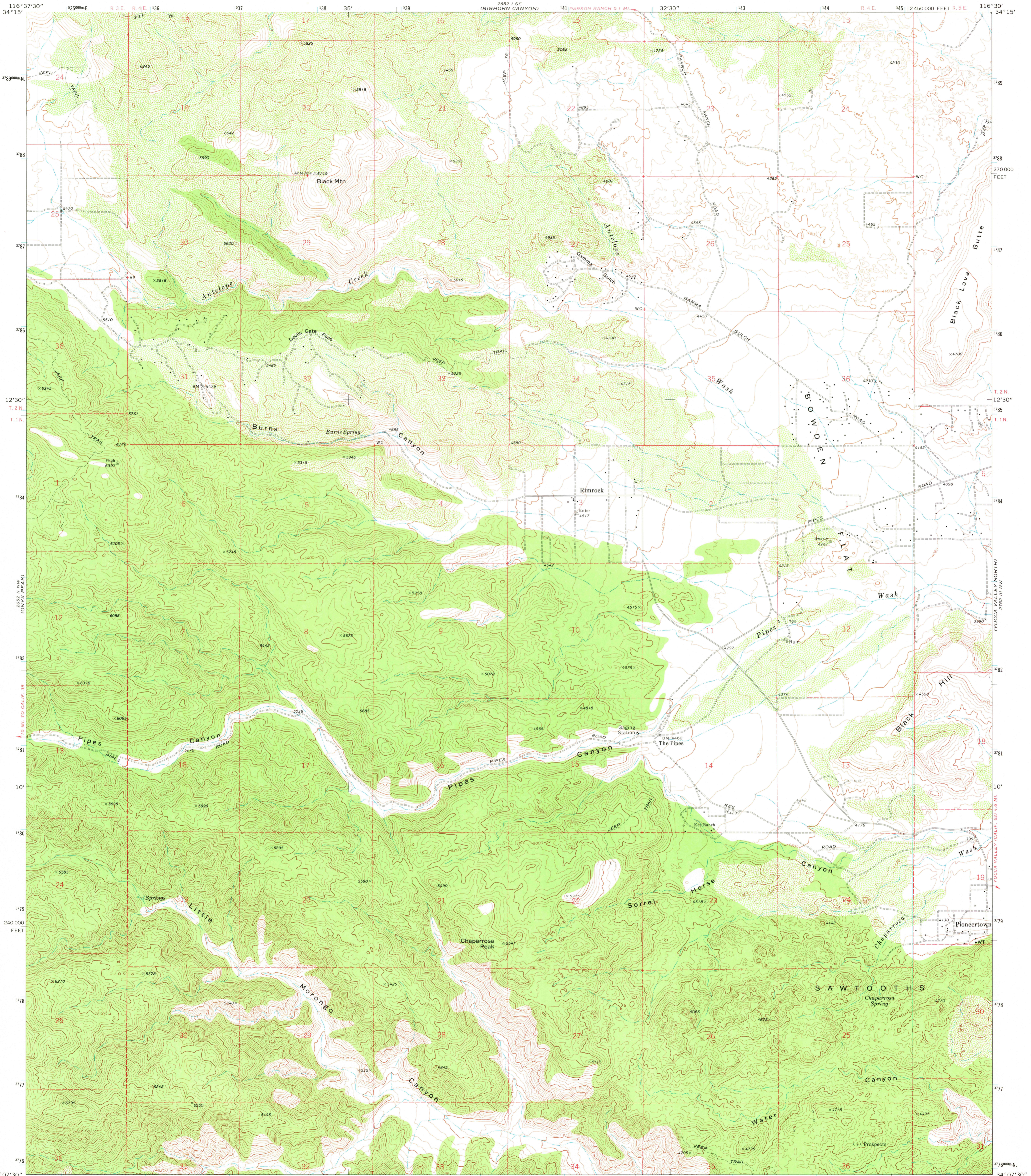
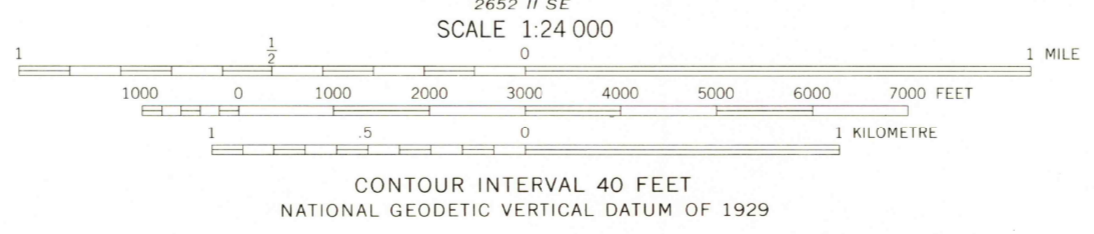
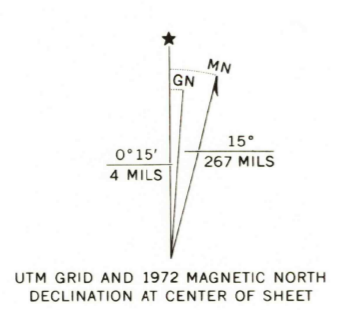


UNITED STATES
DEPARTMENT OF THE INTERIOR
GEOLOGICAL SURVEY

RIMROCK QUADRANGLE
CALIFORNIA—SAN BERNARDINO CO.
7.5 MINUTE SERIES (TOPOGRAPHIC)
NE 1/4 MORONGO VALLEY 15' QUADRANGLE



Mapped, edited, and published by the Geological Survey in cooperation with California Department of Water Resources Control by USGS, NOS/NOAA, and USCE
Topography by photogrammetric methods from aerial photographs taken 1970. Field checked 1972
Projection and 10,000-foot grid ticks: California coordinate system, zone 5 (Lambert conformal conic)
1000-metre Universal Transverse Mercator grid ticks, zone 11, shown in blue. 1927 North American datum
Where omitted, land lines have not been established



ROAD CLASSIFICATION

Primary highway, hard surface	Light-duty road, hard or improved surface
Secondary highway, hard surface	Unimproved road
Interstate Route	U. S. Route
	State Route



RIMROCK, CALIF.
NE 1/4 MORONGO VALLEY 15' QUADRANGLE
N3407.5—W11630/7.5

THIS MAP COMPLIES WITH NATIONAL MAP ACCURACY STANDARDS
FOR SALE BY U. S. GEOLOGICAL SURVEY, DENVER, COLORADO 80225, OR RESTON, VIRGINIA 22092
A FOLDER DESCRIBING TOPOGRAPHIC MAPS AND SYMBOLS IS AVAILABLE ON REQUEST

USGS
HISTORICAL FILE
TOPOGRAPHIC DIVISION

1972
AMS 2652 II NE—SERIES V895
AUG 25 1975