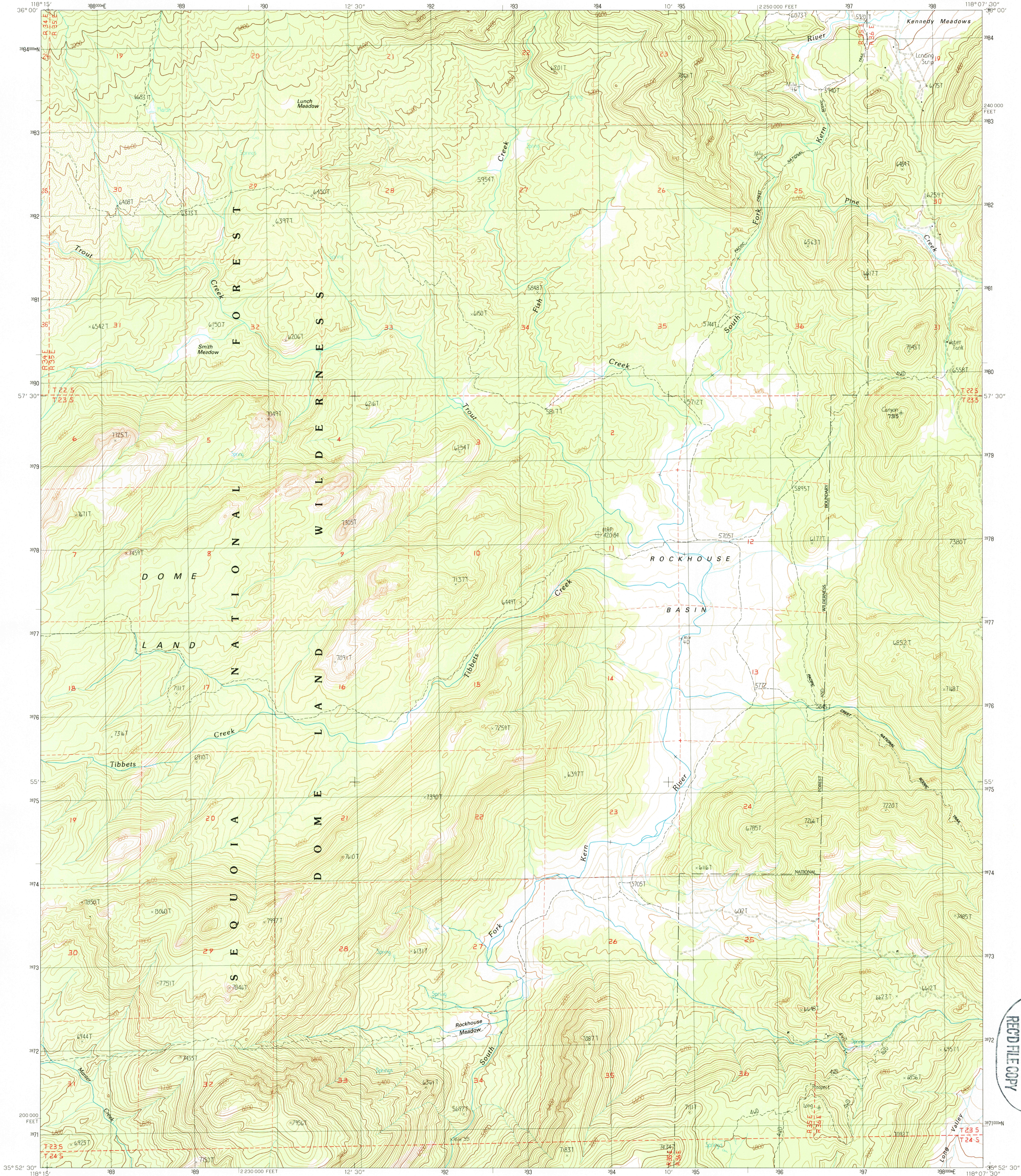


UNITED STATES
DEPARTMENT OF THE INTERIOR
GEOLOGICAL SURVEY

ROCKHOUSE BASIN QUADRANGLE
CALIFORNIA—TULARE CO.
7.5 MINUTE SERIES (TOPOGRAPHIC)



PRODUCED BY THE UNITED STATES GEOLOGICAL SURVEY
CONTROL BY USGS, NOS/NOAA
COMPILED FROM AERIAL PHOTOGRAPHS TAKEN 1983
FIELD CHECKED 1984. MAP EDITED
PROJECTION LAMBERT CONFORMAL CONIC
GRID: 1000-METER UNIVERSAL TRANSVERSE MERCATOR ZONE 11
10,000-FOOT STATE GRID TICS CALIFORNIA ZONE 4
UTM GRID DECLINATION 0°42' WEST
1980 MAGNETIC NORTH DECLINATION 15° EAST
VERTICAL DATUM NATIONAL GEODETIC VERTICAL DATUM OF 1929
HORIZONTAL DATUM 1927 NORTH AMERICAN DATUM
To place on the predicted North American Datum of 1983,
move the projection lines as shown by dashed corner ticks
(7 meters north / 83 meters east)
There may be private inholdings within the boundaries of any
Federal and State Reservations shown on this map
Where omitted, land lines have not been established or
are not shown because of insufficient data
No distinction made between houses, barns, and other buildings

PROVISIONAL MAP
Produced from original
manuscript drawings. Infor-
mation shown as of date of
photography. 1

SCALE 1:24 000
1 000 0 1000 2000
KILOMETERS
1 0 1000 2000
METERS
1 0 1000 2000
MILES
1000 0 1000 2000 3000 4000 5000 6000 7000 8000 9000 10 000
FEET
CONTOUR INTERVAL 40 FEET
To convert meters to feet multiply by 3.2808
To convert feet to meters multiply by 0.3048
THIS MAP COMPLIES WITH NATIONAL MAP ACCURACY STANDARDS
FOR SALE BY U. S. GEOLOGICAL SURVEY, DENVER, COLORADO 80225, OR RESTON, VIRGINIA 22092

QUADRANGLE LOCATION

1	2	3
4	5	6
7	8	

ADJOINING 7.5 QUADRANGLE NAMES

1 Bonita Meadows
2 Crag Peak
3 Long Canyon
4 Sierra Peak
5 Sacatar Canyon
6 Cannell Peak
7 White Dome
8 Lamont Peak

ROAD LEGEND
Improved Road
Unimproved Road
Trail
Interstate Route U.S. Route State Route
ROCKHOUSE BASIN, CALIF.
PROVISIONAL EDITION 1987
35118-H2-TF-024

USGS (MMD) HISTORICAL MAP
NOV 20 1987
REC'D FILE COPY