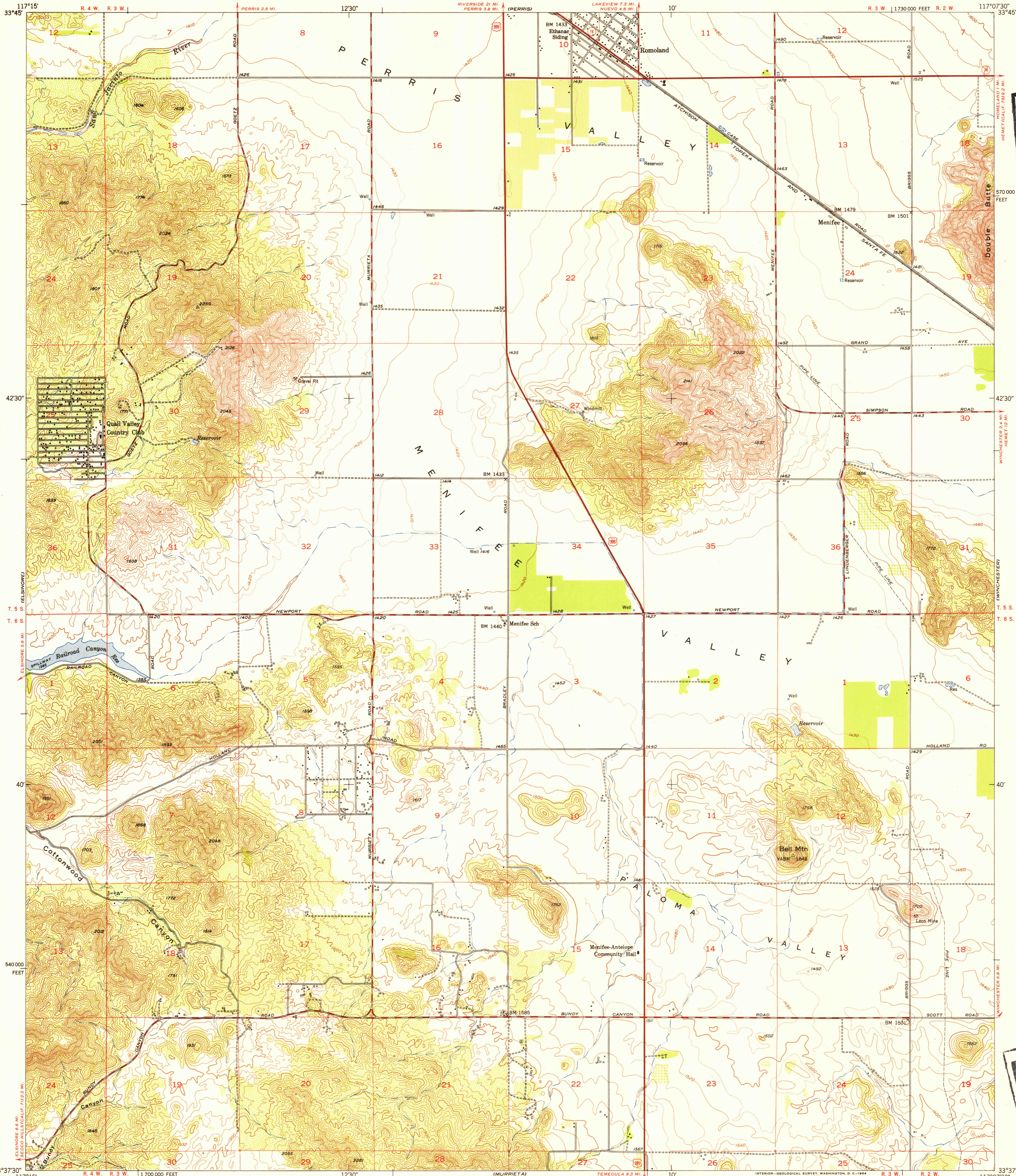


UNITED STATES
DEPARTMENT OF THE INTERIOR
GEOLOGICAL SURVEY

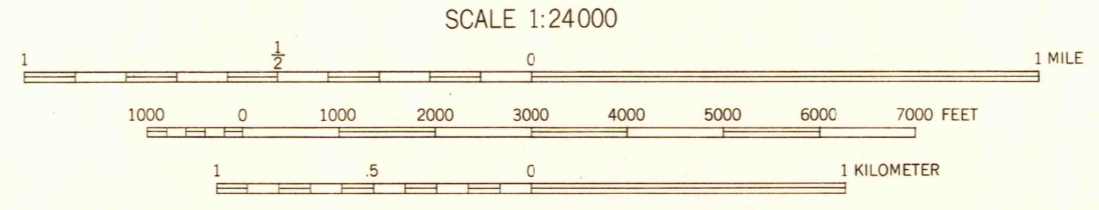
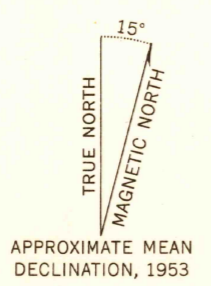
ROMOLAND QUADRANGLE
CALIFORNIA-RIVERSIDE CO.
7.5 MINUTE SERIES (TOPOGRAPHIC)
NW/4 MURRIETA 15' QUADRANGLE



FILE COPY

FILE COPY

Mapped, edited, and published by the Geological Survey
Control by USGS and USC&GS
Topography from aerial photographs by multiplex methods
and by plane-table surveys 1953. Aerial photographs taken 1951
Polyconic projection. 1927 North American datum
10,000-foot grid based on California coordinate system, zone 6
Unchecked elevations are shown in brown



CONTOUR INTERVAL 20 FEET
DOTTED LINES REPRESENT HALF-INTERVAL CONTOURS
DATUM IS MEAN SEA LEVEL

USGS
Historical File
Topographic Division

ROAD CLASSIFICATION
Heavy-duty 4 LANE 6 LANE Light-duty
Medium-duty 4 LANE 6 LANE Unimproved dirt
U. S. Route State Route



ROMOLAND, CALIF.
NW/4 MURRIETA 15' QUADRANGLE
N3337.5-W11707.5/7.5

FOR SALE BY U. S. GEOLOGICAL SURVEY, FEDERAL CENTER, DENVER, COLORADO OR WASHINGTON 25, D. C.
A FOLDER DESCRIBING TOPOGRAPHIC MAPS AND SYMBOLS IS AVAILABLE ON REQUEST

1953

JUL 2 1954