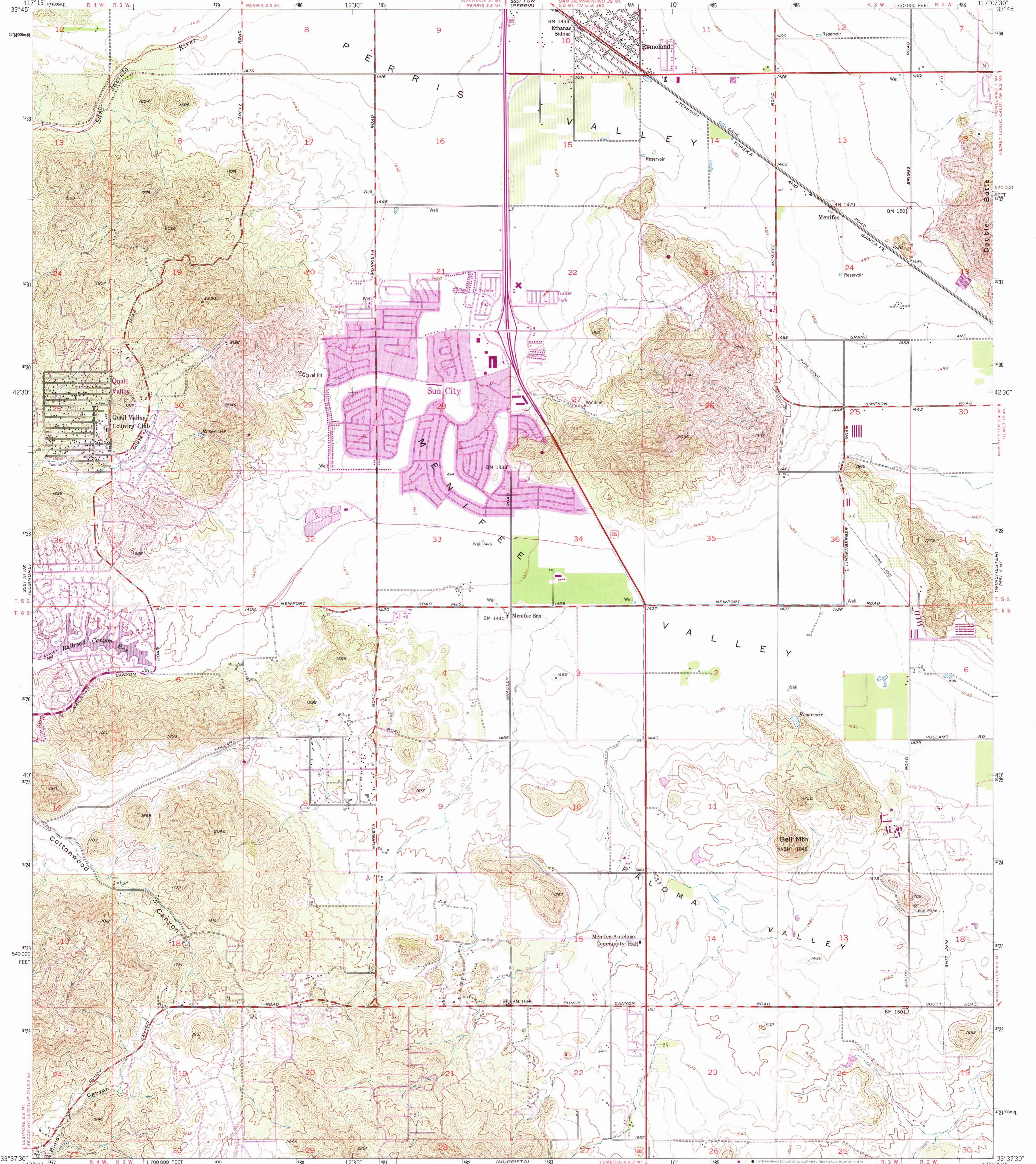


65751 V 5 E
65751 E 5 W

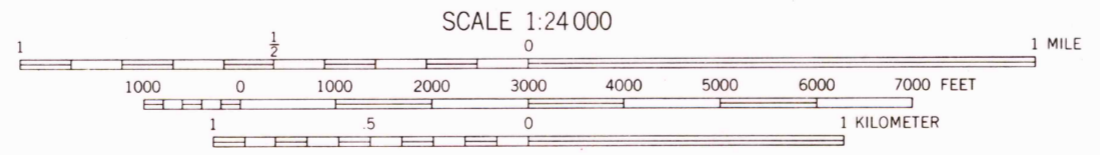
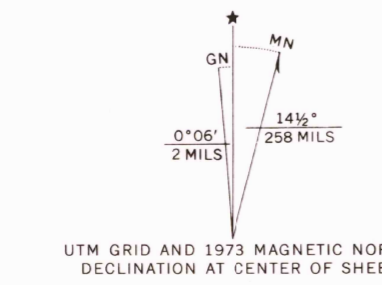
UNITED STATES
DEPARTMENT OF THE INTERIOR
GEOLOGICAL SURVEY

ROMOLAND QUADRANGLE
CALIFORNIA-RIVERSIDE CO.
7.5 MINUTE SERIES (TOPOGRAPHIC)

2551 I SW
(LAKESIDE)



Mapped, edited, and published by the Geological Survey
Control by USGS and USC&GS
Topography from aerial photographs by multiplex methods
and by plane-table surveys 1953. Aerial photographs taken 1951
Polyconic projection. 1927 North American datum
10,000-foot grid based on California coordinate system, zone 6
Unchecked elevations are shown in brown
1000-meter Universal Transverse Mercator grid ticks,
zone 11, shown in blue
Revisions shown in purple compiled from aerial photographs
taken 1973. This information not field checked
Purple tint indicates extension of urban area



SCALE 1:24,000
CONTOUR INTERVAL 20 FEET
DOTTED LINES REPRESENT HALF-INTERVAL CONTOURS
NATIONAL GEODETIC VERTICAL DATUM OF 1929

THIS MAP COMPLIES WITH NATIONAL MAP ACCURACY STANDARDS
FOR SALE BY U.S. GEOLOGICAL SURVEY, DENVER, COLORADO 80225, OR RESTON, VIRGINIA 22092
A FOLDER DESCRIBING TOPOGRAPHIC MAPS AND SYMBOLS IS AVAILABLE ON REQUEST

ROAD CLASSIFICATION

| | |
|-------------|-----------------|
| Heavy-duty | Light-duty |
| Medium-duty | Unimproved dirt |
| U.S. Route | State Route |



ROMOLAND, CALIF.

USGS
HISTORICAL FILE
TOPOGRAPHIC DIVISION

N3337.5-W11707.5/7.5
1953
PHOTOREVISED 1973
AMS 2551 I NW-SERIES V895

AUG 1 1975

6435