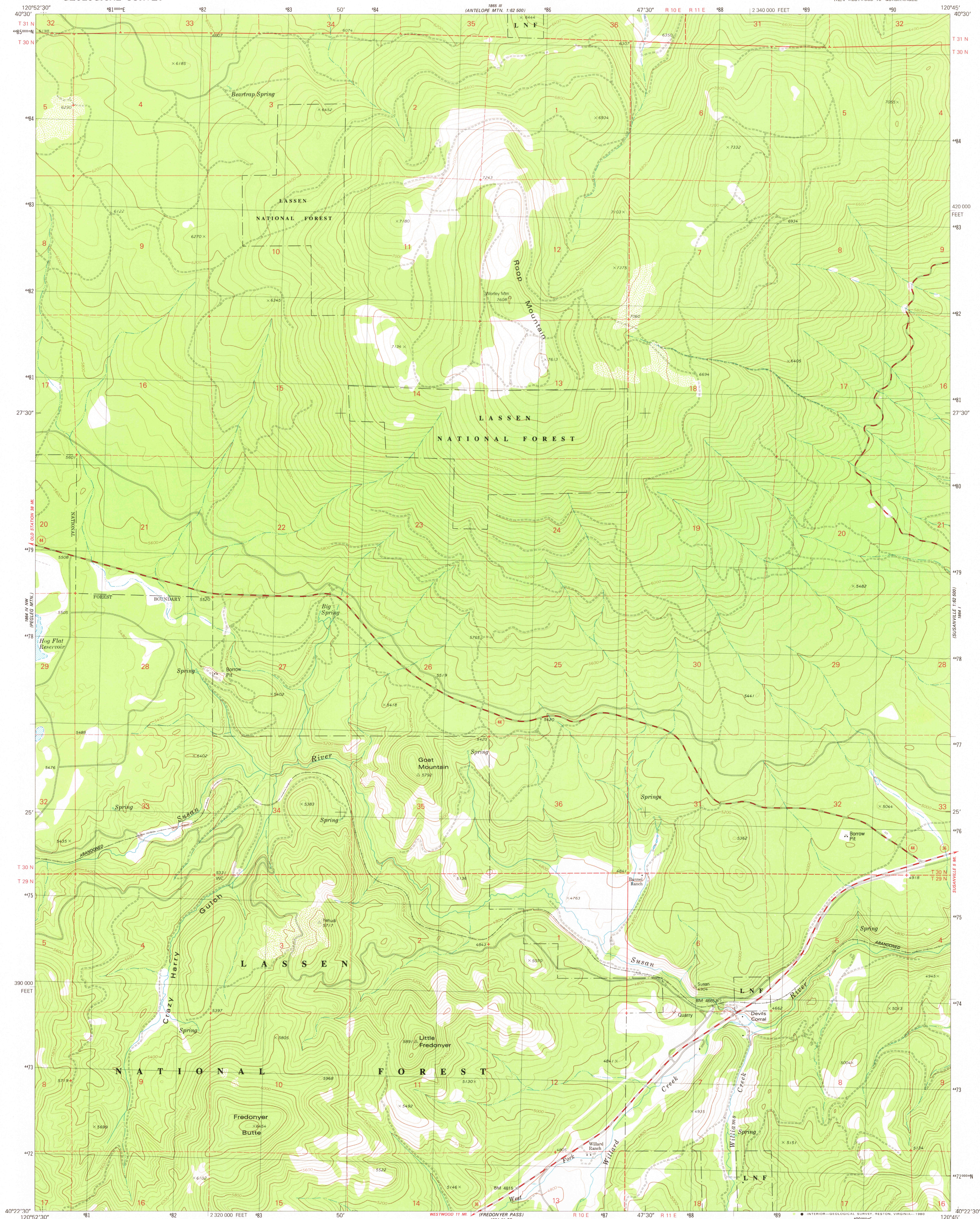


UNITED STATES  
DEPARTMENT OF THE INTERIOR  
GEOLOGICAL SURVEY

ROOP MOUNTAIN QUADRANGLE  
CALIFORNIA-LASSEN CO.  
7.5 MINUTE SERIES (TOPOGRAPHIC)  
NE/4 WESTWOOD 15' QUADRANGLE



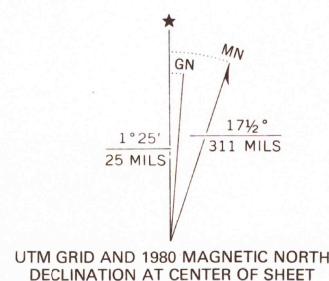
Mapped, edited, and published by the Geological Survey

Control by USGS and NOS/NOAA

Topography by photogrammetric methods from aerial photographs taken 1973. Field checked 1974. Map edited 1980.

Projection and 10,000-foot grid ticks: California coordinate system, zone 1 (Lambert conformal conic). 1000-meter Universal Transverse Mercator grid, zone 10 1927 North American Datum. To place on the predicted North American Datum 1983 move the projection lines 16 meters north and 89 meters east as shown by dashed corner ticks.

There may be private inholdings within the boundaries of the National or State reservations shown on this map.



SCALE 1:24,000  
1 0 1000 2000 3000 4000 5000 6000 7000 FEET  
1 0 5 10 KILOMETER  
CONTOUR INTERVAL 40 FEET  
SUPPLEMENTARY CONTOUR INTERVAL 20 FEET  
NATIONAL GEODETTIC VERTICAL DATUM OF 1929

THIS MAP COMPLIES WITH NATIONAL MAP ACCURACY STANDARDS  
FOR SALE BY U.S. GEOLOGICAL SURVEY, DENVER, COLORADO 80225, OR RESTON, VIRGINIA 22092  
A FOLDER DESCRIBING TOPOGRAPHIC MAPS AND SYMBOLS IS AVAILABLE ON REQUEST

ROAD CLASSIFICATION  
Primary highway, hard surface  
Secondary highway, hard surface  
Unimproved road  
Interstate Route  
U.S. Route  
State Route



USGS  
Historical File  
Topographic Division

ROOP MOUNTAIN, CALIF.  
NE/4 WESTWOOD 15' QUADRANGLE  
N4022.5-W12045.7.5

1980

DMA 1984 IV NE-SERIES V895

OCT 22 1980