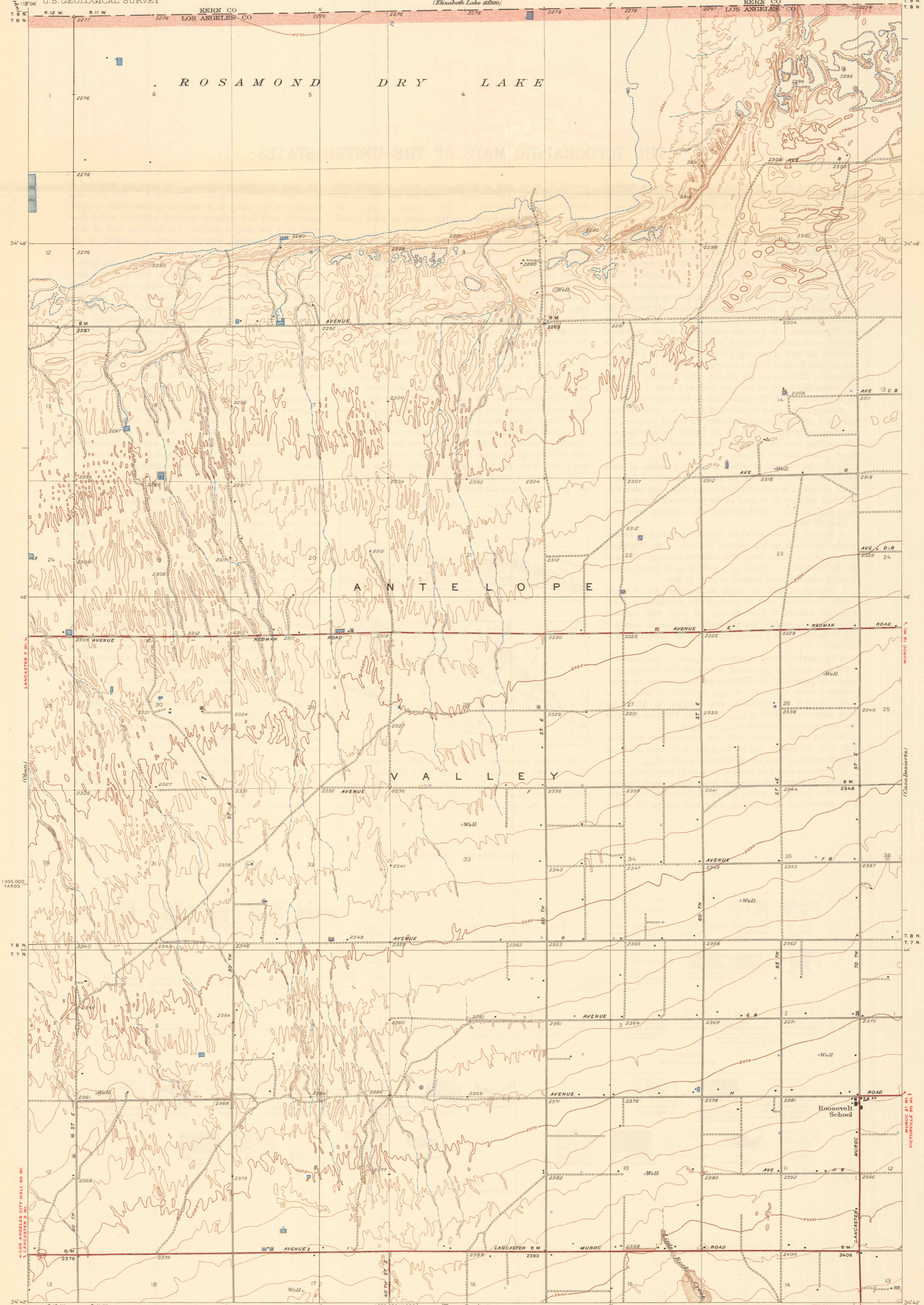


DEPARTMENT OF THE INTERIOR  
U.S. GEOLOGICAL SURVEY



1:300,000 YARDS  
T. 8 N.  
T. 7 N.  
34° 42'

118° 06' R. 12 W. R. 11 W.  
Topography by C. A. Stonesifer  
Control by U.S. Geological Survey  
Surveyed in 1930

1295,000 YARDS (Terra Bonita)  
Scale 1:250,000  
1 Mile  
5000 4000 3000 2000 1000 0 5000 Feet

Contour interval 5 feet  
Datum is mean sea level

118° 00' T. 9 N.  
T. 8 N.  
T. 7 N.  
34° 42'

118° 00' WILSONA 18 MI.  
Polyconic projection, North American datum  
5000 yard grid based upon U.S. zone system, G  
HARD IMPERVIOUSLY SURFACED ROADS  
OTHER MAIN TRAVELED ROADS  
INFORMATION FURNISHED BY LOS ANGELES COUNTY, 1932  
ROOSEVELT SCHOOL, CALIF.  
Edition of 1933

0 Miles  
1  
2  
3  
4  
5  
6  
7  
8  
9  
10  
11  
12  
13  
14  
15  
16  
17  
18  
19  
20  
21  
22  
23  
24  
25  
26  
27  
28  
29  
30  
31  
32  
33  
34  
35  
36  
37  
38  
39  
40  
41  
42  
43  
44  
45  
46  
47  
48  
49  
50  
51  
52  
53  
54  
55  
56  
57  
58  
59  
60  
61  
62  
63  
64  
65  
66  
67  
68  
69  
70  
71  
72  
73  
74  
75  
76  
77  
78  
79  
80  
81  
82  
83  
84  
85  
86  
87  
88  
89  
90  
91  
92  
93  
94  
95  
96  
97  
98  
99  
100