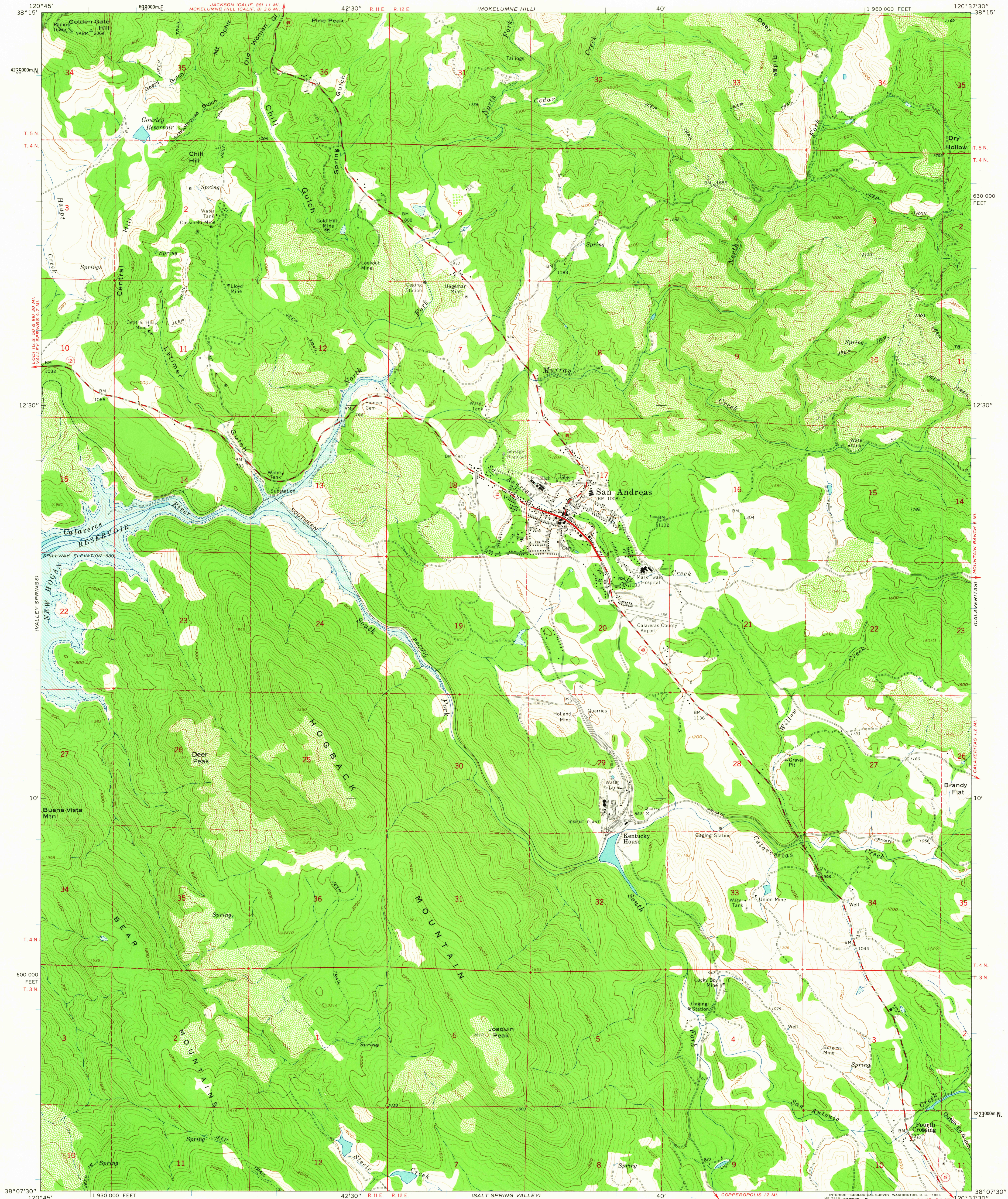
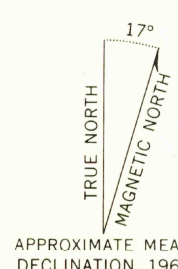


UNITED STATES
DEPARTMENT OF THE INTERIOR
GEOLOGICAL SURVEY

SAN ANDREAS QUADRANGLE
CALIFORNIA—CALAVERAS CO.
7.5 MINUTE SERIES (TOPOGRAPHIC)
NW 1/4 SAN ANDREAS 15' QUADRANGLE



Mapped, edited, and published by the Geological Survey
in cooperation with California Department of Water Resources
Control by USGS and USC&GS
Topography by photogrammetric methods from aerial
photographs taken 1959. Field checked 1962
Polyconic projection. 1927 North American datum
10,000-foot grid based on California coordinate system, zone 3
1000-meter Universal Transverse Mercator grid ticks,
zone 10, shown in blue
Where omitted, land lines have not been established
Area covered by dashed light-blue pattern
is subject to controlled inundation
Blue hatching indicates area to be submerged by
New Hogan Reservoir at elevation 680 feet



SCALE 1:24,000
1000 0 1000 2000 3000 4000 5000 6000 7000 FEET
1 KILOMETER
CONTOUR INTERVAL 40 FEET
DATUM IS MEAN SEA LEVEL

THIS MAP COMPLIES WITH NATIONAL MAP ACCURACY STANDARDS
FOR SALE BY U.S. GEOLOGICAL SURVEY, DENVER 25, COLORADO OR WASHINGTON 25, D. C.
A FOLDER DESCRIBING TOPOGRAPHIC MAPS AND SYMBOLS IS AVAILABLE ON REQUEST

USGS
Historical File
Topographic Division



ROAD CLASSIFICATION
Heavy-duty ——— Light-duty ———
Medium-duty ——— Unimproved dirt ———
○ State Route

USGS
FILE OUT
TOPOGRAPHIC DIVISION
SAN ANDREAS, CALIF.
NW 1/4 SAN ANDREAS 15' QUADRANGLE
N3807.5—W12037.5/7.5
1962

SEP 23 1963
SEP 23 1963

3145