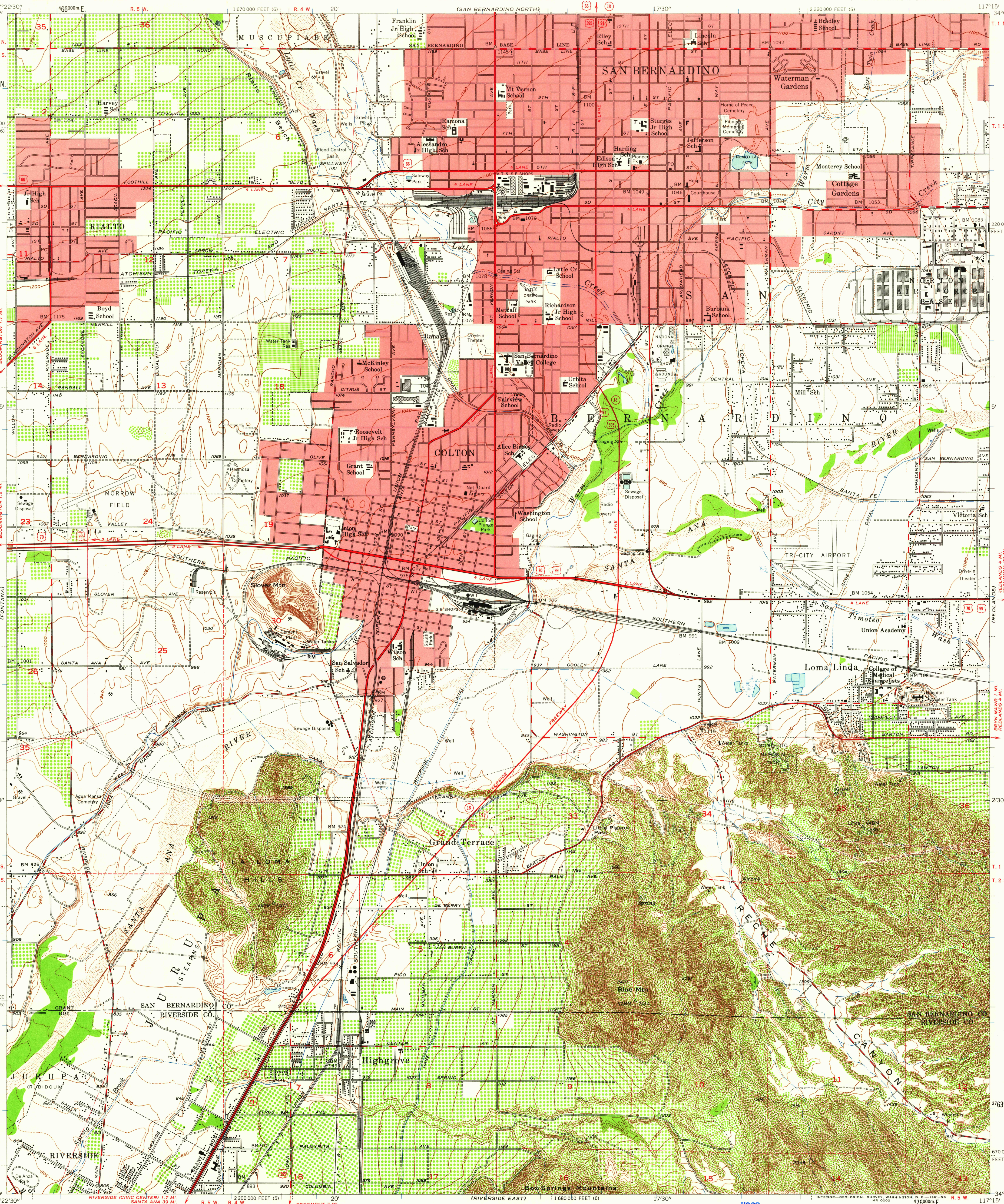


UNITED STATES DEPARTMENT OF THE INTERIOR GEOLOGICAL SURVEY
STATE OF CALIFORNIA DIRECTOR OF PUBLIC WORKS
SAN BERNARDINO SOUTH QUADRANGLE CALIFORNIA 7.5 MINUTE SERIES (TOPOGRAPHIC)
SE/4 SAN BERNARDINO 15' QUADRANGLE



Mapped, edited, and published by the Geological Survey
Control by USGS and USC&GS
Topography by planetable surveys 1936-38, and by multiplex methods
Culture and drainage compiled from aerial photographs taken 1952
Contour revision and field check 1954
Polyconic projection. 1927 North American datum
10,000-foot grids based on California coordinate system, zones 5 and 6
Red tint indicates areas in which only landmark buildings are shown
Dashed land lines indicate approximate locations
Unchecked elevations are shown in brown
1000-meter Universal Transverse Mercator grid ticks, zone 11, shown in blue

USGS
Historical File
Topographic Division

ROAD CLASSIFICATION
Heavy-duty ——— Light-duty ———
Medium-duty ——— Unimproved dirt ———
U.S. Route ——— State Route ———

USGS. SAN BERNARDINO SOUTH, CALIF.
SE/4 SAN BERNARDINO 15' QUADRANGLE
N 3400—W 11715/7.5
1954

THIS MAP COMPLIES WITH NATIONAL MAP ACCURACY STANDARDS
FOR SALE BY U. S. GEOLOGICAL SURVEY, DENVER 25, COLORADO OR WASHINGTON 25, D. C.
A FOLDER DESCRIBING TOPOGRAPHIC MAPS AND SYMBOLS IS AVAILABLE ON REQUEST