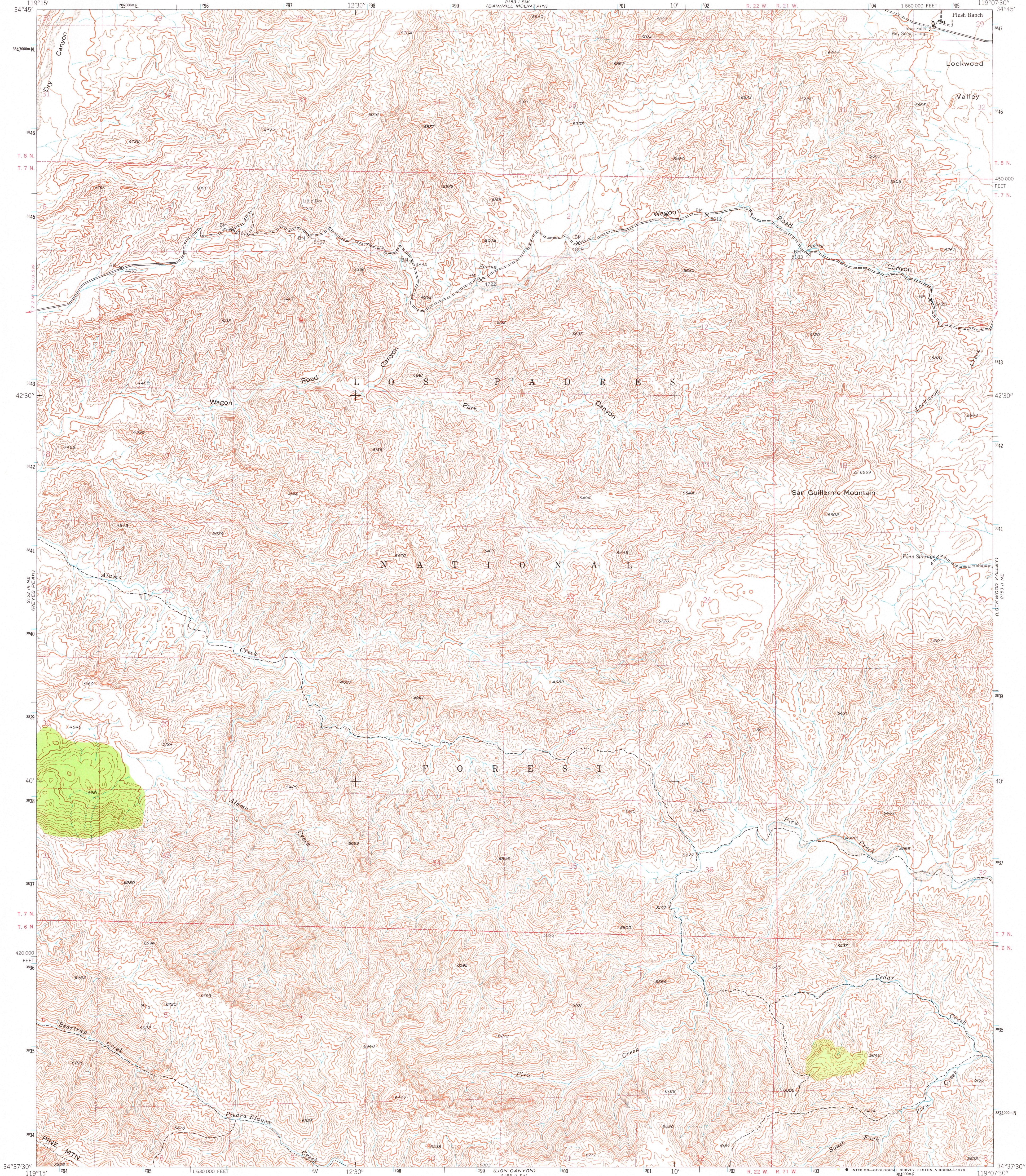


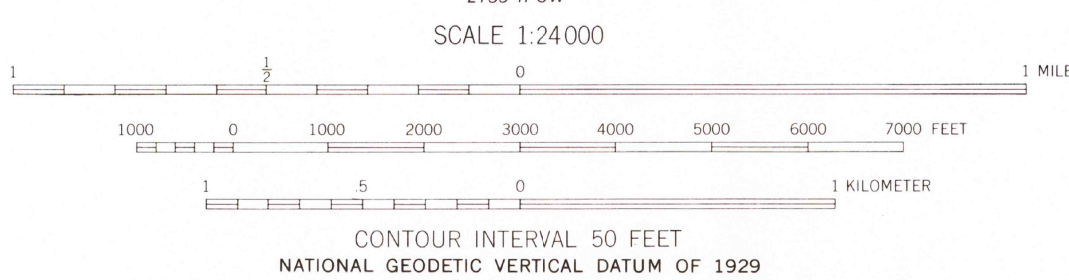
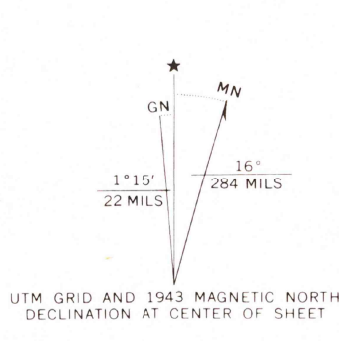
UNITED STATES
DEPARTMENT OF THE INTERIOR
GEOLOGICAL SURVEY

UNITED STATES
DEPARTMENT OF THE ARMY
CORPS OF ENGINEERS

SAN GUILLERMO QUADRANGLE
CALIFORNIA—VENTURA CO.
7.5 MINUTE SERIES (TOPOGRAPHIC)



Map by the Army Map Service
Published for civil use by the Geological Survey
Control by USGS, USC&GS, and USFS
Topography from aerial photographs by photogrammetric methods
Aerial photographs taken 1942. Field check 1943
Polyconic projection. 1927 North American datum
10,000-foot grid based on California coordinate system, zone 5
1000-meter Universal Transverse Mercator grid ticks,
zone 11, shown in blue
Dashed land lines indicate approximate locations



ROAD CLASSIFICATION
Light-duty ————— Unimproved dirt —————

USGS
HISTORICAL FILE
TOPOGRAPHIC DIVISION

SAN GUILLERMO CALIF.
N3437.5—W11907.5/7.5

1943
PHOTOINSPECTED 1971
AMS 2153 II NW—SERIES V895

FEB 16 1978

6900

THIS NOTE SHOULD HAVE BEEN IN RED

THIS MAP COMPLIES WITH NATIONAL MAP ACCURACY STANDARDS
FOR SALE BY U. S. GEOLOGICAL SURVEY, DENVER, COLORADO 80225, OR RESTON, VIRGINIA 22092
A FOLDER DESCRIBING TOPOGRAPHIC MAPS AND SYMBOLS IS AVAILABLE ON REQUEST

THIS NOTE SHOULD HAVE BEEN IN RED