

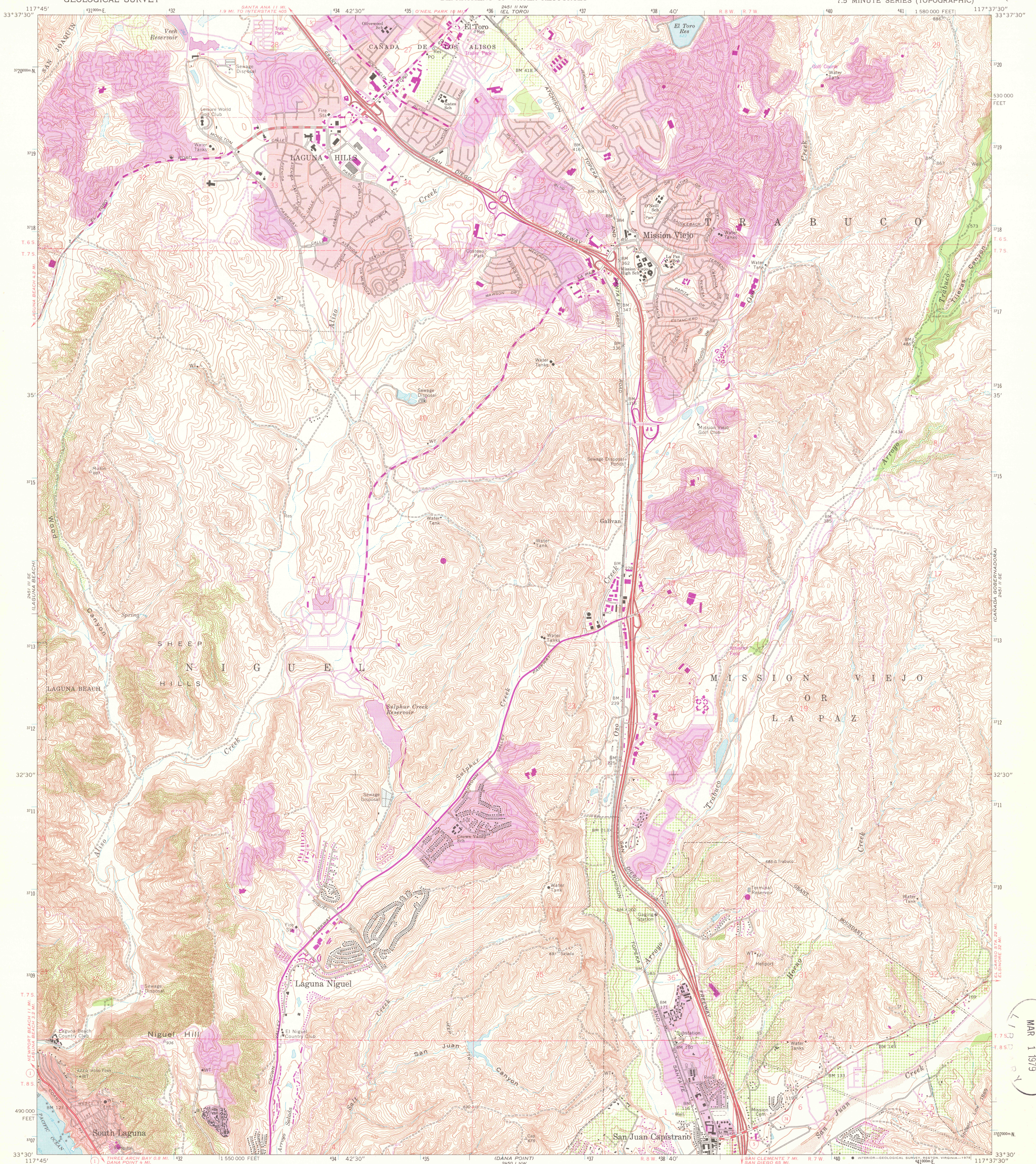
240 11 NE
173750

UNITED STATES
DEPARTMENT OF THE INTERIOR
GEOLOGICAL SURVEY

STATE OF CALIFORNIA
DEPARTMENT OF WATER RESOURCES

SAN JUAN CAPISTRANO QUADRANGLE
CALIFORNIA—ORANGE CO.
7.5 MINUTE SERIES (TOPOGRAPHIC)

240 11 NE
173750
(SANTIAGO PEAK)



Mapped, edited, and published by the Geological Survey

Control by USGS, NOS/NOAA, and USCE

Topography by photogrammetric methods from aerial photographs taken 1946. Field checked 1948. Revised from aerial photographs taken 1967. Field checked 1968

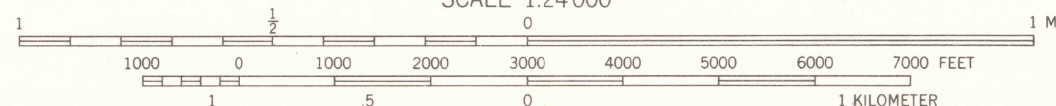
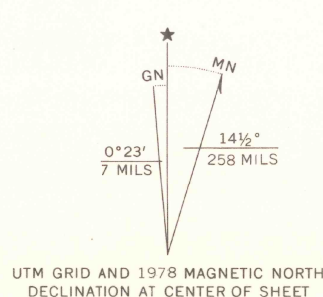
Selected hydrographic data compiled from NOS/NOAA Chart 5142 (1968). This information is not intended for navigational purposes

Polyconic projection. 1927 North American datum. 10,000-foot grid based on California coordinate system, zone 6. 1000-meter Universal Transverse Mercator grid ticks, zone 11, shown in blue

Red tint indicates areas in which only landmark buildings are shown

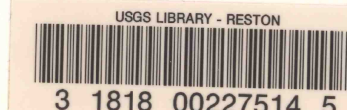
Dotted land lines established by private survey

Fine red dashed lines indicate selected fence lines



CONTOUR INTERVAL 20 FEET
NATIONAL GEODETIC VERTICAL DATUM OF 1929
DEPTH CURVES IN FEET—DATUM IS MEAN LOWER LOW WATER
SHORELINE SHOWN REPRESENTS THE APPROXIMATE LINE OF MEAN HIGH WATER
THE MEAN RANGE OF TIDE IS APPROXIMATELY 4 FEET

THIS MAP COMPLIES WITH NATIONAL MAP ACCURACY STANDARDS
FOR SALE BY U.S. GEOLOGICAL SURVEY, DENVER, COLORADO 80225, OR RESTON, VIRGINIA 22092
A FOLDER DESCRIBING TOPOGRAPHIC MAPS AND SYMBOLS IS AVAILABLE ON REQUEST



ROAD CLASSIFICATION	
Heavy-duty	Light-duty
Medium-duty	Unimproved dirt
Interstate Route	State Route

SAN JUAN CAPISTRANO, CALIF.
N3330—W11737.5/7.5

1968
PHOTOREVISED 1978
AMS 2451 II SW—SERIES V895

MAR 1 1979