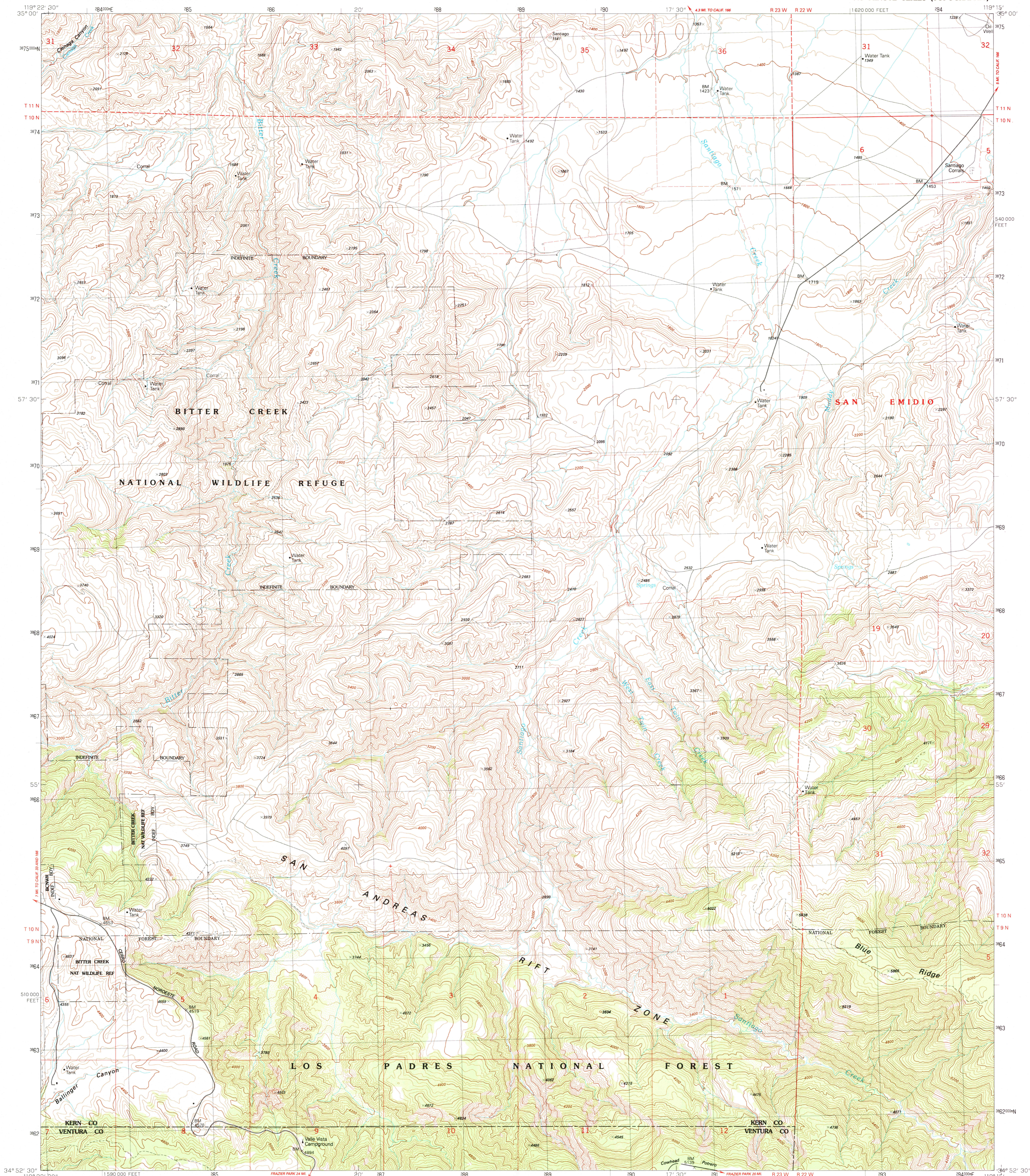


DEPARTMENT OF THE INTERIOR
UNITED STATES GEOLOGICAL SURVEY

SANTIAGO CREEK QUADRANGLE
CALIFORNIA
7.5 MINUTE SERIES (TOPOGRAPHIC)



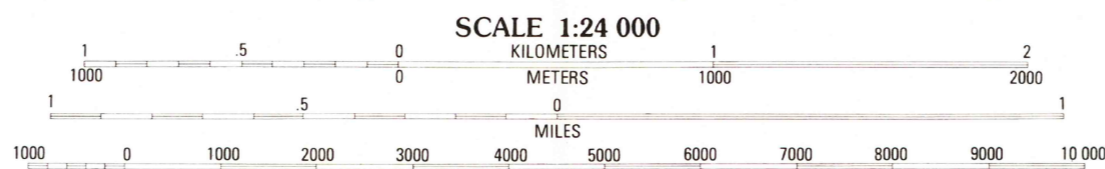
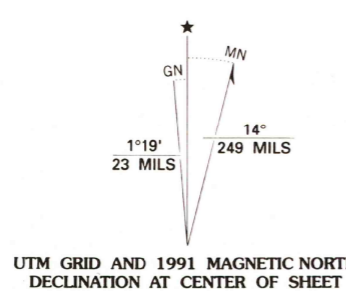
Produced by the United States Geological Survey
Control by USGS, NOS/NOAA, and USDA

Compiled from aerial photographs taken 1987
Field checked 1988. Map edited 1991

North American Datum of 1927 (NAD 27). Projection and
10 000-foot grid ticks: California Coordinate System, zone 5
(Lambert Conformal Conic). 1000-meter Universal Transverse
Mercator grid, zone 11

The difference between NAD 83 and North American Datum of
1927 (NAD 27) for 7.5 minute intersections is given in USGS
Bulletin 1875. The NAD 27 is shown by dashed corner ticks

There may be private inholdings within the boundaries of the
National or State reservations shown on this map
Fine red dashed lines indicate selected fence and field lines where
generally visible on aerial photographs. This information is
unchecked
Certain land lines are omitted because of insufficient data



CONTOUR INTERVAL 40 FEET
NATIONAL GEODETIC VERTICAL DATUM OF 1929
TO CONVERT FEET TO METERS MULTIPLY BY 0.3048
TO CONVERT METERS TO FEET MULTIPLY BY 3.2808

THIS MAP COMPLIES WITH NATIONAL MAP ACCURACY STANDARDS
FOR SALE BY U.S. GEOLOGICAL SURVEY
DENVER, COLORADO 80225 OR RESTON, VIRGINIA 22092

A FOLDER DESCRIBING TOPOGRAPHIC MAPS AND SYMBOLS IS AVAILABLE ON REQUEST



QUADRANGLE LOCATION

1	2	3	1 Maricopa
2	3	4	2 Foothill
3	4	5	3 Conner SW
4	5	6	4 Ballinger Canyon
5	6	7	5 Eagle Rock Peak
6	7	8	6 Caperna Peak
			7 Apache Canyon
			8 Sawmill Mountain

ADJOINING 7.5' QUADRANGLE NAMES

ROAD CLASSIFICATION	
Primary highway, hard surface	Light-duty road, hard or improved surface
Secondary highway, hard surface	Unimproved road
Interstate Route	U. S. Route
	State Route

SANTIAGO CREEK, CALIF.

34119-H3-TF-024

1991

DMA 2153 IV NE-SERIES V895

