

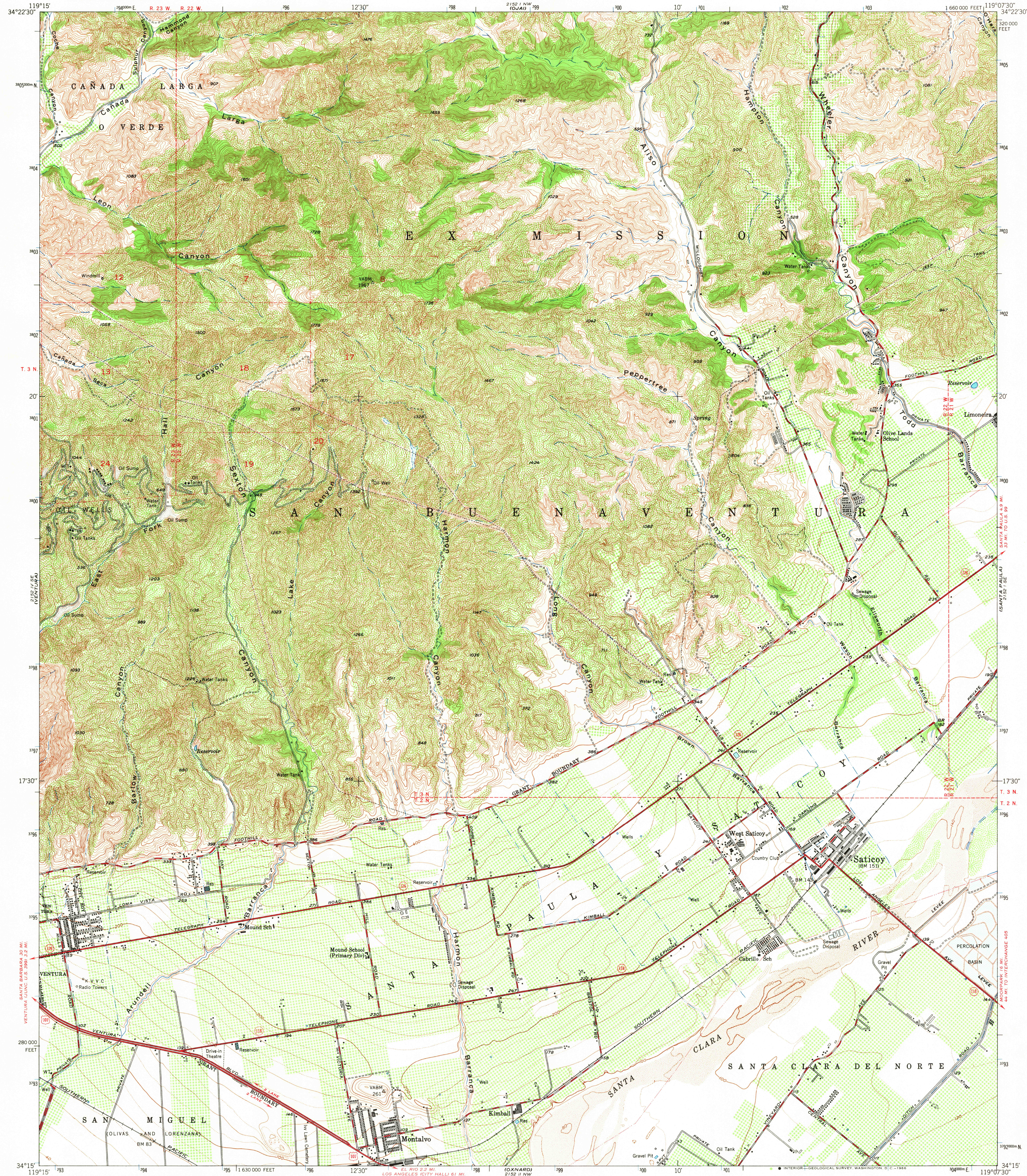
2152 1 SW  
(MUTUAL)

UNITED STATES  
DEPARTMENT OF THE INTERIOR  
GEOLOGICAL SURVEY

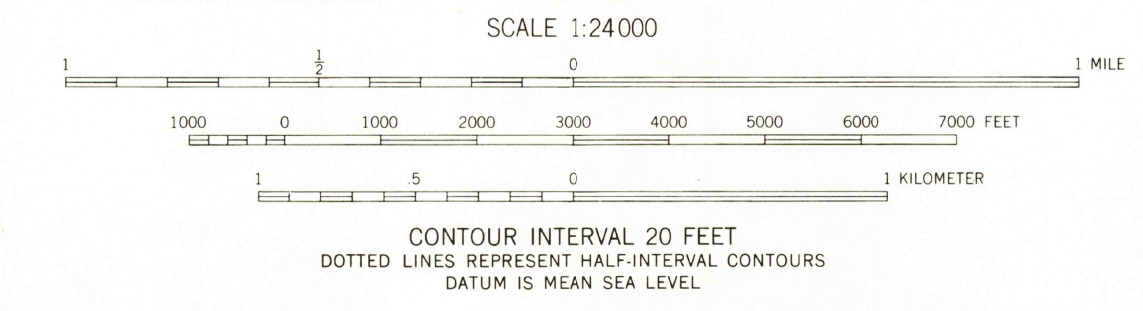
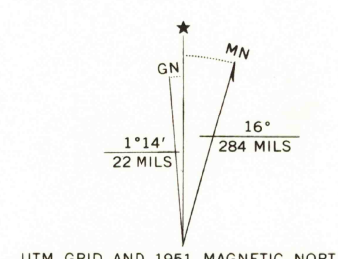
STATE OF CALIFORNIA  
REPRESENTED BY THE  
DIRECTOR OF PUBLIC WORKS

SATICOY QUADRANGLE  
CALIFORNIA-VENTURA CO.  
7.5 MINUTE SERIES (TOPOGRAPHIC)  
SW/4 SANTA PAULA 15' QUADRANGLE

2152 1 NW  
(SANTA PAULA PLAIN)



Maped, edited, and published by the Geological Survey  
Control by USGS and USC&GS  
Topography from aerial photographs by multiplex methods  
and by plane-table surveys 1951. Aerial photographs taken 1947  
Polyconic projection. 1927 North American datum  
10,000-foot grid based on California coordinate system, zone 5  
1000-meter Universal Transverse Mercator grid ticks,  
zone 11, shown in blue



THIS MAP COMPLIES WITH NATIONAL MAP ACCURACY STANDARDS  
FOR SALE BY U.S. GEOLOGICAL SURVEY, DENVER, COLORADO 80225, OR WASHINGTON, D.C. 20242  
A FOLDER DESCRIBING TOPOGRAPHIC MAPS AND SYMBOLS IS AVAILABLE ON REQUEST

USGS  
Historical File  
Topographic Division

ROAD CLASSIFICATION  
Heavy-duty ——— Light-duty ———  
Medium-duty ——— Unimproved dirt ———  
U.S. Route ——— State Route ———



U.S.G.S.  
TOPOGRAPHIC DIVISION

SATICOY, CALIF.  
SW/4 SANTA PAULA 15' QUADRANGLE  
N3415-W11907.5/7.5  
1951

AMS 2152 1 SW—SERIES V895

5170