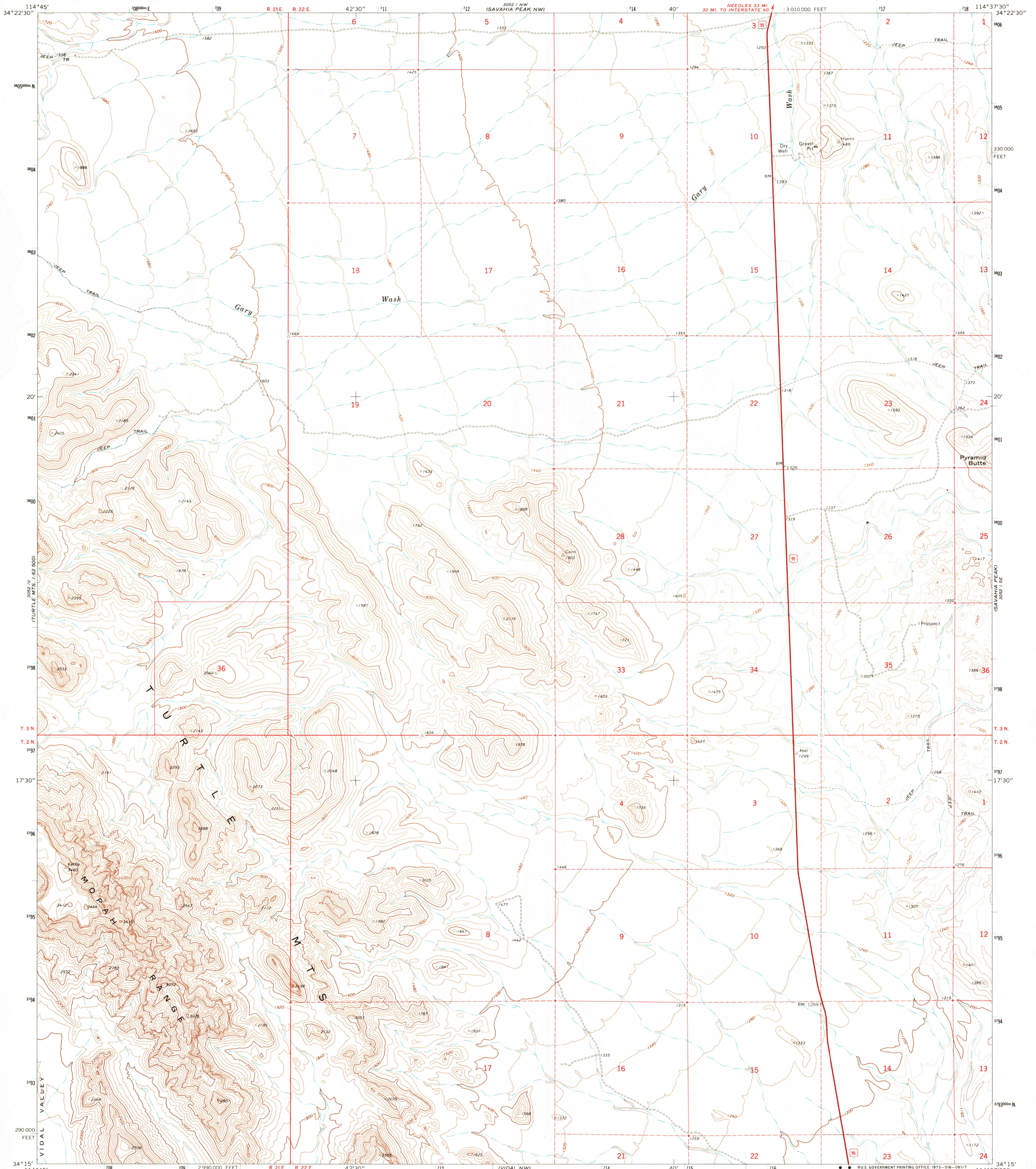
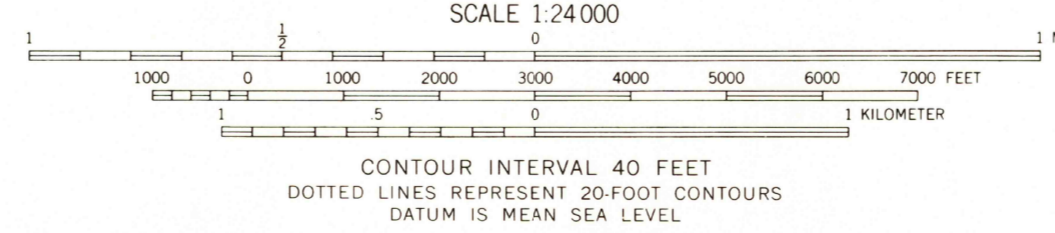
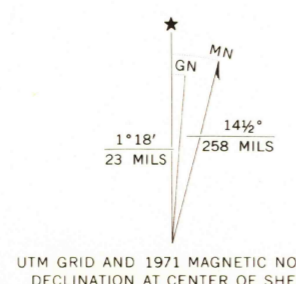


UNITED STATES  
DEPARTMENT OF THE INTERIOR  
GEOLOGICAL SURVEY

SAVAHIA PEAK SW QUADRANGLE  
CALIFORNIA—SAN BERNARDINO CO.  
7.5 MINUTE SERIES (TOPOGRAPHIC)  
SW/4 SAVAHIA PEAK 15' QUADRANGLE



Mapped, edited and published by the Geological Survey  
Control by USGS and USC&GS  
Topography by photogrammetric methods from aerial photographs taken 1970. Field checked 1971  
Projection and 10,000-foot grid ticks: California coordinate system, zone 5 (Lambert conformal conic)  
1000-meter Universal Transverse Mercator grid ticks, zone 11, shown in blue. 1927 North American datum  
Where omitted, land lines have not been established



CONTOUR INTERVAL 40 FEET  
DOTTED LINES REPRESENT 20-FOOT CONTOURS  
DATUM IS MEAN SEA LEVEL



ROAD CLASSIFICATION  
Primary highway, hard surface ——— Light-duty road, hard or improved surface ———  
Secondary highway, hard surface ——— Unimproved road ———  
○ Interstate Route ○ U. S. Route ○ State Route

THIS MAP COMPLIES WITH NATIONAL MAP ACCURACY STANDARDS  
FOR SALE BY U. S. GEOLOGICAL SURVEY, DENVER, COLORADO 80225, OR WASHINGTON, D. C. 20242  
A FOLDER DESCRIBING TOPOGRAPHIC MAPS AND SYMBOLS IS AVAILABLE ON REQUEST

1 3 AUG 1973  
SAVAHIA PEAK SW, CALIF.  
SW/4 SAVAHIA PEAK 15' QUADRANGLE  
N3415—W11437.5/7.5  
1971  
AMS 3052 1 SW—SERIES V895

3052 1 NW  
TURTLE MTS.

3052 1 NE  
SAVAHIA PEAK NW

3052 1 SW  
TURTLE MTS.

3052 1 SE  
SAVAHIA PEAK

VIDAL JUNCTION  
3052 1 E