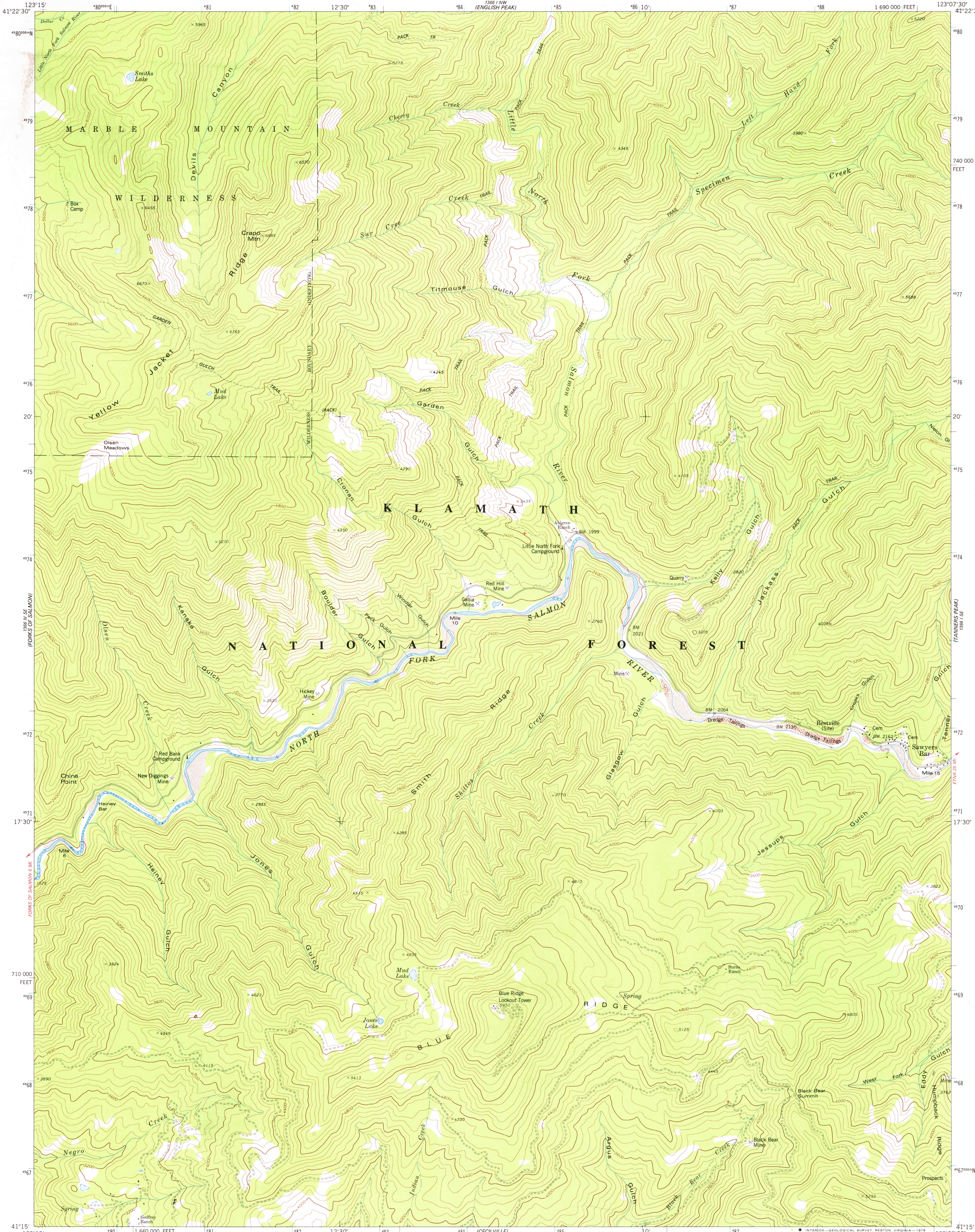


UNITED STATES
DEPARTMENT OF THE INTERIOR
GEOLOGICAL SURVEY



SAWYERS BAR QUADRANGLE
CALIFORNIA-SISKIYOU CO.
7.5 MINUTE SERIES (TOPOGRAPHIC)
SW/4 SAWYERS BAR 15' QUADRANGLE

1366' N.E.
1366' N.E.
YELLOW DOG PEAK



Mapped, edited, and published by the Geological Survey

Control by USGS and NOS/NOAA

Topography by photogrammetric methods from aerial photographs taken 1972-73. Field checked 1974. Map edited 1979

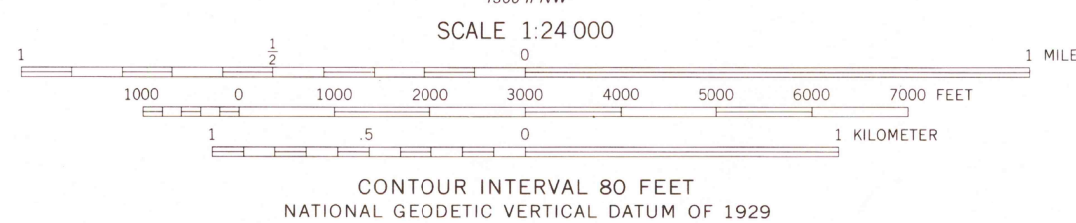
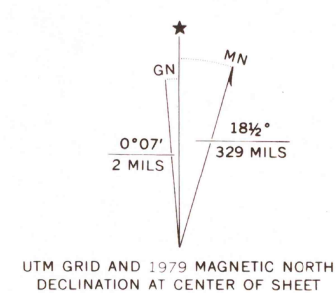
Projection and 10,000-foot grid ticks: California coordinate system, zone 1 (Lambert conformal conic)

1000-meter Universal Transverse Mercator grid ticks, zone 10, shown in blue. 1927 North American Datum

To place on the predicted North American Datum 1983 move the projection lines 20 meters north and 95 meters east as shown by dashed corner ticks

Land lines are omitted because of insufficient data

There may be private inholdings within the boundaries of the National or State reservations shown on this map



ROAD CLASSIFICATION	
Primary highway, hard surface	Light-duty road, hard or improved surface
Secondary highway, hard surface	Unimproved road
Interstate Route	U.S. Route
	State Route

USGS
Historical File
Topographic Division

SAWYERS BAR, CALIF.
SW/4 SAWYERS BAR 15' QUADRANGLE
N4115-W12307.5/7.5

1979

DMA 1366 I SW-SERIES V895

FOR SALE BY U.S. GEOLOGICAL SURVEY, DENVER, COLORADO 80225, OR RESTON, VIRGINIA 22092
A FOLDER DESCRIBING TOPOGRAPHIC MAPS AND SYMBOLS IS AVAILABLE ON REQUEST

SEP 20 1979

3100