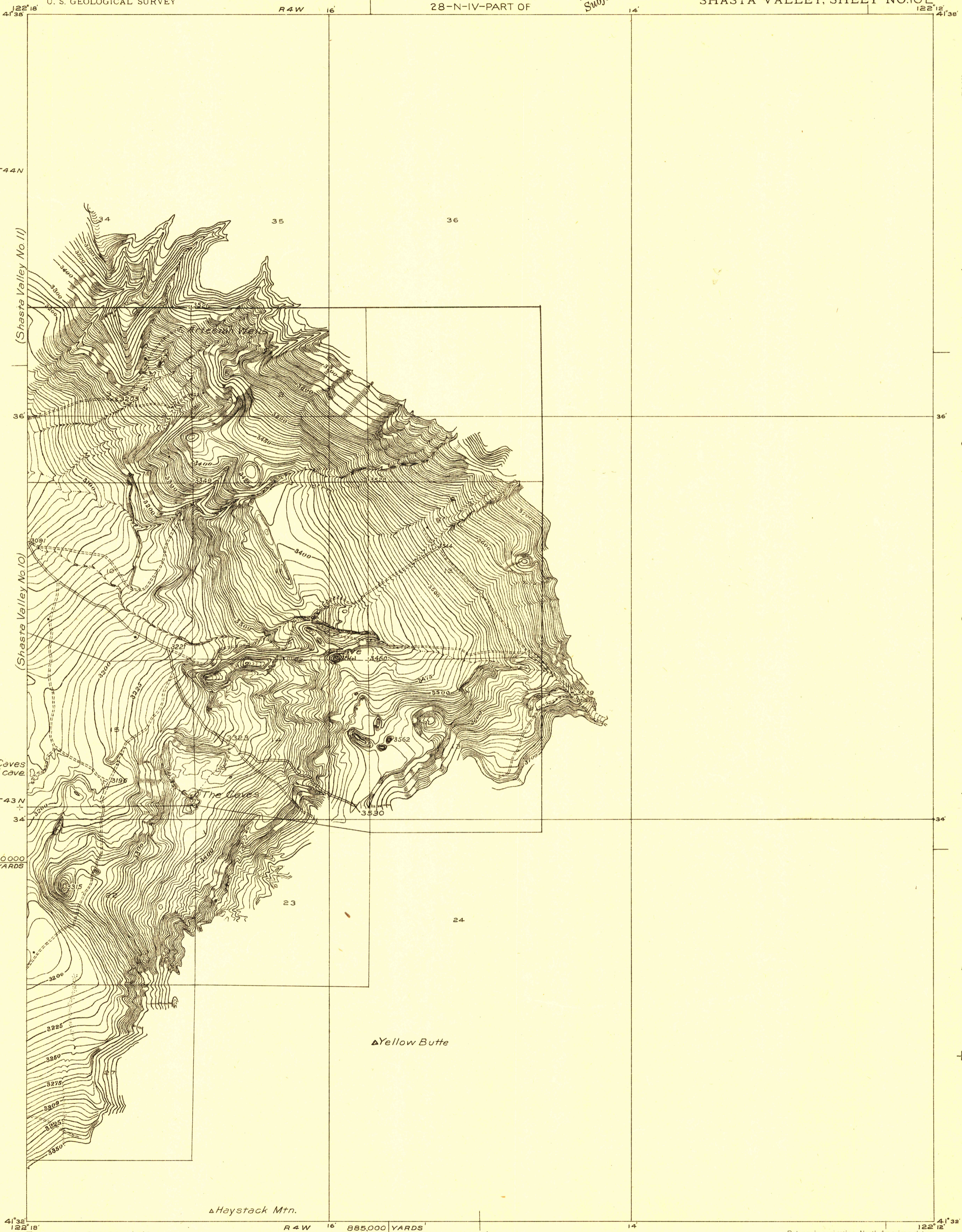
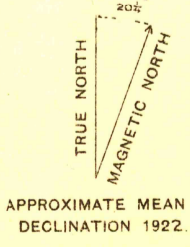
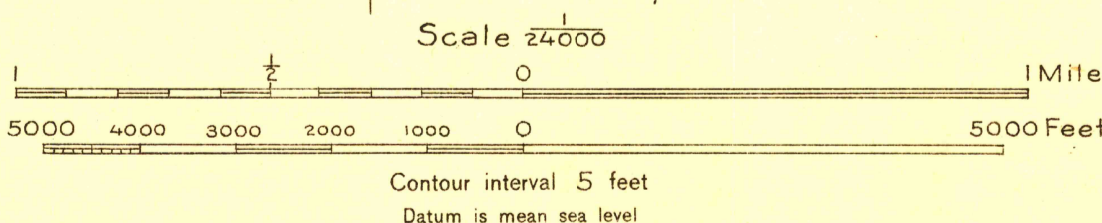


Advance sheet.  
Subject to correction.

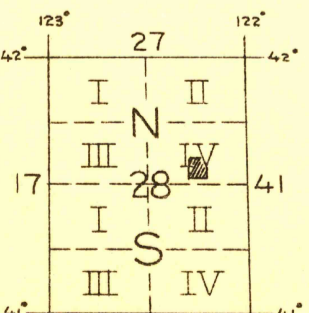


Note:-  
dots at The Caves  
represent direction of cave.

Topography by C. A. Stonesifer  
SURVEYED IN 1922 IN COOPERATION WITH THE U. S. RECLAMATION SERVICE,  
STATE OF CALIFORNIA AND KLAMATH-SHASTA VALLEY IRRIGATION DISTRICT



APPROXIMATE MEAN  
DECLINATION 1922



Polyconic projection, North American datum  
5000 yard grid based upon U. S. zone system, G

337  
996  
12