

Shasta Valley No. 2

DEPARTMENT OF THE INTERIOR  
U. S. GEOLOGICAL SURVEY

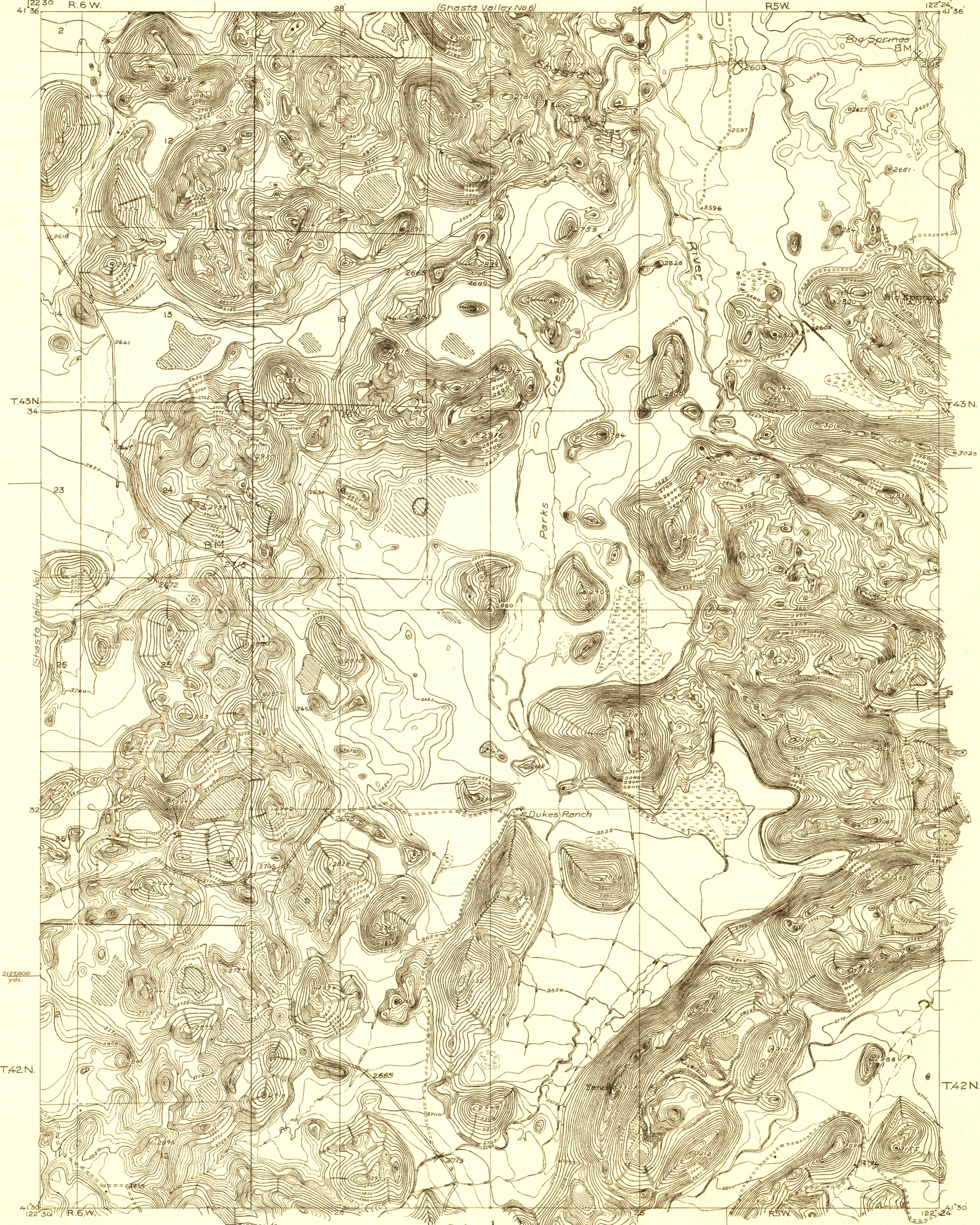
# 28-N-IV-W/2-SW/4 TOPOGRAPHY

(Shasta Valley No. 6)

Advance sheet.  
Subject to correction.

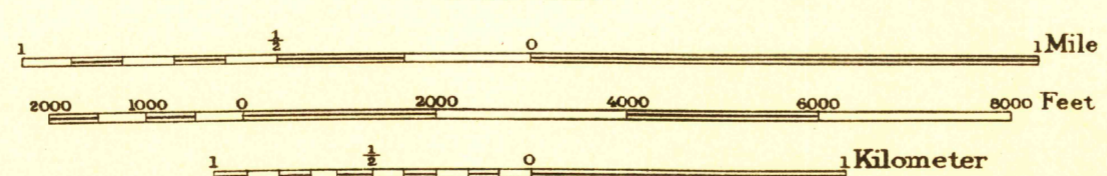
CALIFORNIA  
(SISKIYOU COUNTY)  
SHASTA VALLEY  
SHEET No. 7.

U. S. G. S.  
FILE COPY  
Inspection and Editing.

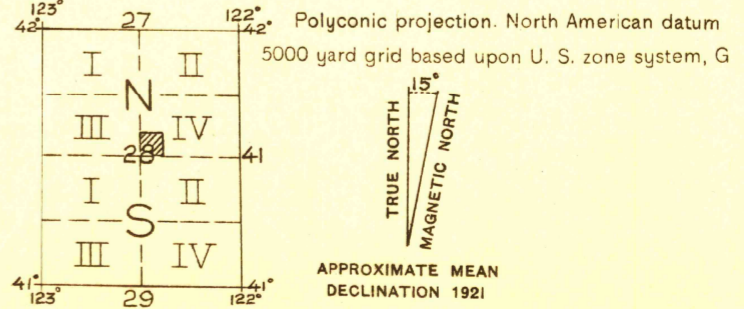


C. H. Birdseye, Chief Topographic Engineer,  
Geo. R. Davis, Division Topographic Engineer,  
Topography by E. P. Davis and L. O. Newsome.  
Control by C. F. Urquhart and C. W. Nessler.

10	5
20	10
30	15
40	20
50	25
60	30
70	35
80	40
90	45
100	50



Contour interval 5 feet  
Datum is mean sea level



SURVEYED IN 1921 IN COOPERATION WITH THE U. S. RECLAMATION SERVICE,  
STATE OF CALIFORNIA AND KLAMATH-SHASTA VALLEY IRRIGATION DISTRICT