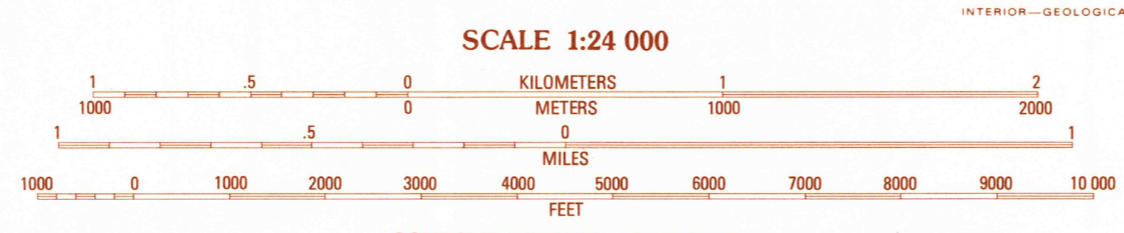


PRODUCED BY THE UNITED STATES GEOLOGICAL SURVEY
CONTROL BY USGS, NOS/NOAA
COMPILED FROM AERIAL PHOTOGRAPHS TAKEN 1979-80
FIELD CHECKED 1981 MAP EDITED 1985
PROJECTION UNIVERSAL TRANSVERSE MERCATOR
BLUE 1000-METER UNIVERSAL TRANSVERSE MERCATOR TICKS, ZONE 11
100000-FOOT STATE GRID TICKS CALIFORNIA, ZONE 5
UTM GRID DECLINATION 0°24' EAST
1980 MAGNETIC NORTH DECLINATION 14°30' EAST
VERTICAL DATUM NATIONAL GEODETIC VERTICAL DATUM OF 1929
HORIZONTAL DATUM NORTH AMERICAN DATUM OF 1927 (NAD 27)
North American Datum of 1983 (NAD 83) is shown by
dashed corner ticks. The values of the shift between NAD
27 and NAD 83 for 7.5-minute intersections are obtainable
from National Geodetic Survey NADCON software.
There may be private inholdings within the boundaries of
any Federal and State reservations shown on this map.
Where omitted, land lines have not been established.

PROVISIONAL MAP
Produced from original
manuscript drawings. Infor-
mation shown as of date of
field check.



CONTROL ELEVATIONS SHOWN TO THE NEAREST 0.1 METER
OTHER ELEVATIONS SHOWN TO THE NEAREST METER
To convert meters to feet multiply by 3.2808
To convert feet to meters multiply by 0.3048

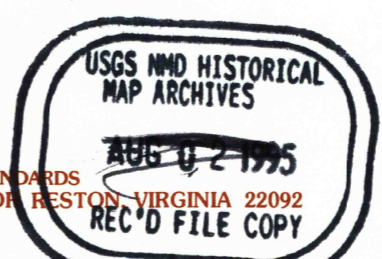


QUADRANGLE LOCATION

1	2	3	1 Old Iron Pass
2	3	4	2 Saddle Peak Hills
3	4	5	3 Dumont Dunes
4	5	6	4 Avamonte Pass
5	6	7	5 Silurian Lake
6	7	8	6 Red Pass Lake N.W.
7	8		7 Red Pass Lake N.E.
8			8 Silurian Valley

CONTOURS AND ELEVATIONS IN METERS
ROAD LEGEND
Improved Road
Unimproved Road
Trail
Interstate Route U.S. Route State Route

SHEEP CREEK SPRING, CA
PROVISIONAL EDITION 1985



ADJOINING 7.5 QUADRANGLE NAMES
28 JUL 1995

35116-E3-TM-024

