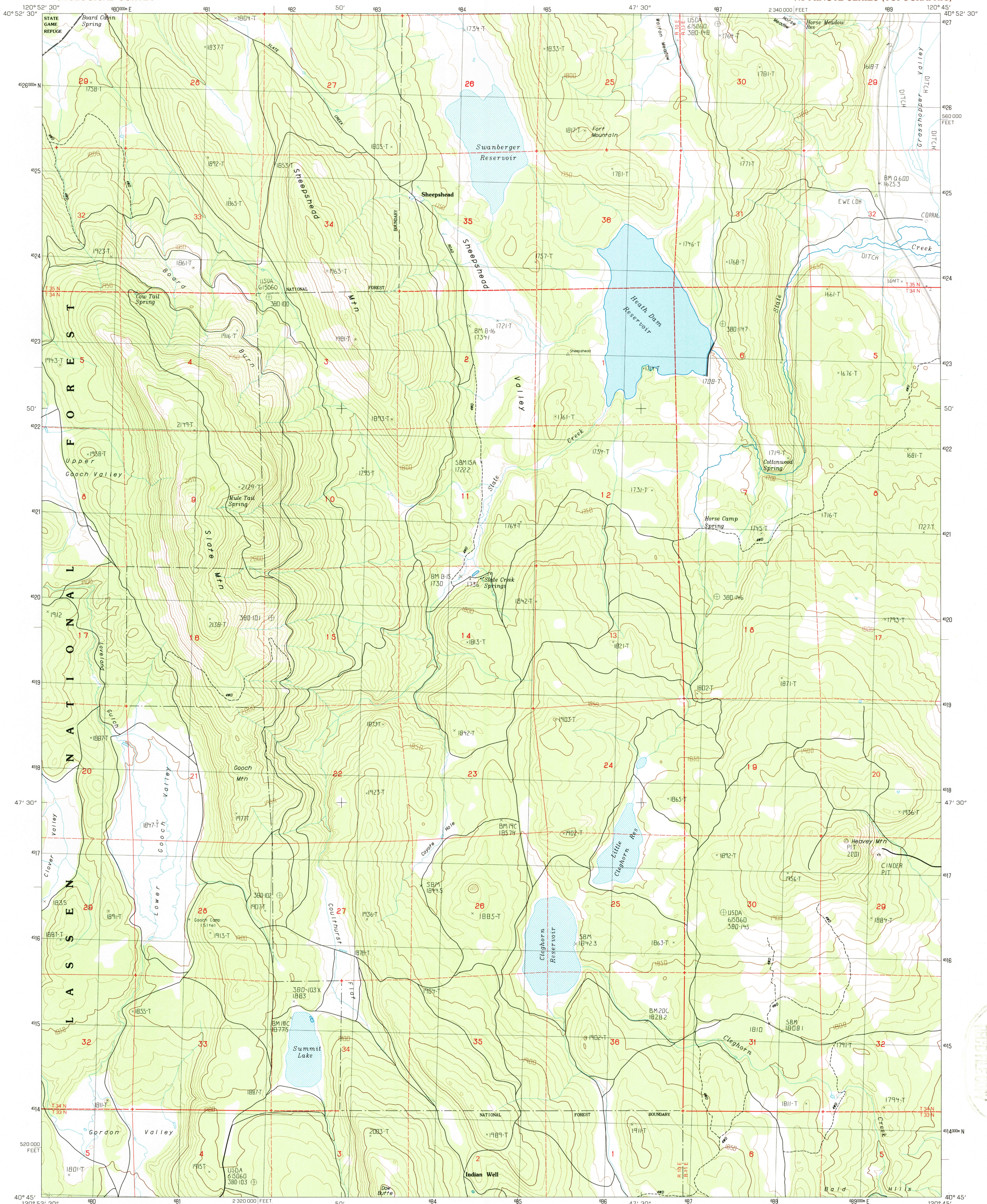


UNITED STATES  
DEPARTMENT OF THE INTERIOR  
GEOLOGICAL SURVEY

SHEEPSHEAD QUADRANGLE  
CALIFORNIA—LASSEN CO.  
7.5 MINUTE SERIES (TOPOGRAPHIC)



FEB 12 1987  
 REPRODUCTION

PRODUCED BY THE UNITED STATES GEOLOGICAL SURVEY  
 CONTROL BY USGS, NOSKOMA & USFS  
 COMPILED FROM AERIAL PHOTOGRAPHS TAKEN 1980  
 FIELD CHECKED 1981, MAP EDITED 1983  
 PROJECTION UNIVERSAL TRANSVERSE MERCATOR  
 GRID: 1000-METER UNIVERSAL TRANSVERSE MERCATOR  
 GRID: 10,000-FOOT STATE GRID TICKS CALIFORNIA, ZONE 10  
 UTM GRID DECLINATION 1790 EAST  
 1980 MAGNETIC NORTH DECLINATION 1730 EAST  
 VERTICAL DATUM: NATIONAL GEODETIC DATUM OF 1929  
 HORIZONTAL DATUM: 1927 NORTH AMERICAN DATUM  
 To place on the predicted North American Datum of 1983,  
 move the projection lines as shown by dashed corner ticks  
 (17 meters north 89 meters east)  
 There may be private inholdings within the boundaries of any  
 Federal and State Reservations shown on this map

**PROVISIONAL MAP**  
 Produced from original  
 manuscript drawings. Informa-  
 tion shown as of date of  
 field check.

