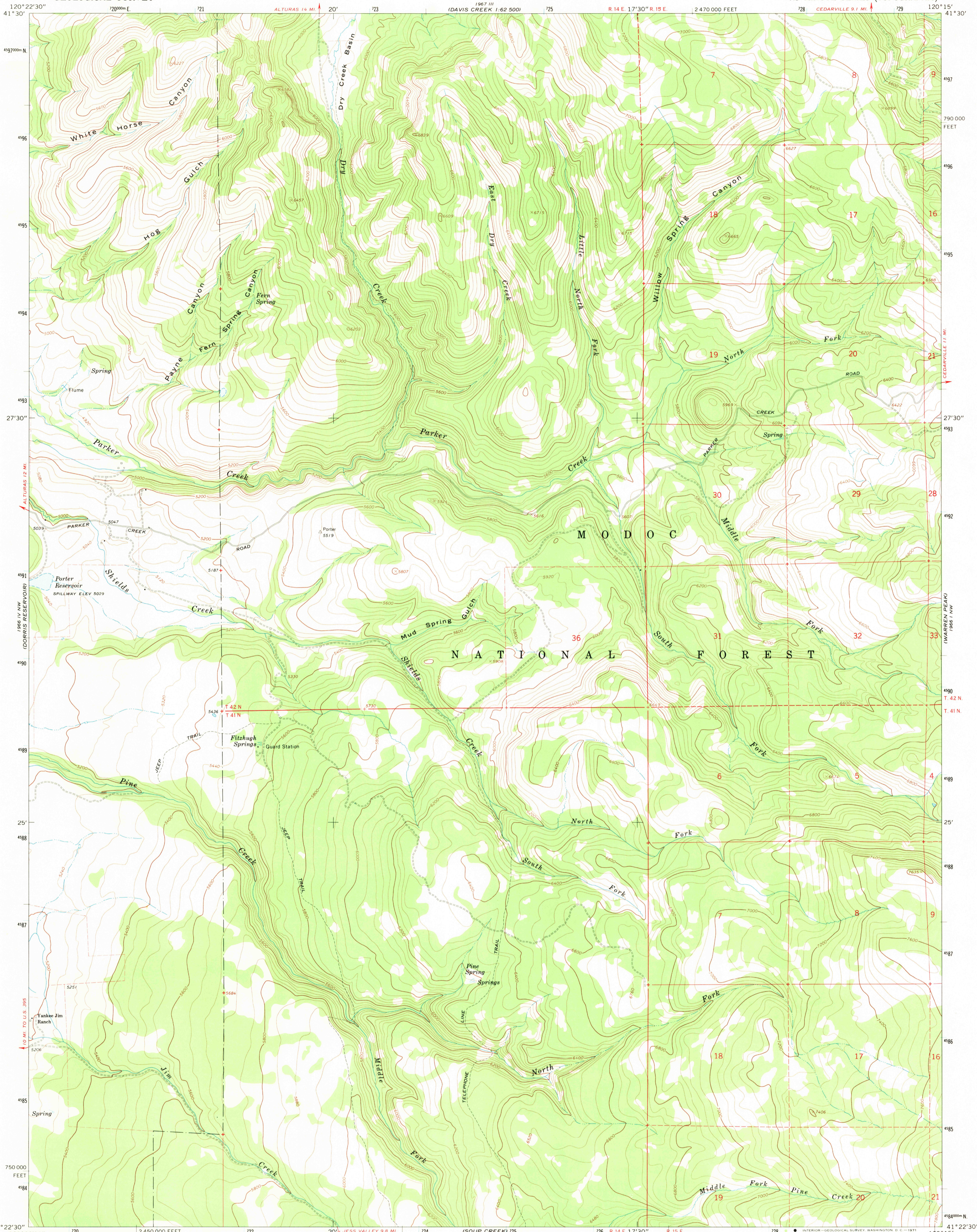
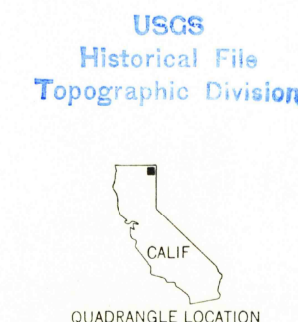
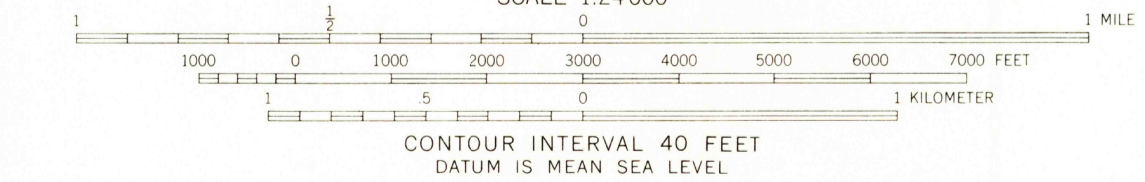
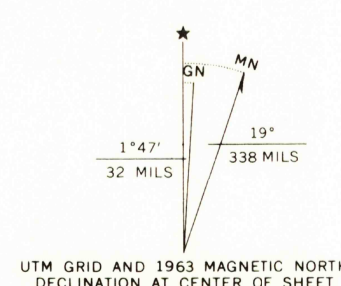


1967 III
CEDARVILLE 1:62,500



Mapped by the U.S. Forest Service
Edited and published by the Geological Survey
Control by USGS, USC&GS, and U.S. Forest Service
Topography by photogrammetric methods from aerial
photographs taken 1955. Field checked by USGS 1963
Polyconic projection. 1927 North American datum
10,000-foot grid based on California coordinate system, zone 1
1000-meter Universal Transverse Mercator grid ticks,
zone 10, shown in blue
Fine red dashed lines indicate selected fence lines
Certain land lines are omitted because of insufficient data



ROAD CLASSIFICATION
Light duty ————— Unimproved dirt

U.S.G.S.
FILE COPY
TOPOGRAPHIC DIVISION

THIS MAP COMPLIES WITH NATIONAL MAP ACCURACY STANDARDS
FOR SALE BY U.S. GEOLOGICAL SURVEY, DENVER, COLORADO 80225, OR WASHINGTON, D. C. 20242
A FOLDER DESCRIBING TOPOGRAPHIC MAPS AND SYMBOLS IS AVAILABLE ON REQUEST

SHIELDS CREEK, CALIF.
N4122.5—W12015.7.5

1963

5230
JAN 2 6 1971

AMS 1966 IV NE—SERIES V895