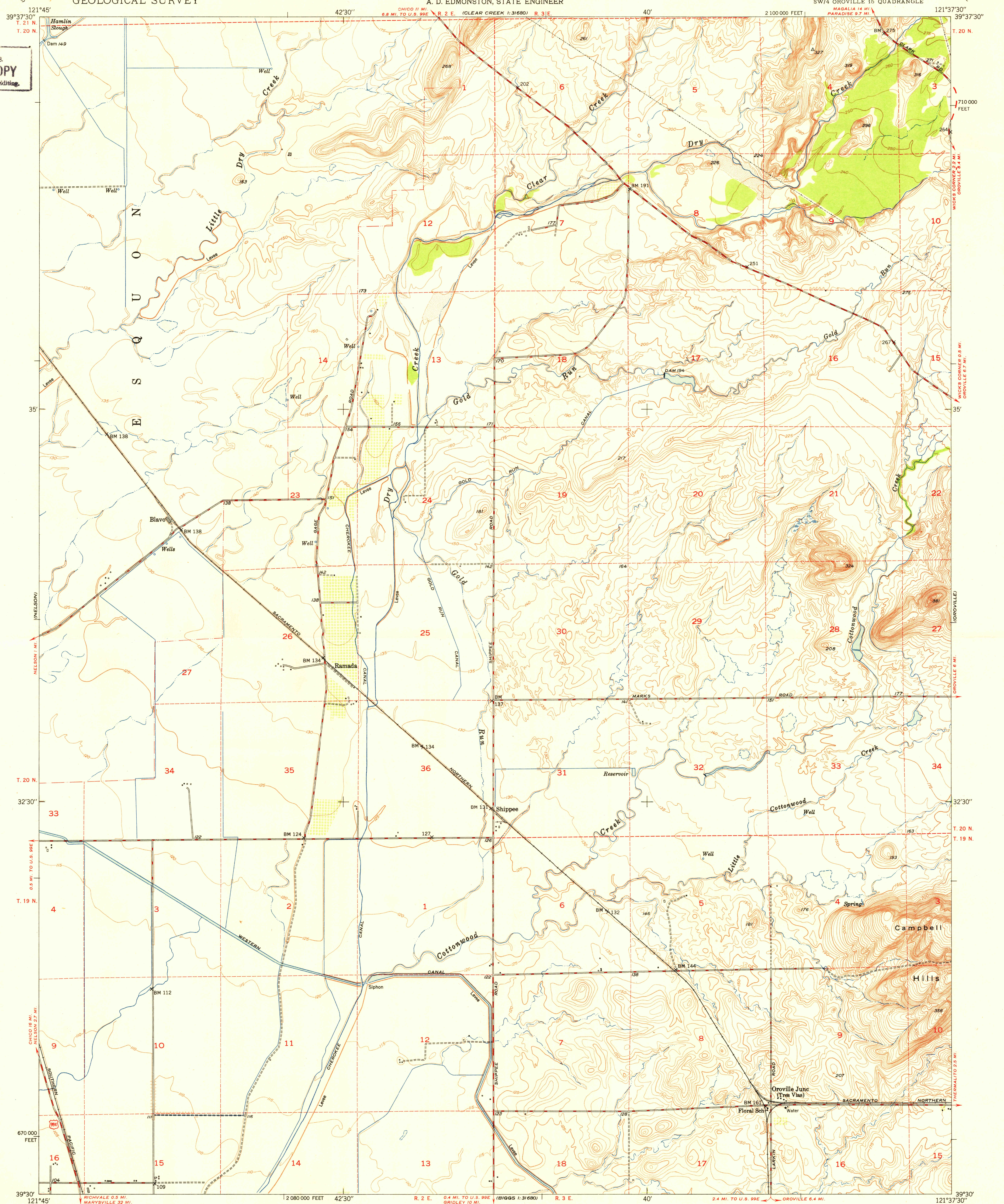
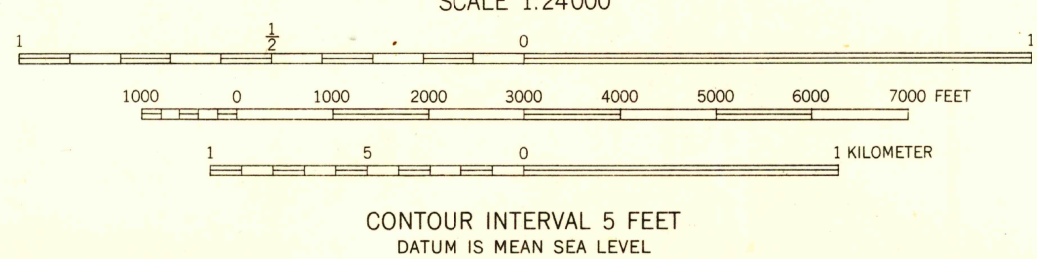
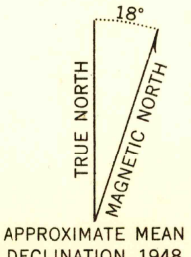


U. S. G. S.
FILE COPY
Inspection and Editing.



Mapped, edited, and published by the Geological Survey
Control by USGS and USC&GS
Culture and drainage by multiplex methods
from aerial photographs taken 1947
Topography by plane-table methods 1948
Polyconic projection. 1927 North American datum
10,000-foot grid based on California coordinate system,
zone 2
Dashed land lines indicate approximate location



CONTOUR INTERVAL 5 FEET
DATUM IS MEAN SEA LEVEL

THIS MAP COMPLIES WITH NATIONAL MAP ACCURACY STANDARDS
FOR SALE BY U. S. GEOLOGICAL SURVEY, FEDERAL CENTER, DENVER, COLORADO OR WASHINGTON 25, D. C.
A FOLDER DESCRIBING TOPOGRAPHIC MAPS AND SYMBOLS IS AVAILABLE ON REQUEST

USGS
Historical File
Topographic Division

U. S. G. S.
FILE COPY
Inspection and Editing.

ROAD CLASSIFICATION
HARD-SURFACE ALL WEATHER ROADS DRY WEATHER ROADS
Heavy-duty 4 LANE Improved dirt
Medium-duty 4 LANE Unimproved dirt
Loose-surface, graded, or narrow hard-surface
U. S. Route State Route

SHIPPEE, CALIF.
SW/4 OROVILLE 15' QUADRANGLE
N3930-W12137.5/7.5

EDITION OF 1950

NAME CHANGED FROM DRY CREEK
(1:31680)

AUG 18 1950 2025