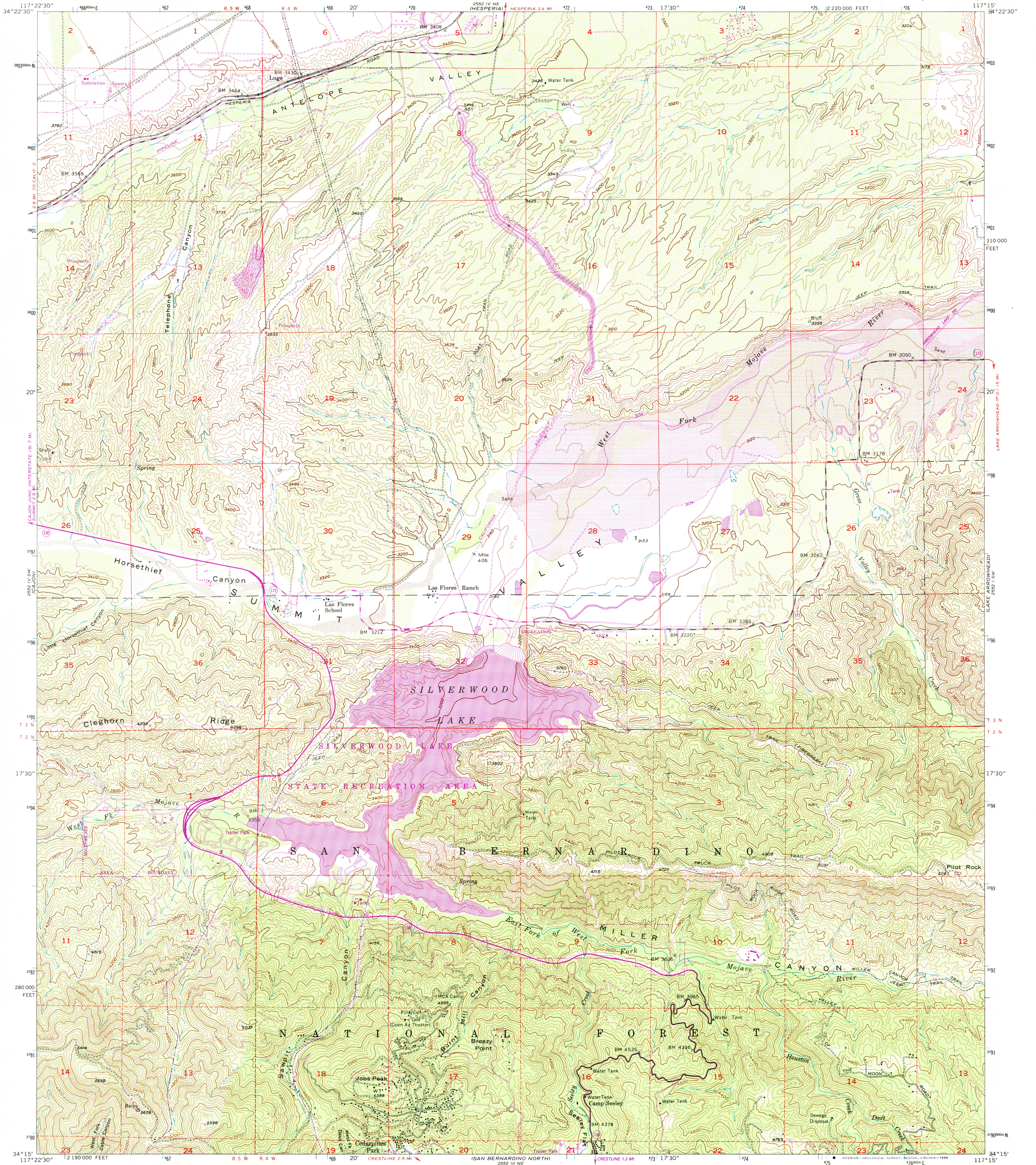


2552 IV NW  
(GALILEO MESA)

UNITED STATES  
DEPARTMENT OF THE INTERIOR  
GEOLOGICAL SURVEY

SILVERWOOD LAKE QUADRANGLE  
CALIFORNIA—SAN BERNARDINO CO.  
7.5 MINUTE SERIES (TOPOGRAPHIC)

APPLE VALE SOUTH  
2552 IV NW



Maped, edited, and published by the Geological Survey  
Control by USGS and NOS/NOAA  
Topography from aerial photographs by photogrammetric methods  
Aerial photographs taken 1952. Field check 1956  
Polyconic projection. 1927 North American Datum  
10,000-foot grid based on California coordinate system, zone 5  
1000-meter Universal Transverse Mercator grid ticks,  
zone 11, shown in blue  
To place on the predicted North American Datum 1983  
move the projection lines 2 meters north and  
83 meters east as shown by dashed corner ticks  
Unchecked elevations are shown in brown  
There may be private inholdings within the boundaries of  
the National or State reservations shown on this map

Revisions shown in purple and woodland compiled from  
aerial photographs taken 1984 and other source data.  
Partial check by U.S. Forest Service. Map edited 1988

SCALE 1:240,000  
1 0 1000 2000 3000 4000 5000 6000 7000 FEET  
1 0 5 10 KILOMETER  
CONTOUR INTERVAL 40 FEET  
NATIONAL GEODETIC VERTICAL DATUM OF 1929  
THIS MAP COMPLIES WITH NATIONAL MAP ACCURACY STANDARDS  
FOR SALE BY U. S. GEOLOGICAL SURVEY, DENVER, COLORADO 80225, OR RESTON, VIRGINIA 22092  
A FOLDER DESCRIBING TOPOGRAPHIC MAPS AND SYMBOLS IS AVAILABLE ON REQUEST

ROAD CLASSIFICATION  
Heavy-duty ——— Light-duty ———  
Medium-duty ——— Unimproved dirt ———  
State Route ○  
USGS NMD HISTORICAL MAP  
MAR 09 1989  
REC'D FILE COPY  
SILVERWOOD LAKE, CALIF.  
(FORMERLY CEDAR SPRINGS)  
34117-C3-TF-024  
1956  
PHOTOREVISED 1988  
DMA 2552 IV SE—SERIES V895