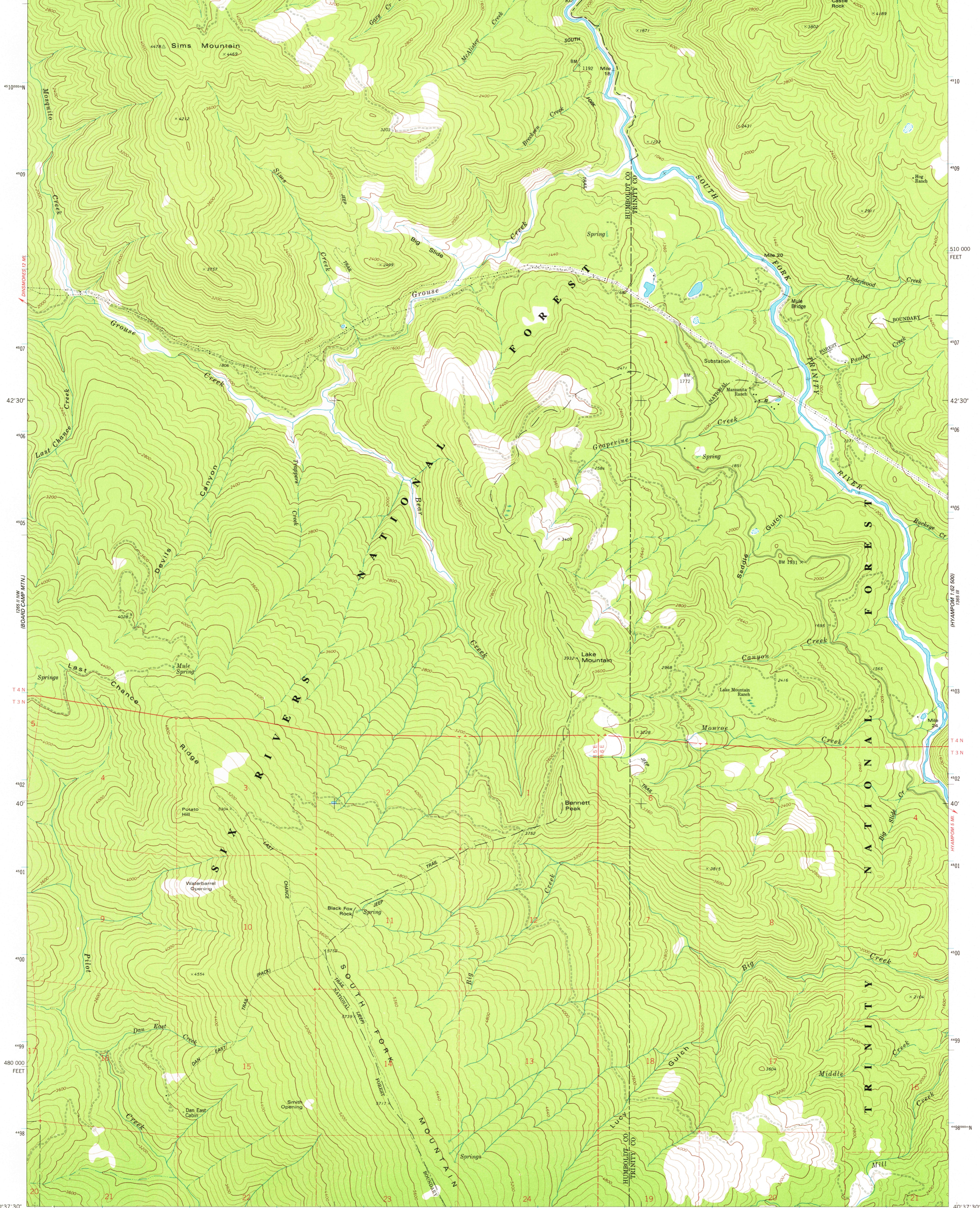
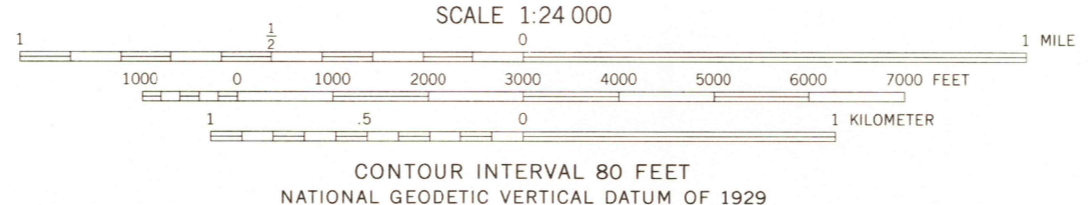
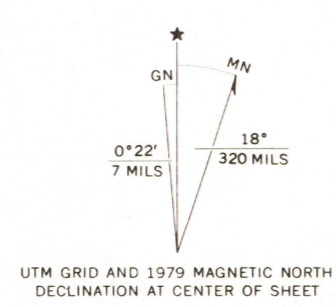




123°37'30" 48°00'00" 49 35' 51' 52' (HENNESSY PEAK) 53' 54' 32'30" 55' 56' 1580 000 FEET 57' 123°30" 40'45"



Mapped, edited, and published by the Geological Survey
Control by USGS, and NOS/NOAA, and U. S. Forest Service
Topography by photogrammetric methods from aerial
photographs taken 1972. Field checked 1973. Map edited 1979
Projection and 10,000-foot grid ticks: California coordinate
system, zone 1 (Lambert conformal conic)
1000-meter Universal Transverse Mercator grid ticks,
zone 10, shown in blue. 1927 North American datum
To place on the predicted North American Datum 1983
move the projection lines 19 meters north and
96 meters east as shown by dashed corner ticks
Certain land lines are omitted because of insufficient data
There may be private inholdings within the boundaries of
the National or State reservations shown on this map



ROAD CLASSIFICATION

Primary highway, hard surface	Light-duty road, hard or improved surface
Secondary highway, hard surface	Unimproved road
Interstate Route	U. S. Route
	State Route

USGS SIMS MOUNTAIN, CALIF.
Historical File NE/4 PILOT CREEK 15' QUADRANGLE
Topographic Division N4037.5-W12330/7.5
1979

FOR SALE BY U. S. GEOLOGICAL SURVEY, DENVER, COLORADO 80225, OR RESTON, VIRGINIA 22092
A FOLDER DESCRIBING TOPOGRAPHIC MAPS AND SYMBOLS IS AVAILABLE ON REQUEST

AUG 11 1980

6200