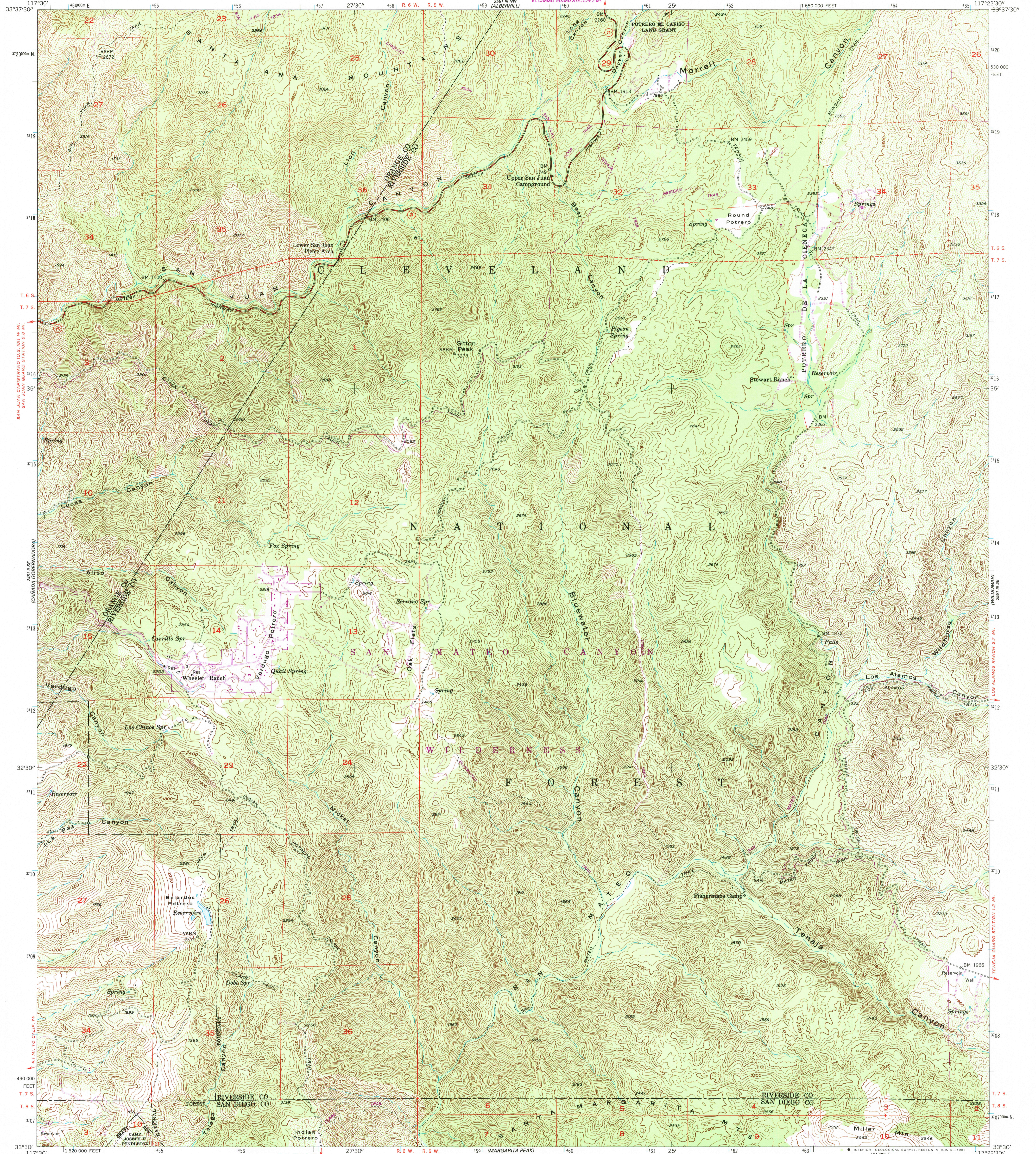


(SAN JUAN CAPSTRANG)

(LAKE ELSINORE)

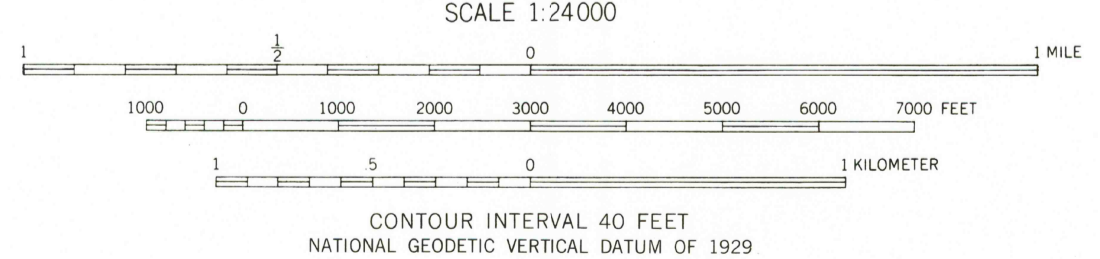
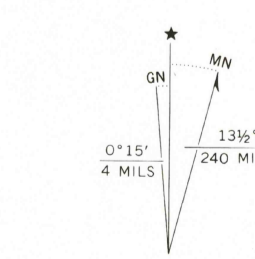
UNITED STATES DEPARTMENT OF THE INTERIOR GEOLOGICAL SURVEY

SITTON PEAK QUADRANGLE CALIFORNIA 7.5 MINUTE SERIES (TOPOGRAPHIC)



Mapped, edited, and published by the Geological Survey... Control by USGS, NOS/NOAA, and USCE... Topography from aerial photographs by multiplex methods... Aerial photographs taken 1948 and 1951. Field checked 1954... Polyconic projection: 1927 North American Datum... 10,000-foot grid ticks based on California coordinate system, zone 6... 1000-meter Universal Transverse Mercator grid ticks, zone 11, shown in blue... Dashed land lines indicate approximate locations... Dotted land lines were established by private survey... To place on the predicted North American Datum 1983 move the projection lines 83 meters east as shown by dashed corner ticks... There may be private inholdings within the boundaries of the National or State reservations shown on this map

Revisions shown in purple compiled from aerial photographs taken 1985 and other source data. Partial field check by U.S. Forest Service. Map edited 1988



THIS MAP COMPLIES WITH NATIONAL MAP ACCURACY STANDARDS FOR SALE BY U. S. GEOLOGICAL SURVEY, DENVER, COLORADO 80225, OR RESTON, VIRGINIA 22092 A FOLDER DESCRIBING TOPOGRAPHIC MAPS AND SYMBOLS IS AVAILABLE ON REQUEST

ROAD CLASSIFICATION: Medium-duty, Light-duty, Unimproved dirt, State Route. Includes a circular stamp: USGS NMD HISTORICAL MAP DEC 9 1988 REC'D FILE COPY. Text: SITTON PEAK, CALIF. 33117-E4-TF-024 1984 PHOTOREVISED 1988 DMA 2551 III SW-SERIES V895

(SAN CLAYMETER)

(FALLBROOK)