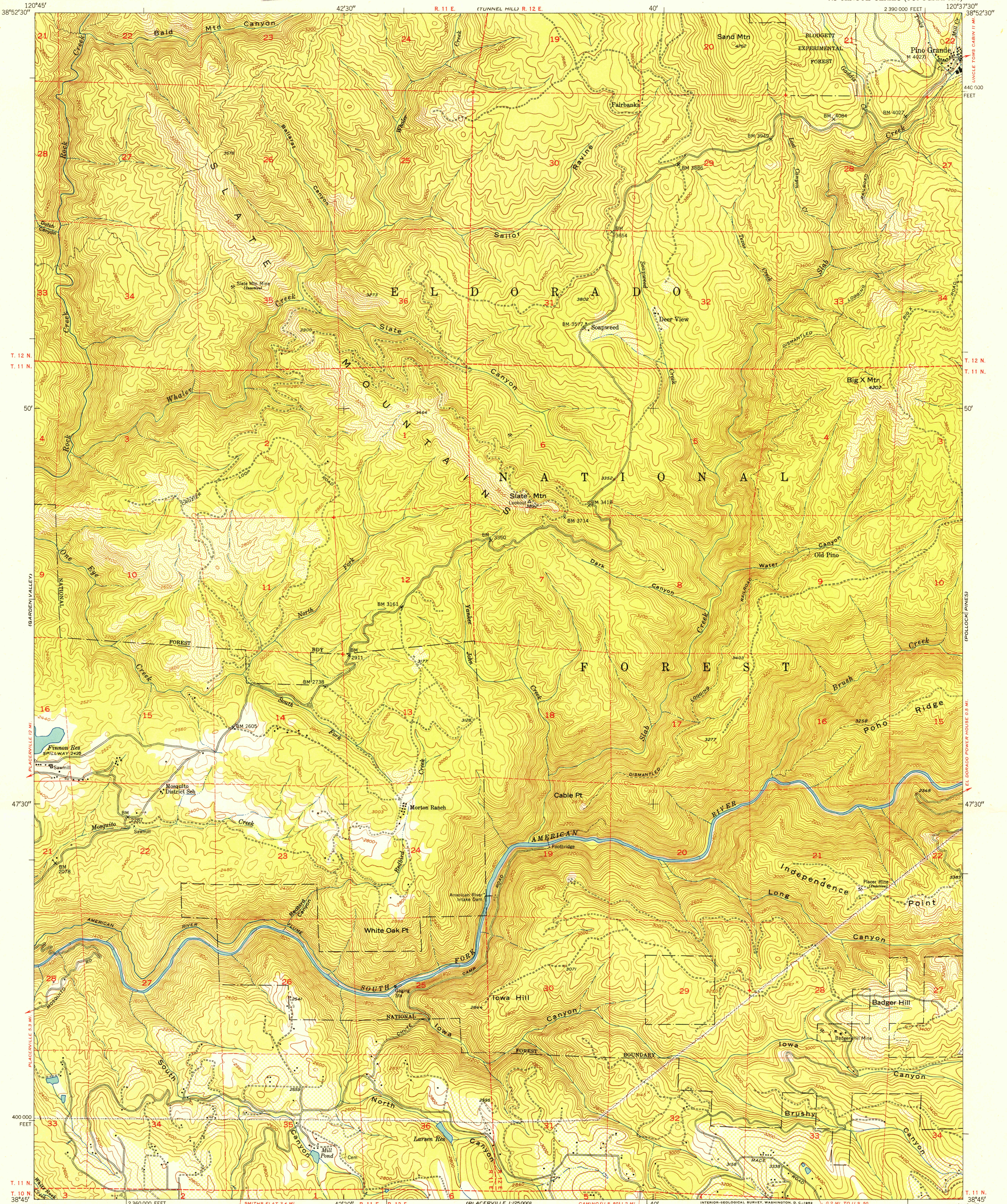
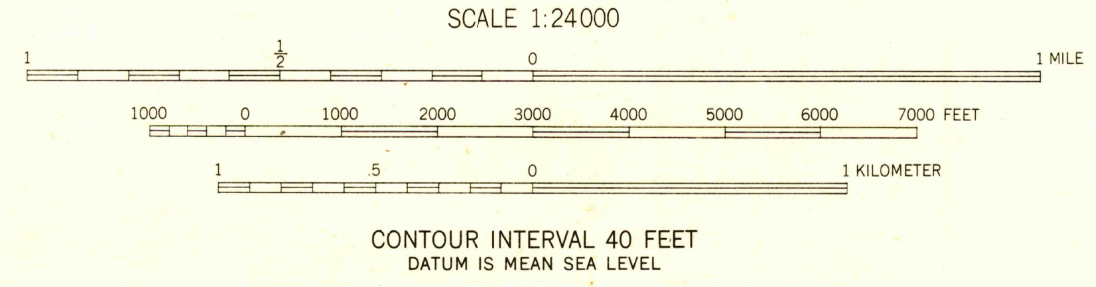
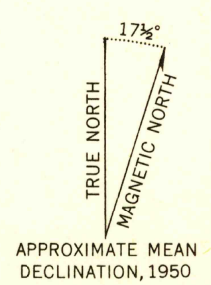


U.S.G.S.  
FILE COPY  
Inspection and Editing



Mapped, edited, and published by the Geological Survey  
Control by USGS and USC&GS  
Topography from aerial photographs by multiplex methods  
Aerial photographs taken 1948. Field check 1950  
Polyconic projection. 1927 North American datum  
10,000-foot grid based on California coordinate system,  
zone 2  
Dashed land lines indicate approximate location  
Unchecked elevations are shown in brown



USGS  
Historical File  
Topographic Division

ROAD CLASSIFICATION

Heavy-duty	4 LANE 16 LANE	Light-duty
Medium-duty	4 LANE 16 LANE	Unimproved dirt
U. S. Route		State Route

U.S.G.S.  
FILE COPY  
Inspection and Editing

THIS MAP COMPLIES WITH NATIONAL MAP ACCURACY STANDARDS  
FOR SALE BY U. S. GEOLOGICAL SURVEY, FEDERAL CENTER, DENVER, COLORADO OR WASHINGTON 25, D. C.  
A FOLDER DESCRIBING TOPOGRAPHIC MAPS AND SYMBOLS IS AVAILABLE ON REQUEST

SLATE MTN., CALIF.  
N 3845-W 12037.5/7.5

1950