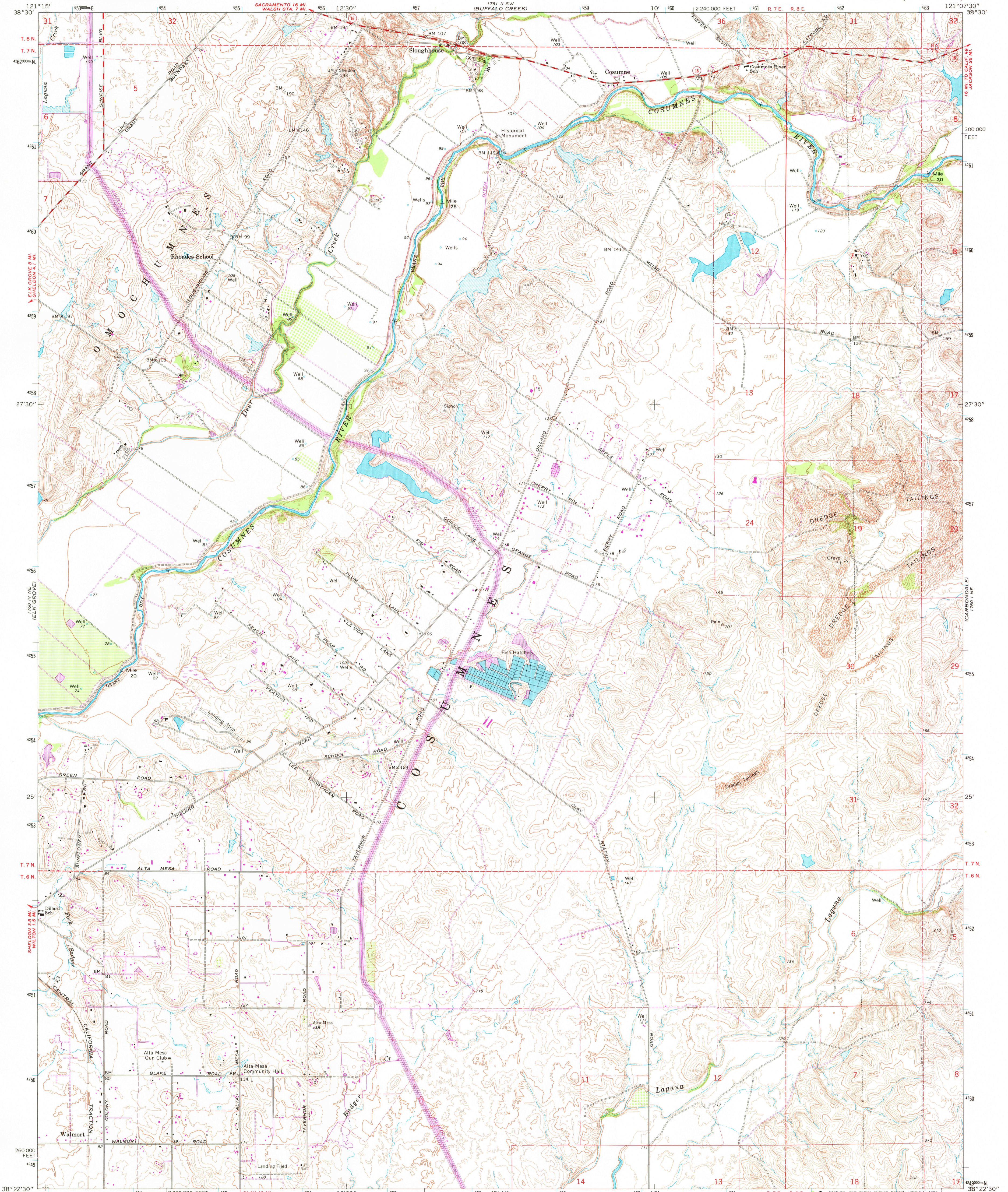
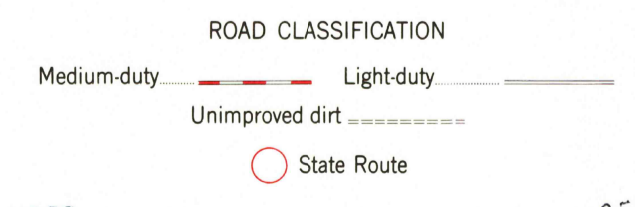
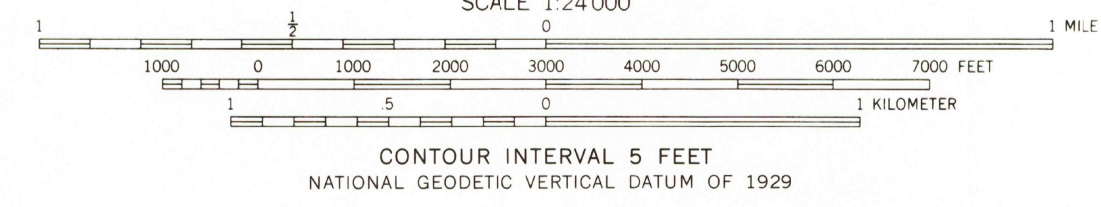
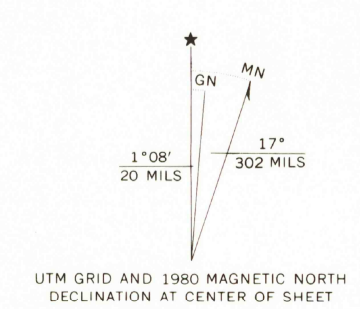


UNITED STATES  
DEPARTMENT OF THE INTERIOR  
GEOLOGICAL SURVEY

SLOUGHHOUSE QUADRANGLE  
CALIFORNIA—SACRAMENTO CO.  
7.5 MINUTE SERIES (TOPOGRAPHIC)



Mapped, edited, and published by the Geological Survey  
Control by USGS and NOS/NOAA  
Topography by photogrammetric methods from aerial  
photographs taken 1966. Field checked 1968  
Supersedes map surveyed 1907, revised 1953  
Polyconic projection: 1927 North American datum  
10,000-foot grid based on California coordinate system, zone 2  
1000-meter Universal Transverse Mercator grid ticks,  
zone 10, shown in blue  
To place on the predicted North American Datum 1983  
move the projection lines 14 meters north and  
92 meters east as shown by dashed corner ticks  
Fine red dashed lines indicate selected fence lines  
Revision shown in purple and woodland compiled by the County of  
Sacramento from aerial photographs taken 1978 and other source data  
This information not field checked. Map edited 1980



USGS  
Historical File  
Topographic Division

SLOUGHHOUSE, CALIF.  
N3822.5—W12107.5/7.5

1968  
PHOTOREVISED 1980  
DMA 1760 1 NW—SERIES V895

SEP - 8 1980

2091

THIS MAP COMPLIES WITH NATIONAL MAP ACCURACY STANDARDS  
FOR SALE BY U.S. GEOLOGICAL SURVEY, DENVER, COLORADO 80225, OR RESTON, VIRGINIA 22092  
A FOLDER DESCRIBING TOPOGRAPHIC MAPS AND SYMBOLS IS AVAILABLE ON REQUEST