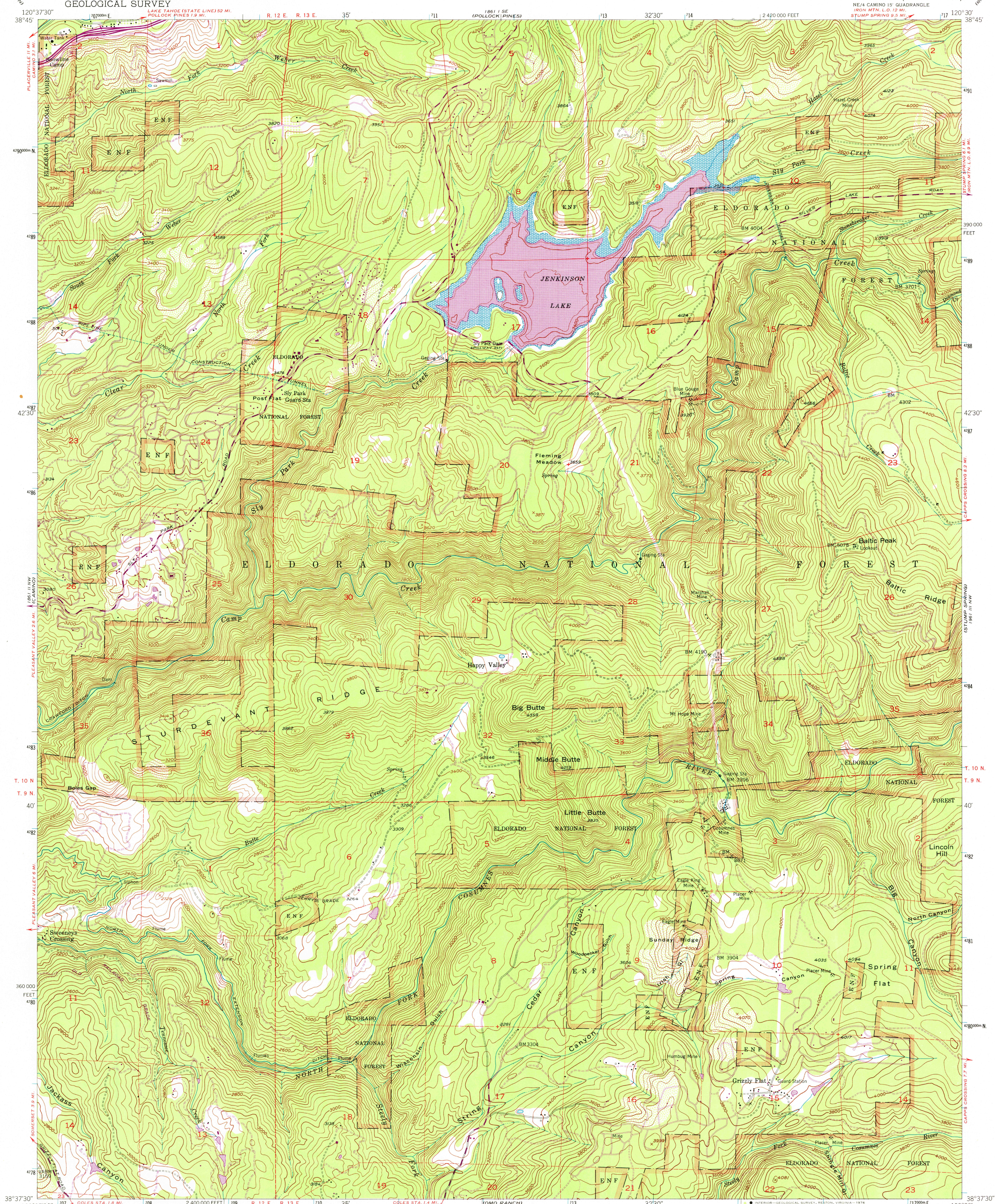


UNITED STATES
DEPARTMENT OF THE INTERIOR
GEOLOGICAL SURVEY

SLY PARK QUADRANGLE
CALIFORNIA—EL DORADO CO.
7.5 MINUTE SERIES (TOPOGRAPHIC)



Mapped, edited, and published by the Geological Survey
Control by USGS and USC&GS

Topography from aerial photographs by multiplex methods
Aerial photographs taken 1948. Field check 1952

Polyconic projection. 1927 North American datum
10,000-foot grid based on California coordinate system, zone 2

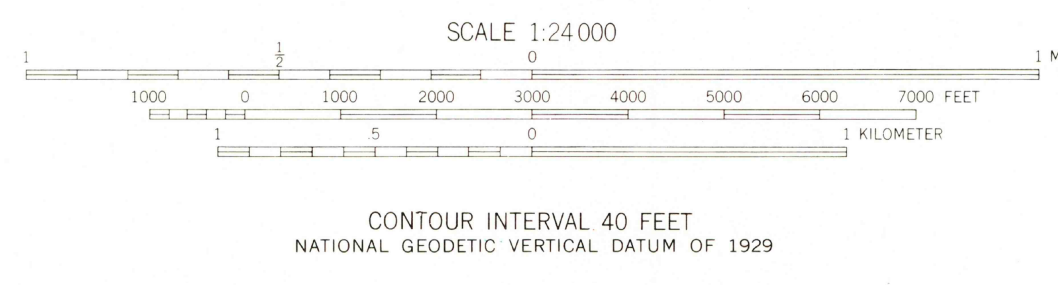
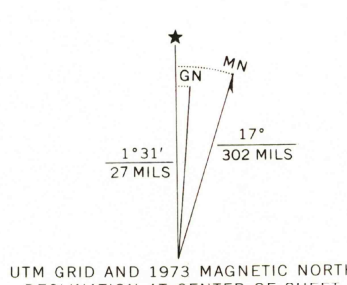
Blue hatching indicates area to be submerged by
completion of Sly Park Dam

Dashed land lines indicate approximate locations

Unchecked elevations are shown in brown

1000-meter Universal Transverse Mercator grid ticks,
zone 10, shown in blue

Revisions shown in purple compiled from aerial photographs
taken 1973. This information not field checked



ROAD CLASSIFICATION
Medium-duty ——— Light-duty ———
Unimproved dirt ———
U.S. Route

THIS MAP COMPLIES WITH NATIONAL MAP ACCURACY STANDARDS
FOR SALE BY U.S. GEOLOGICAL SURVEY, DENVER, COLORADO 80225, OR RESTON, VIRGINIA 22092
A FOLDER DESCRIBING TOPOGRAPHIC MAPS AND SYMBOLS IS AVAILABLE ON REQUEST

USGS
Historical File
Topographic Division

SLY PARK, CALIF.
NE 1/4 CAMINO 15' QUADRANGLE
N3837.5—W12030/7.5
1952
PHOTOREVISED 1973
AMS 1861 II NE—SERIES V895

JUL 22 1976