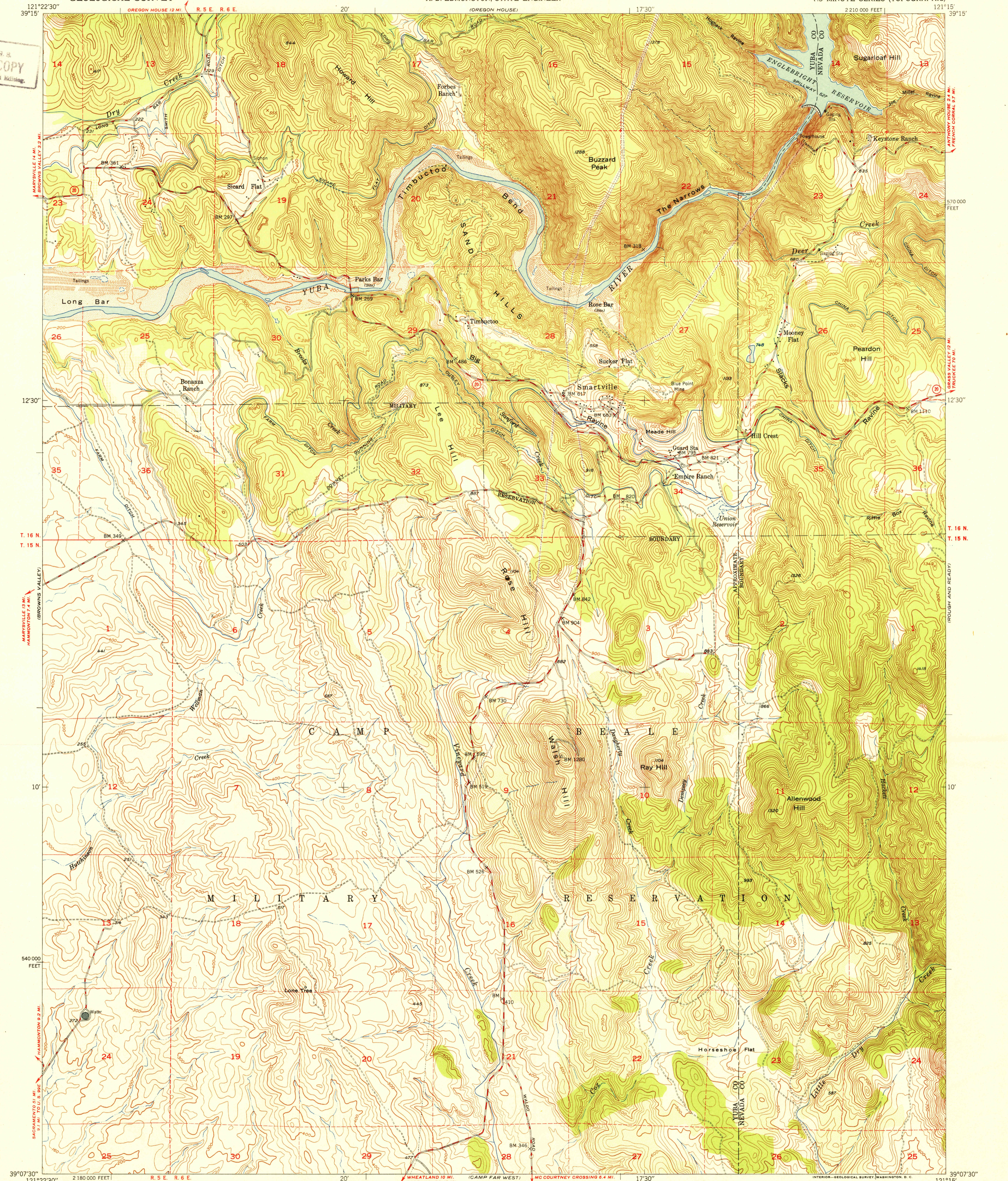
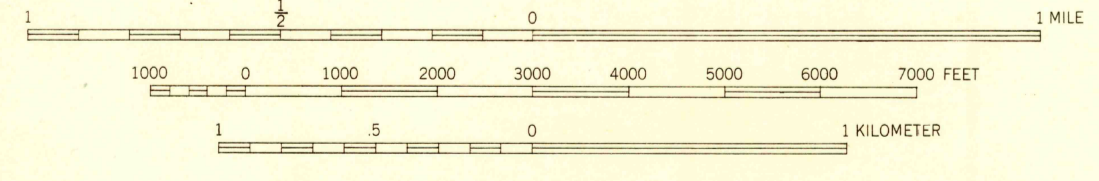
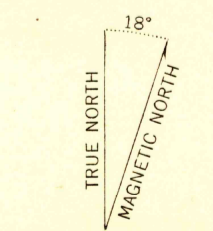


U.S.G.S.
FILE COPY
Inspection and Billing



U.S.G.S.
FILE COPY
Inspection and Billing

Mapped, edited, and published by the Geological Survey
Control by USGS and USC&GS
Topography from aerial photographs by multiplex methods
Aerial photographs taken 1947. Field check 1949
Polyconic projection. 1927 North American datum
10,000-foot grid based on California coordinate system,
zone 2
Dashed land lines indicate approximate location
Unchecked elevations are shown in brown



USGS
Historical File
Topographic Division

ROAD CLASSIFICATION

HARD-SURFACE ALL WEATHER ROADS	DRY WEATHER ROADS
Heavy-duty 4 LANE IS LANE	Improved dirt
Medium-duty 4 LANE IS LANE	Unimproved dirt
Loose-surface, graded, or narrow hard-surface	
U. S. Route	State Route

SMARTVILLE, CALIF.
N3907.5-W12115.75

THIS MAP COMPLIES WITH NATIONAL MAP ACCURACY STANDARDS
FOR SALE BY U. S. GEOLOGICAL SURVEY, FEDERAL CENTER, DENVER, COLORADO OR WASHINGTON 25, D. C.
A FOLDER DESCRIBING TOPOGRAPHIC MAPS AND SYMBOLS IS AVAILABLE ON REQUEST

U.S.G.S.
FILE COPY
Inspection and Billing

EDITION OF 1951
NAME CHANGED FROM
PARKS BAR (1:31680)
JAN 26 1951 3170